



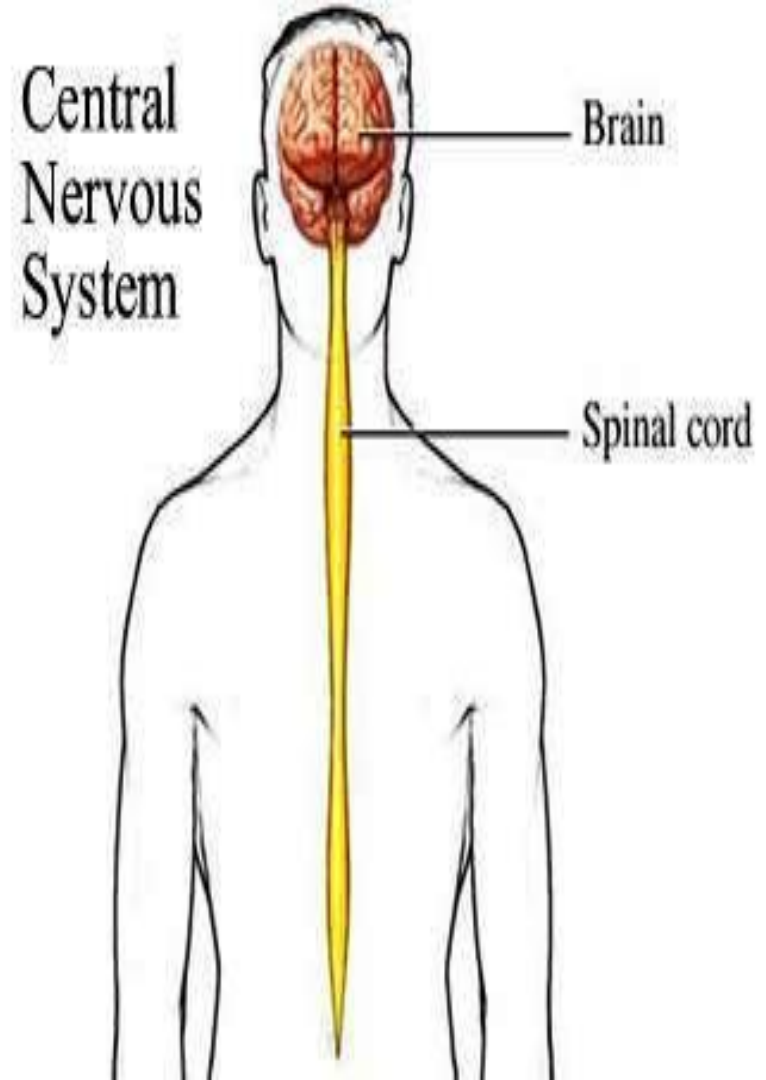
# Central Nervous System

# CNS

CNS consist from 2 part

1- Brain

2- Spinal cord



# CNS

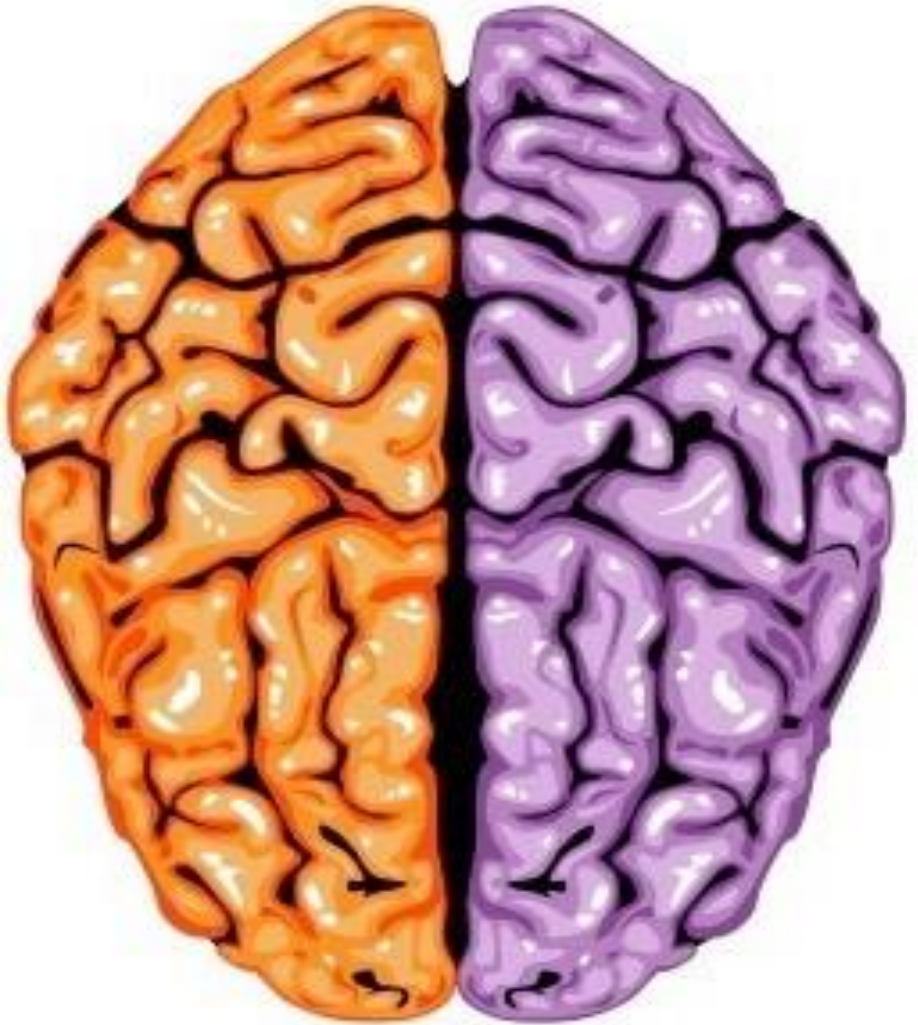
**Brain**

**2 hemisphere**

**Right & left**

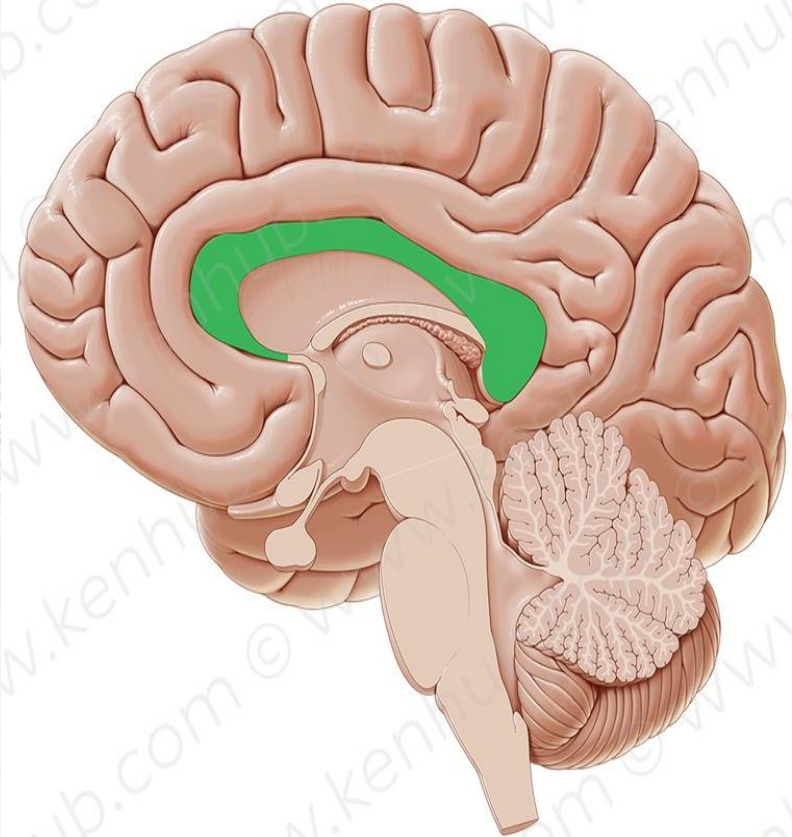
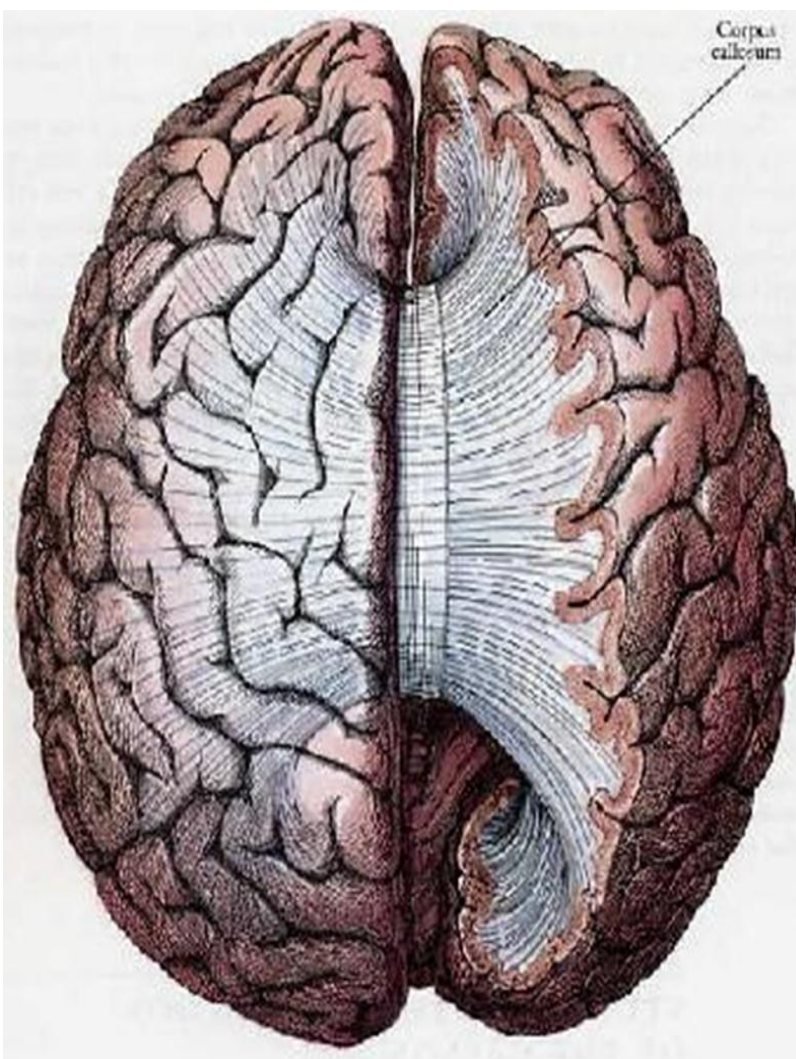
**Connected by**

**Corpus callosum**





# CNS Brain



# CNS

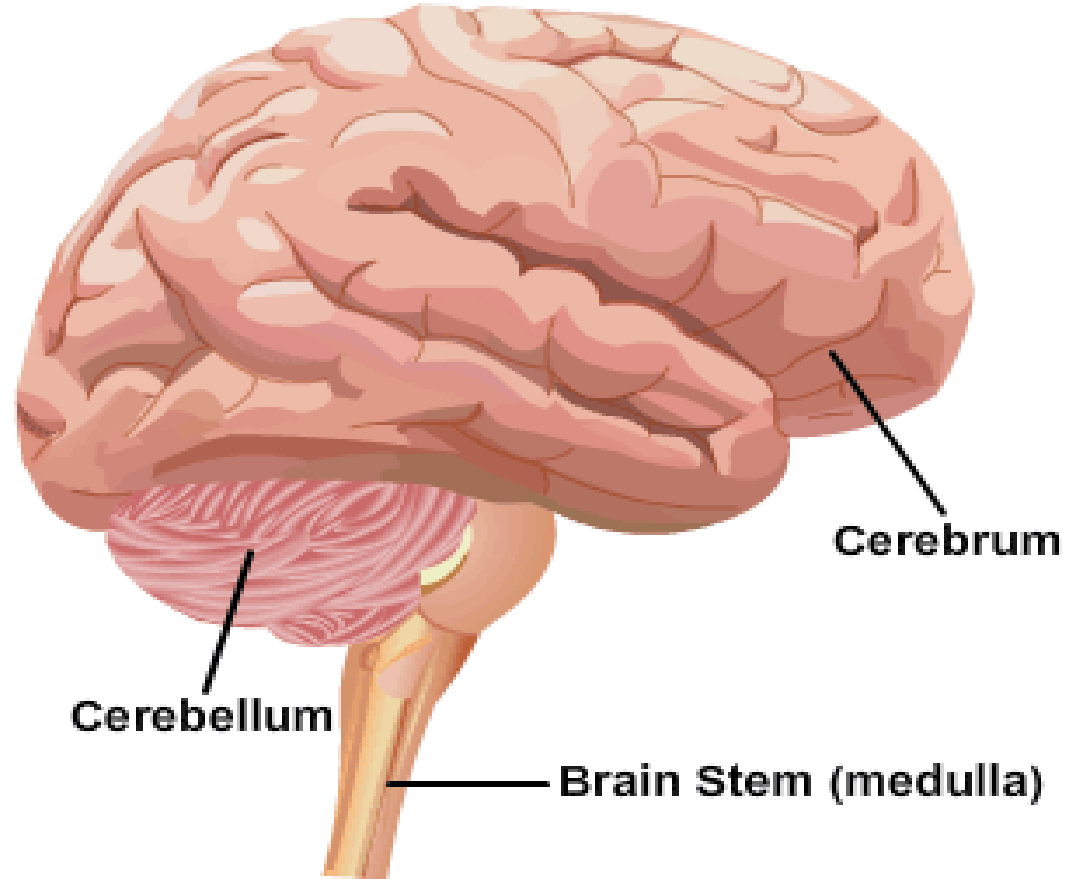
## Brain

1- cerebrum

2- cerebellum

3- brain stem

## Parts of the Brain



# CNS

## Cerebrum

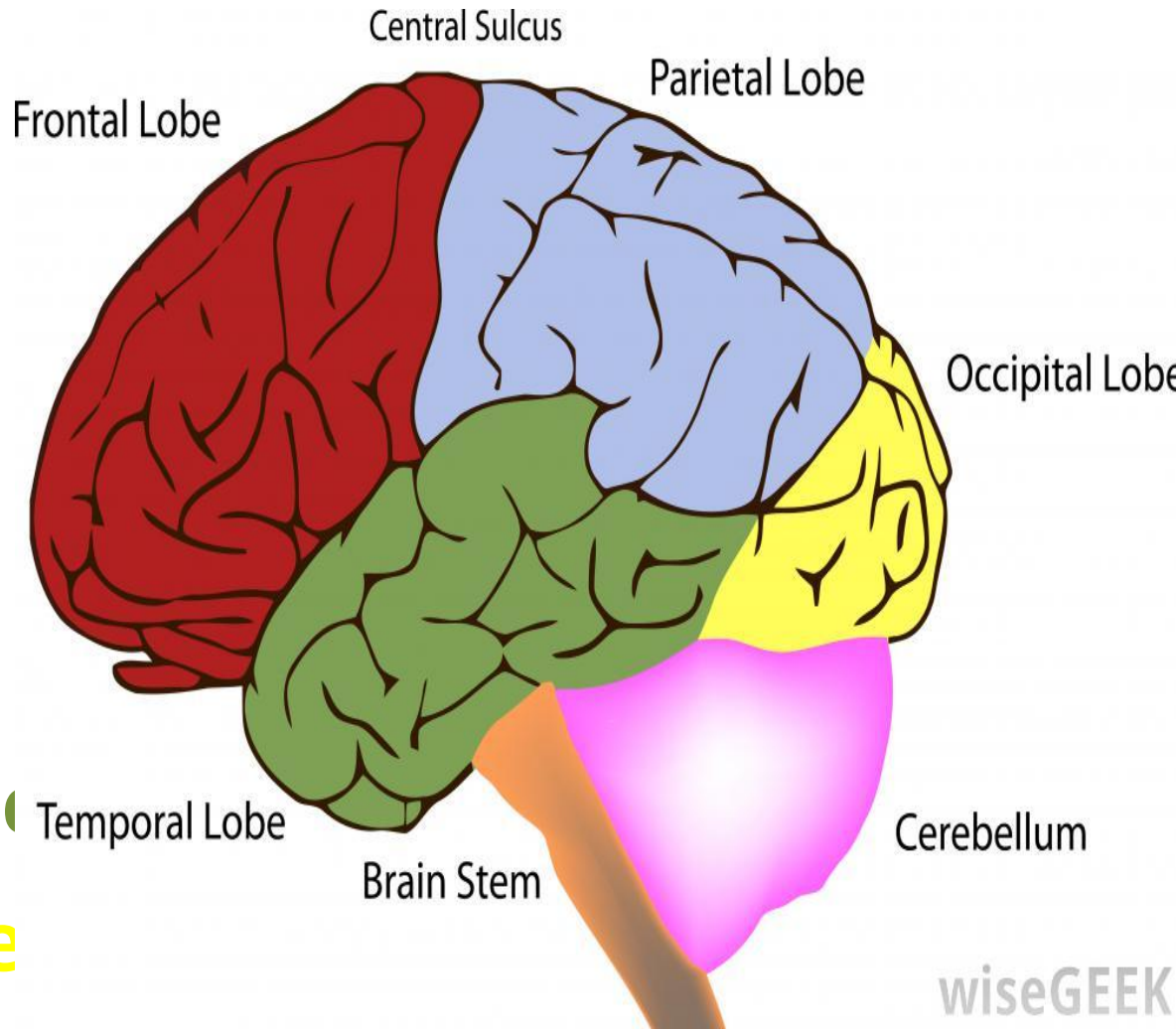
4 lobes

1- Frontal lobe

2- Parietal lobe

3- Temporal lobe

4- Occipital lobe



# CNS

Cerebrum

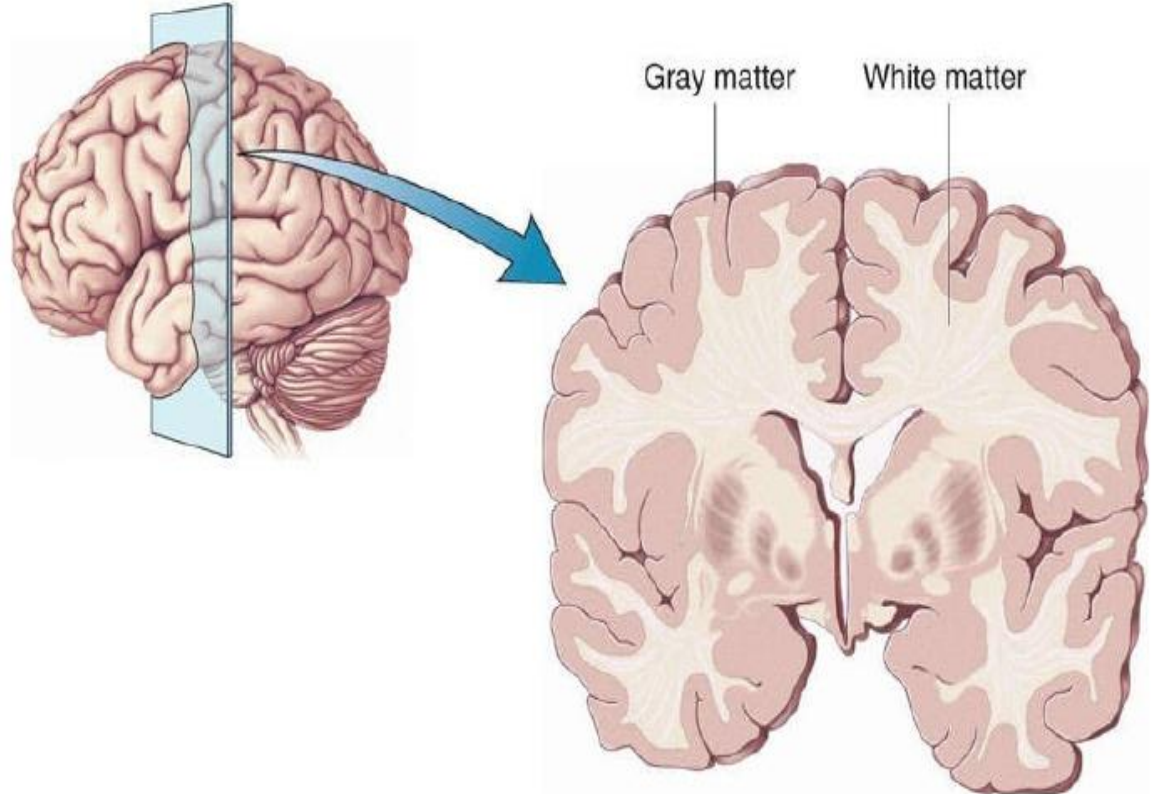
Outer layer :

**Gray matter**

Inner layer :

**White matter**

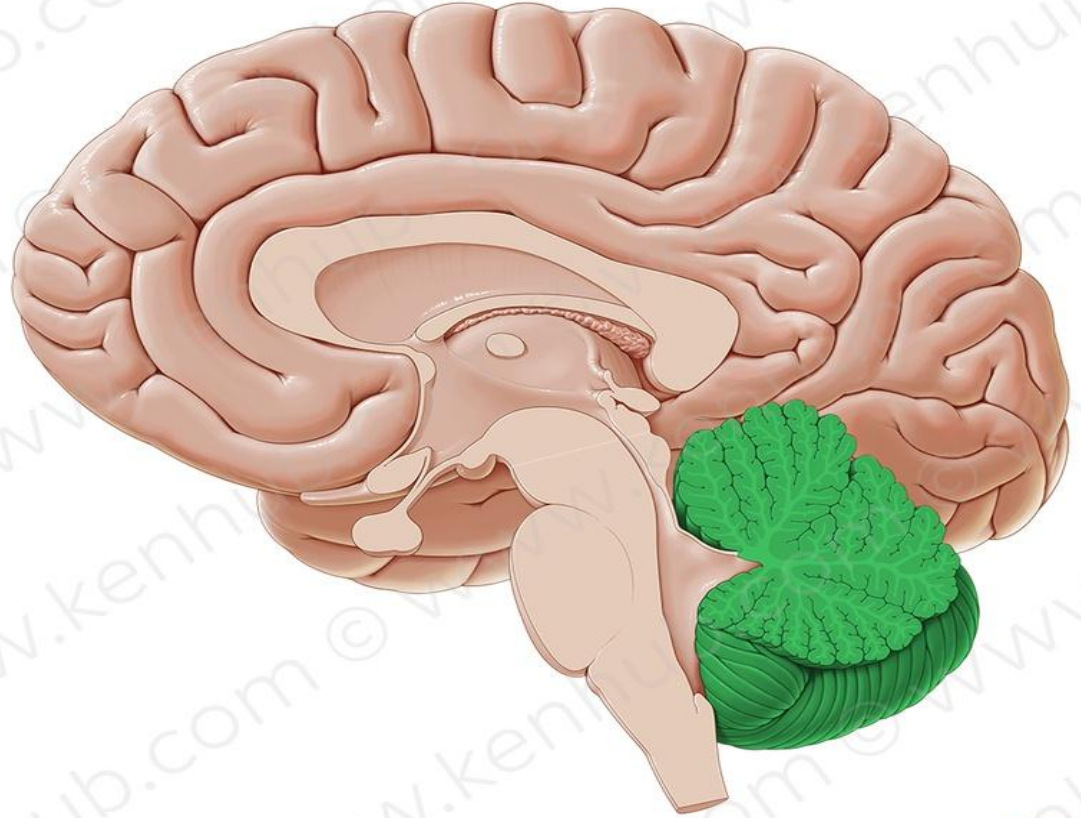
## Cortex and medulla





**CNS**

**Cerebellum**





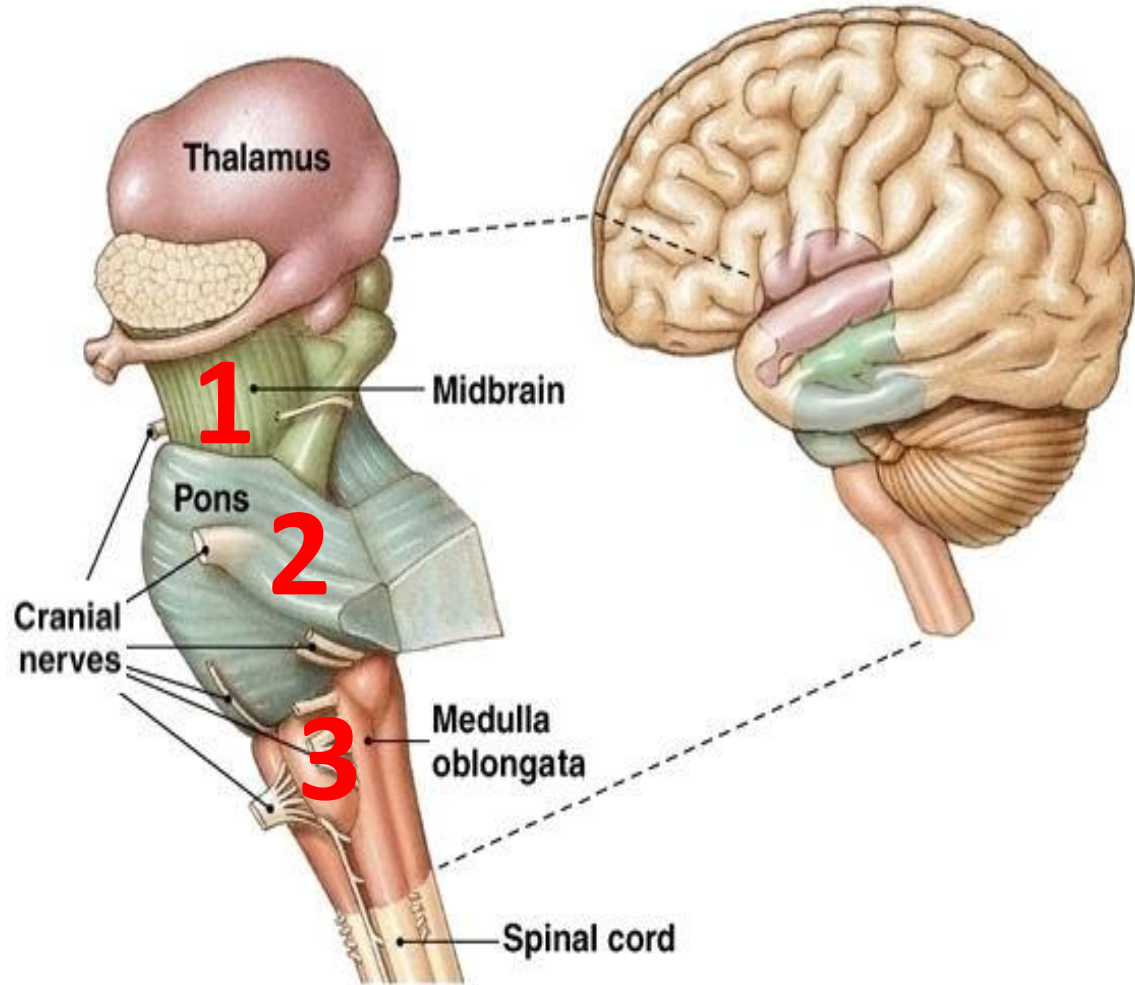
# CNS

## Brain stem

1-Mid brain

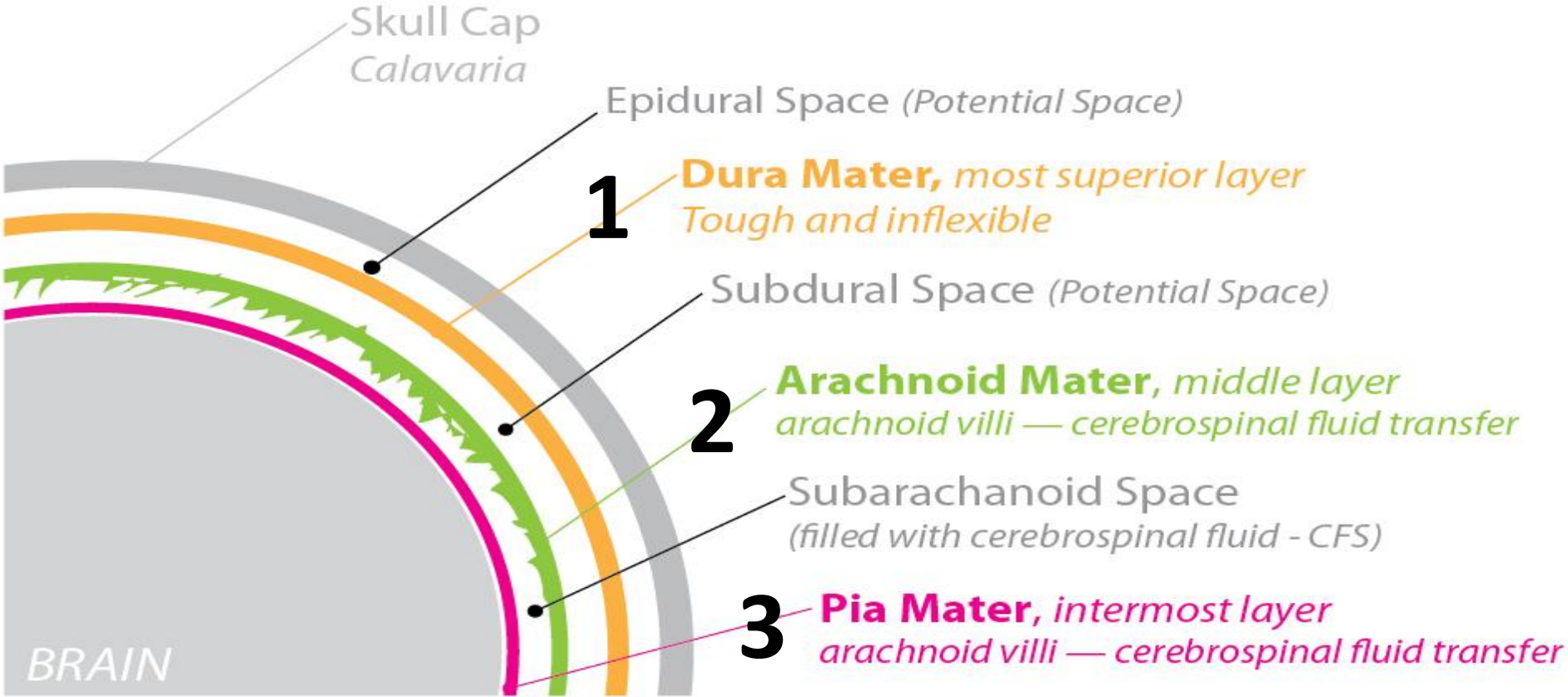
2-Pons

3-Medulla oblongata



# CNS

# Meninges



# CNS

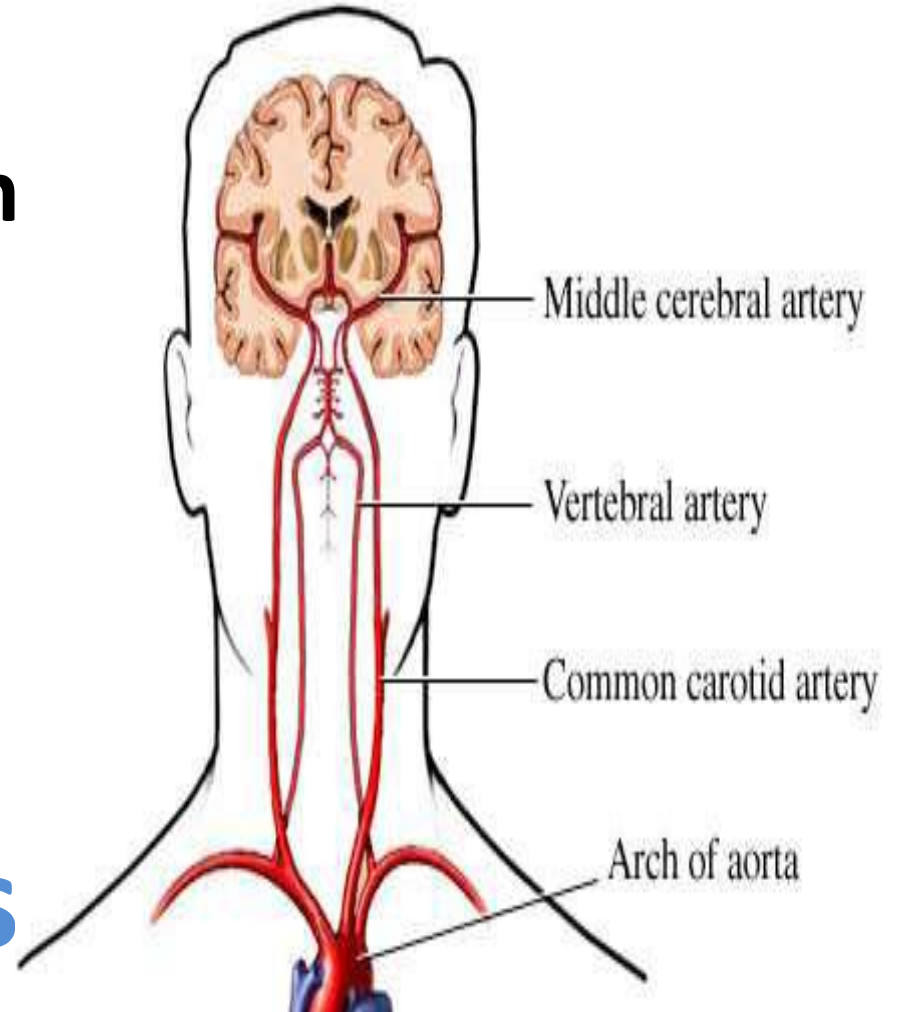
## Blood supply of brain

1-Cerebral artery

2-Vertebral artery

3-Common carotid artery

## Circle of Willis



**CNS**

# Brain ventricles

## Ventricles of the Brain

