

Stomach.

Fundic region

1-mucosa

a-epithelium simple columnar epithelium

b-lamina propria contain gastric gland which consist of chief cell and parietal cell.

c- muscularis mucosa consist of two layers

2-sub mucosa .wide layer of c.t

3-muscularis externa consist of three layers.

4-serosa consist of mesothelium

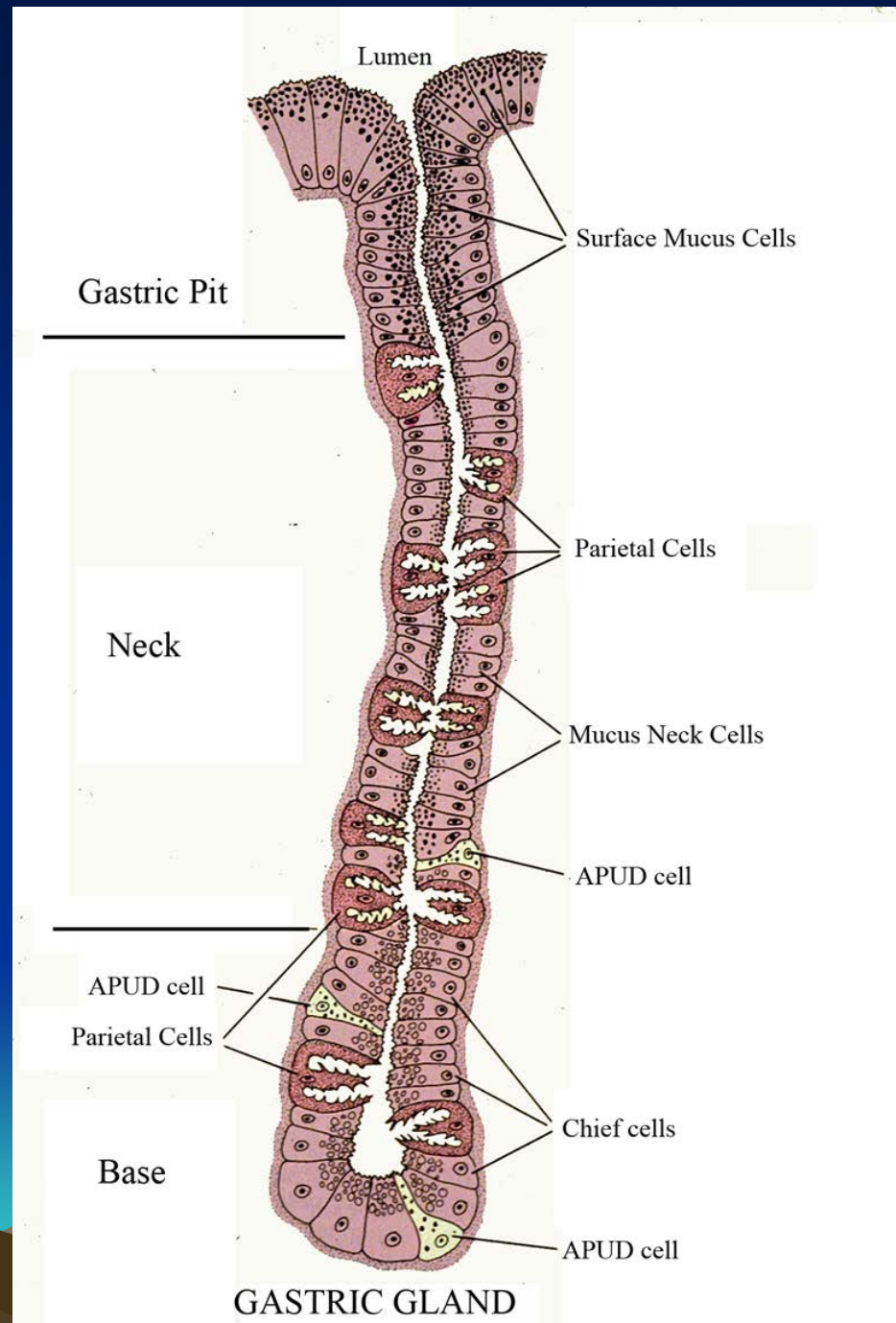
Pyloric region

Similar to fundic region except gastric glands are deeper than fundic region.

-
-
-
-
-
-
-
-
-
-

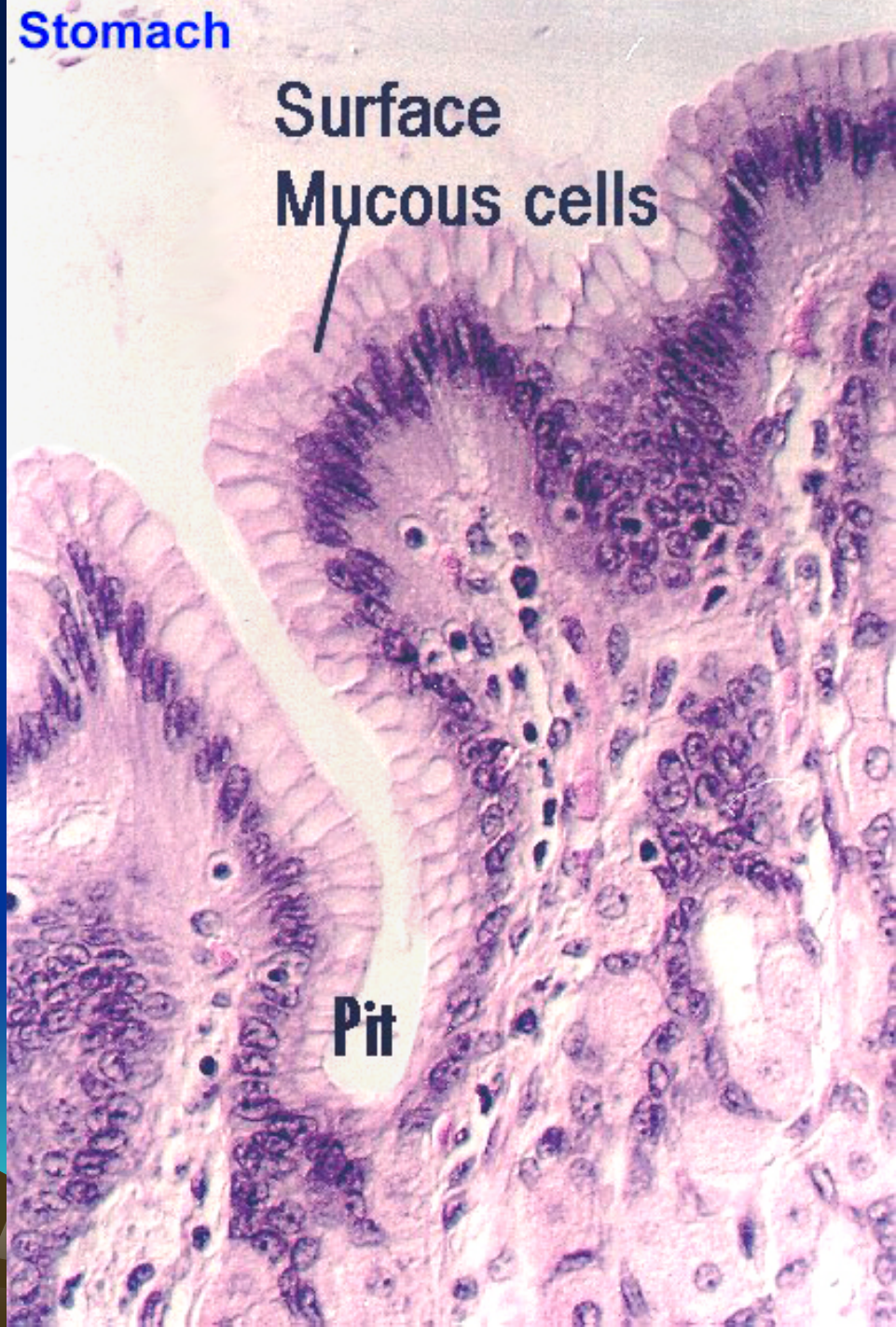


Diagram of a Fundic Gastric Gland



Fundic Stomach with a short pit

Surface mucus secreting epithelium



Fundic Stomach



Short Pits
(F)

Long
Glands

MM –
muscularis
mucosa
(interna);

SM –
submucosa

SM

MM

Pyloric Stomach

Long pits (P)

Short Glands

MM – muscularis
mucosa (interna)

