

Esophagus

Consist of four layers

1-mucosa

a-epithelium is st.sq.non-keratenized

b-lamina propria consist of thin layer of c.t..

c-muscularis mucosa consist of one layer of smooth muscle(longitudinal)

2-submucosa ,wide region of c.t and esophagus gland (mucous).

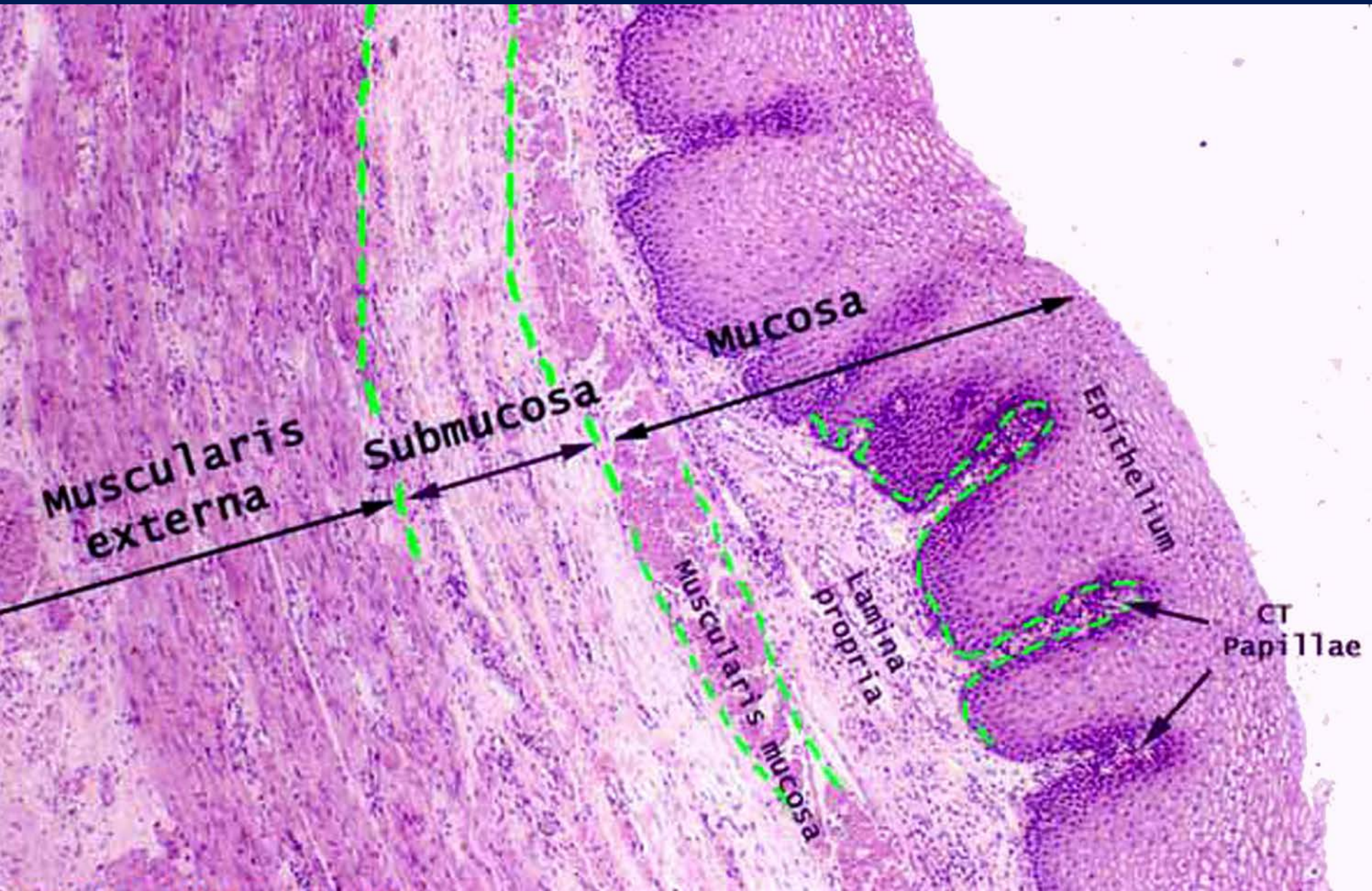
3-muscularis externa consist of inner layer circular and outer layer longitudinal of smooth muscle.

4-adventitia ,loose c.t ,nerve and blood vessels

Low mag – Cross section through the Esophagus



Wall of the Esophagus



Esophagus

Esophageal
Mucus gland
(arrow)

