

# Tongue

Dorsal half

Mucosa ;st.sq.kera.

Thin lamina propria.

**Papillae;** its folds from mucosa.

**1-filiform papillae;** found on cornified tips.

2-fungiform papillae; diffuse between  
filiform has taste bud.

Masses of skeletal muscle occupy the  
anterior of the tongue and there are fibro  
elastic coat and gland,c.t and b.v.

# Ventral half

Mucosa; st, sq, non kera (lingual gland).

**Val late(circumvallates)papillae.** •

Situated in the surface of the tongue in front of root. Covered with st, sq. taste buds in both sulcus(furrows). •

Von Ebners(serous) alveoli.open to the sulcus. •



# Salivary gland (parotid gland )

Its serous gland with capsule and septa. •

1-intercalated duct small in size and lumen lined with cuboidal cell . •

2-intralobular duct is large and lumen lined with columnar cell. •

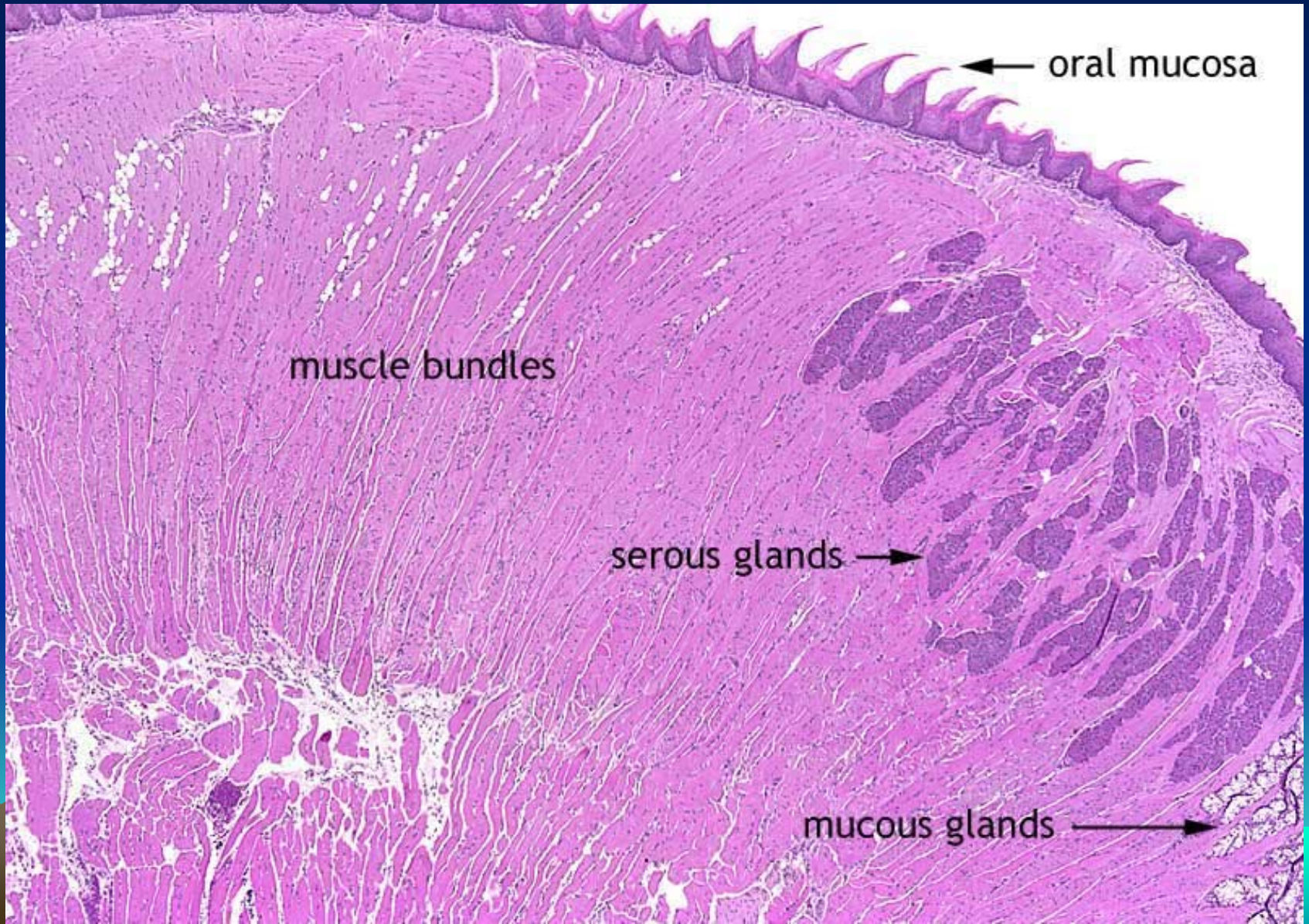
3-interlobular duct lumen is wide and lined with pseudo stratified columnar epithelium. •

4-main excretory duct . •





# The Tongue at low mag





# Vallate Papillae





# Taste Bud

