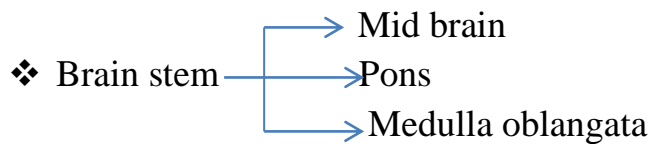
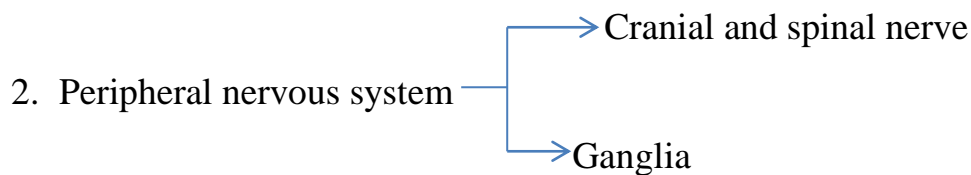
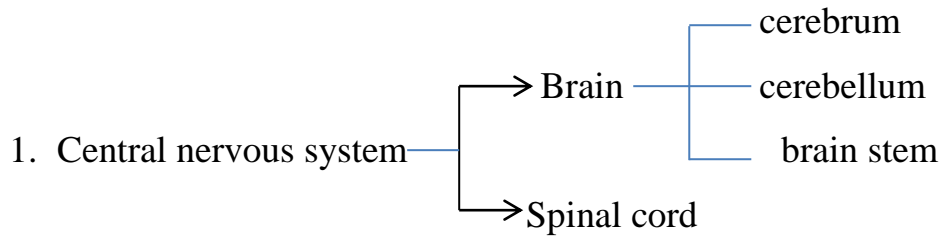
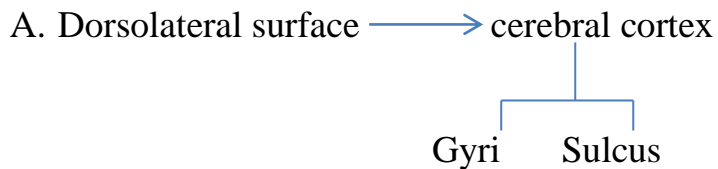


Nervous system

The nervous system consist of two main parts :



❖ Cerebrum.



-Longitudinal and transverse fissure.

B. Medial surface.-

1) Corpus collusum.

2) Mid brain

3) Ventricle :

-Lateral ventricle(First and Second ventricle).

-Third ventricle.

-Fourth ventricle.

Nervous system

C. Ventral surface.

- Olfactory bulb.
- Olfactory nerve.
- Optic tract.
- Optic nerve.
- Optic chiasma.
- Mammillary body.
- Cerebral peduncles.
- Inter peduncular fossa.

❖ Brain stem

- pons.
- medulla oblongata.
 - 1) Corpus trapezoideum.
 - 2) Pyramid.

❖ Cerebellum

- The surface of cerebellum divided by fissures into lobes, and smaller fissures subdivided into smaller lobules and these into smaller unit known as folia.

▪ The brain divided into five parts based on development.

- 1) Rhombencephalon(hind brain).
 - myelencephalon, medulla oblongata.
 - metencephalon, pons and cerebellum.
- 2) Mesencephalon(mid brain)

Nervous system

3) Prosencephalon (fore brain)

- diencephalon involve thalamus ,hypothalamus, pineal body.
- telencephalon involve the lateral ventricle, cerebral cortex, corpus callosum and olfactory bulb .

❖ spinal cord

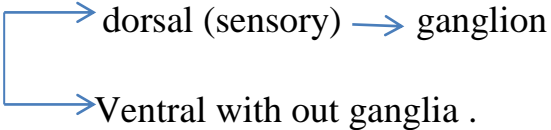
-flattened dorsoventrally tube.

-cervical enlargement.

-lumbosacral enlargement.

-conus medullaris.

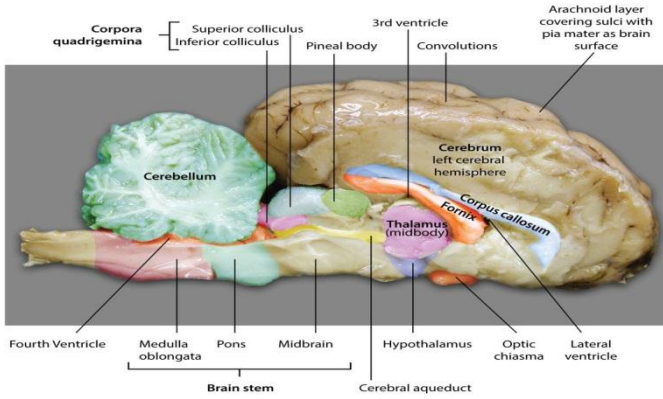
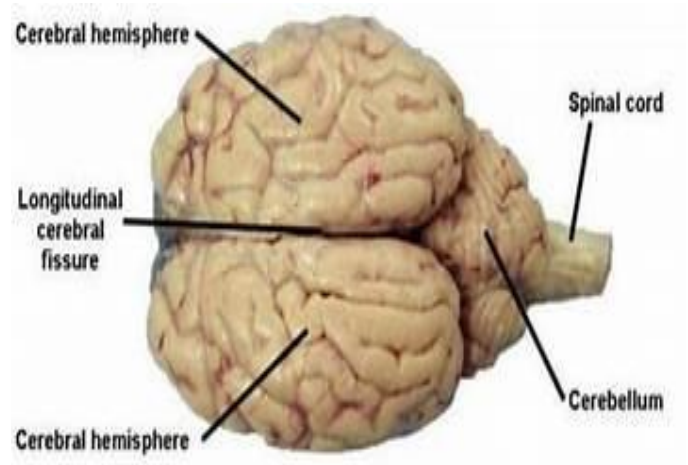
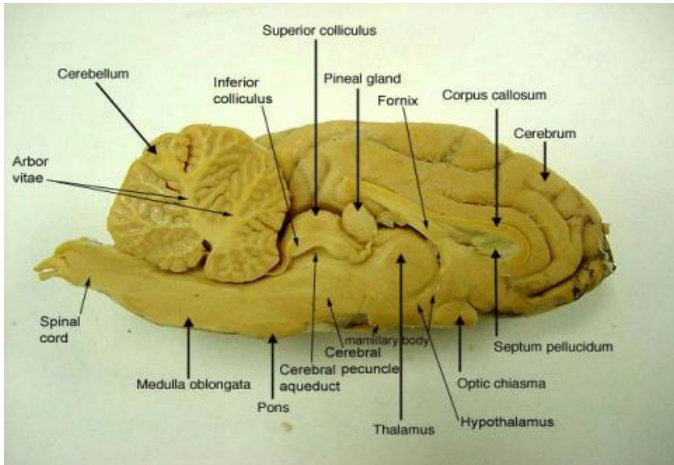
-cauda equina.

-Roots of spinal nerves  dorsal (sensory) → ganglion
Ventral with out ganglia .

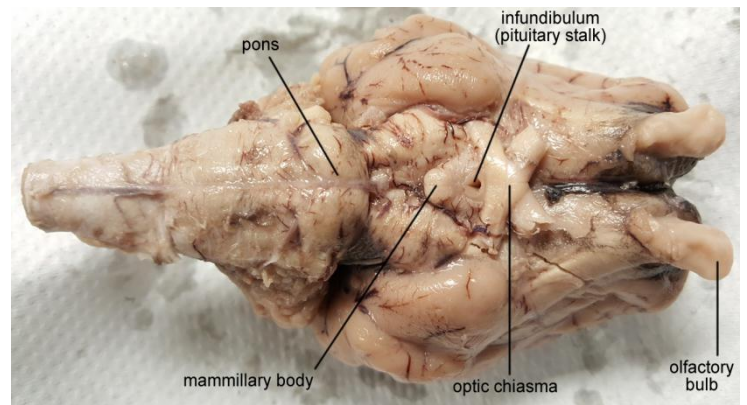
■ spinal meninges.

- Dura matter.
- Arachnoid.
- Pia matter.

Nervous system



Sheep brain, sagittal section, medial view



Brain Anatomy – Sheep Brain

Sheep brain with meninges, dorsal view

