

See discussions, stats, and author profiles for this publication at: <http://www.researchgate.net/publication/264118743>

Comparative anatomy of the female reproductive tract in farm animals

DATASET · JULY 2014

DOWNLOADS

32

VIEWS

67

2 AUTHORS:



Ahmed Ali

Qassim University

153 PUBLICATIONS 184 CITATIONS

SEE PROFILE



DR Derar

Assiut University

110 PUBLICATIONS 81 CITATIONS

SEE PROFILE

Table (1): Comparative anatomy of the reproductive tract in farm animals

| | Female camel | Mare | Cow | Buffalo-cow | Ewe and doe |
|---------------------------------------|-----------------------------------|-------------------------|-----------------------------|--------------------|------------------------------|
| Ovary: size (Length X Breadth) | 3.3 X 2.6 cm | 8 X 4 cm | 1.5-5 x 1–3 cm | 2-4x1.5-2.5 cm | 1.5x1.4 |
| Shape | bunch of grape | bean-shaped | ovoid | ovoid | Almond |
| Position | pelvic cavity | Sublumber | Pelvic cavity | Pelvic cavity | Pelvic |
| Pre-ovulatory follicle | 1.3-2 cm | 4-5 cm | 1.5-2 cm | 1.2-1.8 cm | 0.6-0.8 cm |
| Corpus luteum | 1.4-2.1 cm | 1.5-2 cm | 2-3 cm | 1.6-2.5 cm | 0.9-1.4 cm |
| Ovarian bursa | Completely covered the ovary | Less developed | Less developed | Less developed | Less developed |
| Oviduct: length | 17-28 cm | 20–30 cm | 20-30 cm | 18-25 cm | 15 cm |
| Opening in uterine horn | via a narrow orifice | via a narrow orifice | gradually | gradually | gradually |
| Uterus: Horns | 6–10 cm (right) 8–15 cm (left) | 20 – 25 cm | 20-40cm | 18-34 cm | 10-13 cm |
| Body | 4cm | 20 cm | 5cm | 4cm | 1.5-2 cm |
| Shape | T- or Y-shaped | T- or Y-shaped | ram horn-shaped | ram horn-shaped | ram horn-like |
| Position | Pelvic cavity | Pelvic cavity | pelvic cavity | pelvic cavity | Pelvic cavity |
| Endometrium | Folds | Folds | caruncles=80-120 | caruncles=100 | caruncles: ewe=88 doe=150 |
| Cervix: length x diameter | 4-6 x 3.6–6 cm | 4–10 x 2–5 cm | 6-10x3-5 cm | like cattle | 3-5 cm |
| Mucosa | 3-6 muscosal folds | longitudinal folds | 3-4 muscular rings | | like cattle, highly |
| Canal | dilatable | dilatable | convoluted, closed | | convoluted in ewes |
| Vagina: length | 25 -30 cm | 15-20 cm | 18-25cm | Like cattle, but | 8-10 cm |
| Mucosa | many longitudinal folds | many longitudinal folds | smooth | shorter | Smooth |
| Vagina : Vestibulum | separated by strong sphincter | slight constriction | slight constriction | | Slight constriction |
| Suburethral diverticulum | absent | absent | present | | Very small |
| Vulva: long position | 6-7 cm directly under anus | 7 cm below anus | 10-13 cm 5 cm below anus | Fleshy | 3 cm Just below anus |
| Clitoris | ill-developed | well-developed, round | 2-5 cm long | | Short |
| Hair | short | no hair | at ventral commissure | | short |

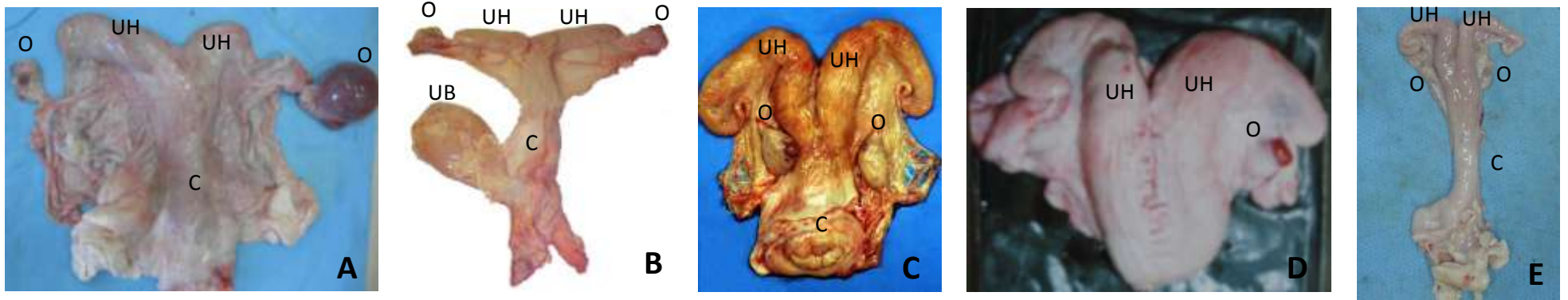


Fig. 1: Reproductive tract of female camel (A), mare (B), cow (C), buffalo-cow (D), and ewe (E). O=ovary, UH=uterine horn, C=cervix, UB=urinary bladder

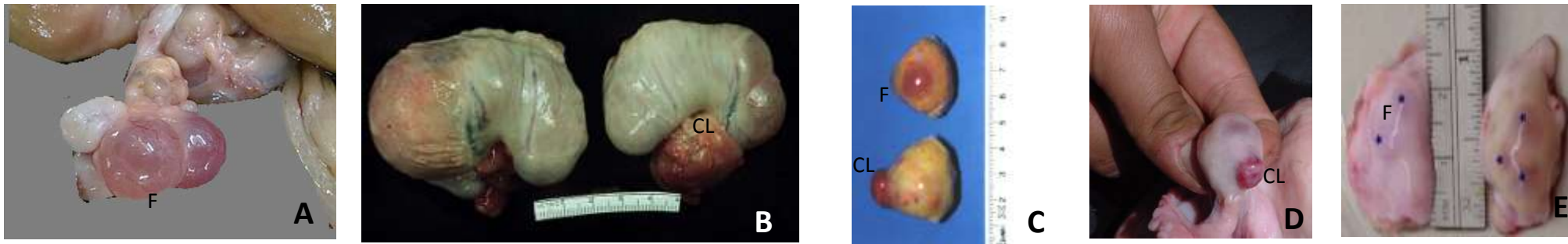


Fig. 2: Ovaries of female camel (A), mare (B), cow (C), buffalo-cow (D), and ewe (E): F: follicle, CL: corpus luteum

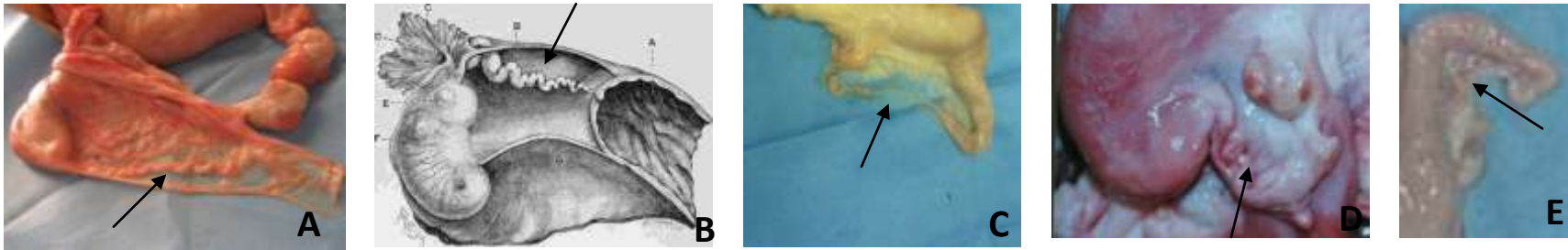


Fig. 3: Fallopian tubes (arrow) in female camel (A), mare (B), cow (C), buffalo-cow (D), and ewe (E)

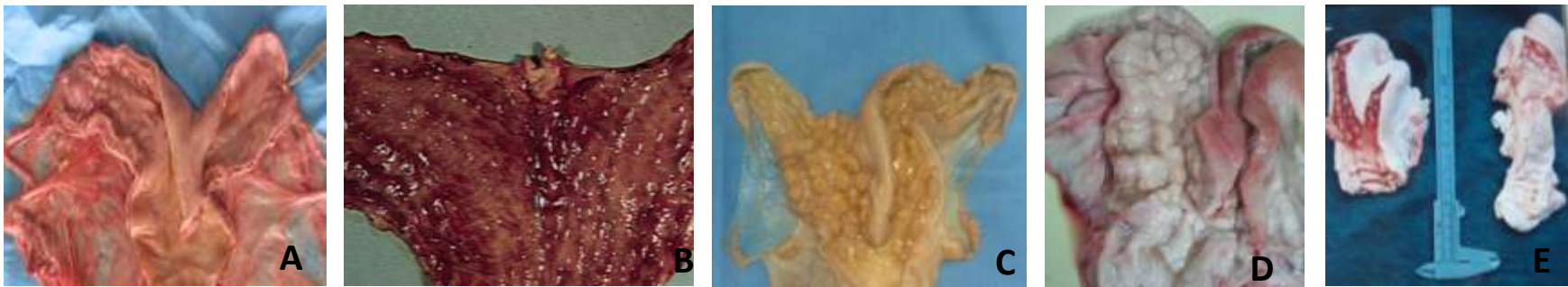


Fig. 4: Endometrium of female camel (A), mare (B), cow (C), buffalo-cow (D), and ewe (left) and doe (right) (E)



Fig. 5: Cervix of female camel (A), mare (B), cow (C), buffalo-cow (D), ewe (Upper), and doe (lower) (D)

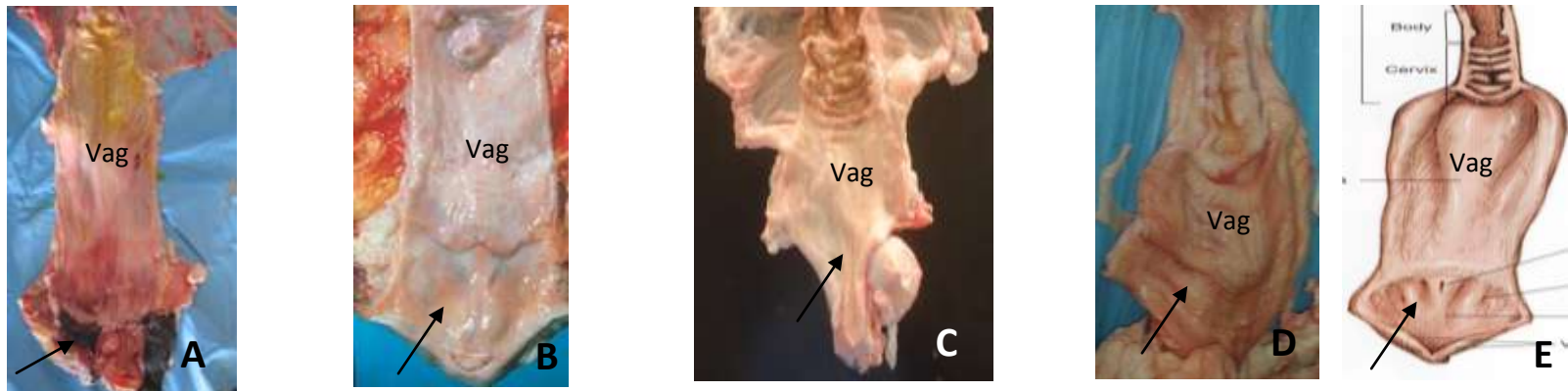


Fig. 6: Vagina (Vag) and vestibulum (arrow) in female camel (A), mare (B), cow (C), buffalo-cow (D), ewe (E)

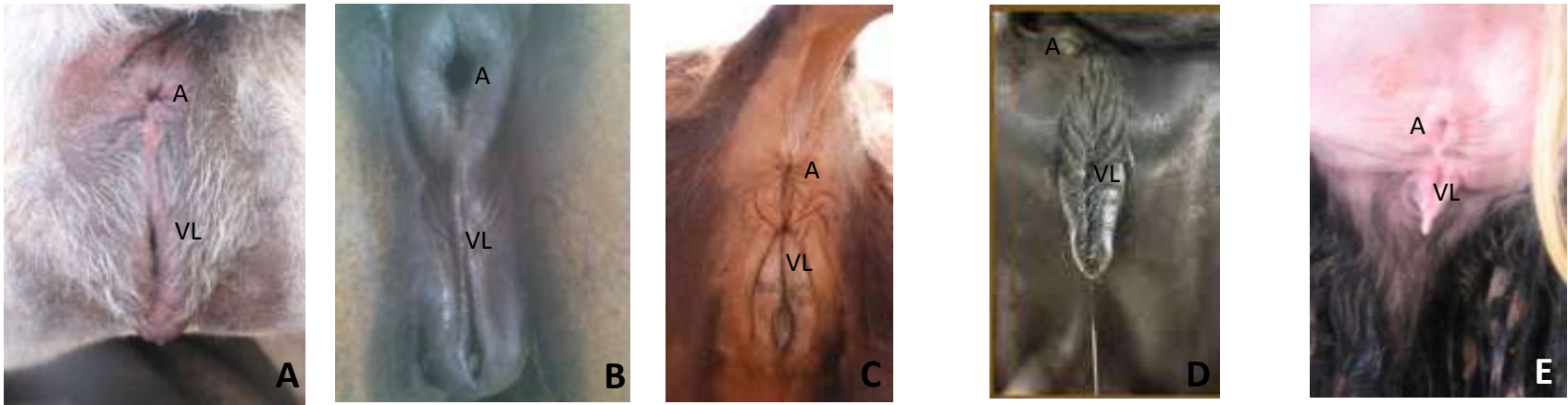


Fig. 7: Vulva (VL) of female camel (A), mare (B), cow (C), buffalo-cow (D), ewe (E). A: anus.

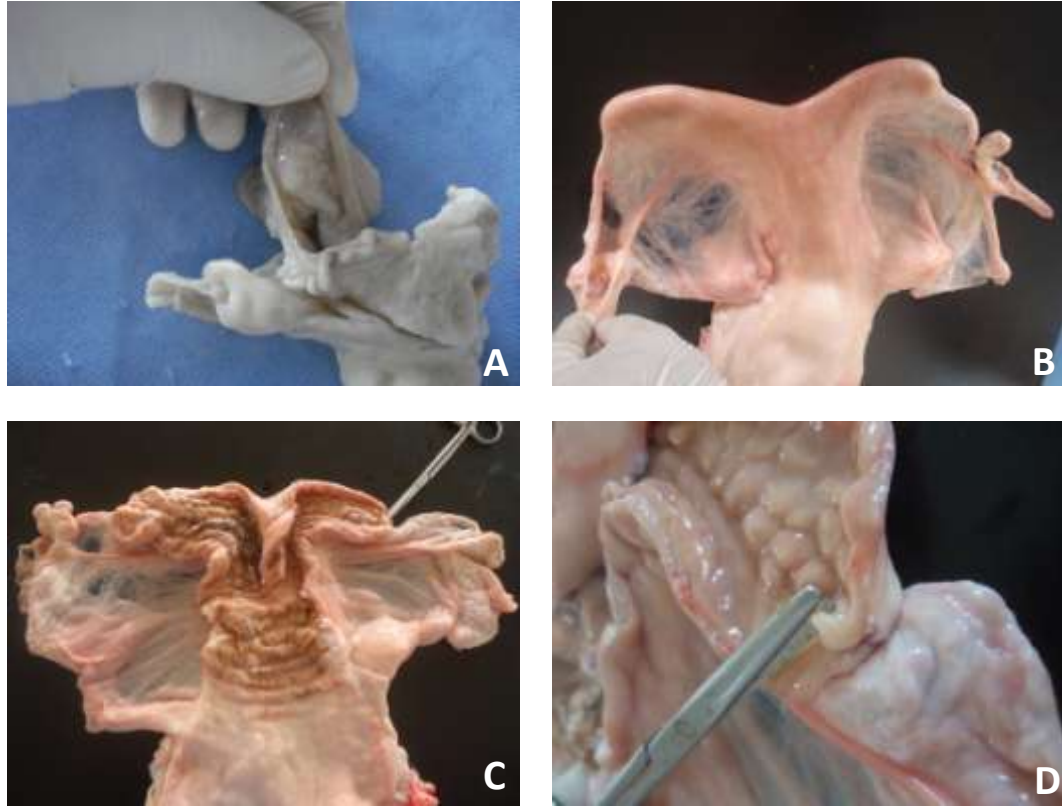


Fig. 8: The ovarian bursa (A, B) completely covered the ovary, the fallopian tube opens into the uterine horn with a muscular papilla (C, D) in female camels