

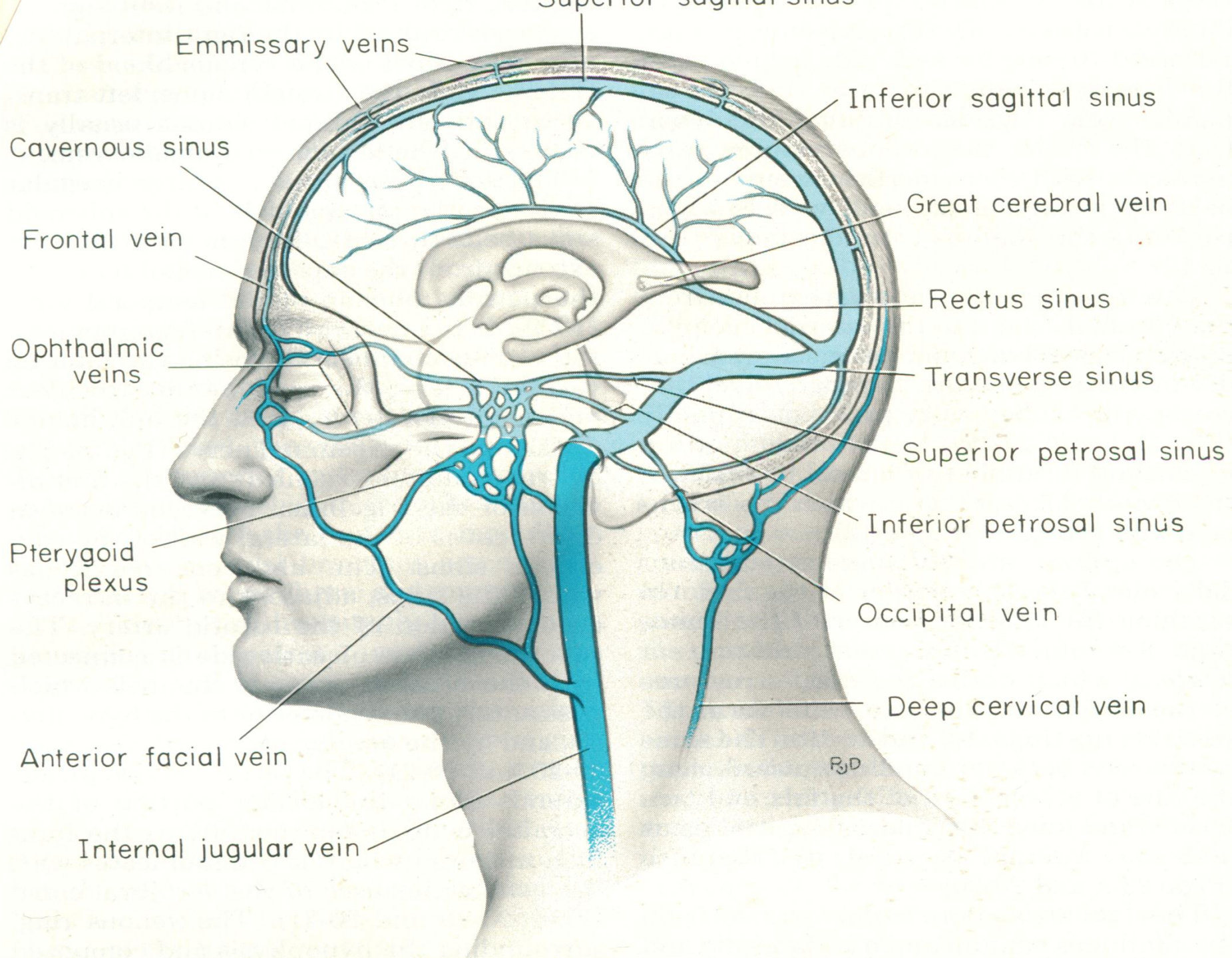
## Emmissary veins

### Def:

- \*\*\* **valveless** veins which connect the dural sinuses inside the skull with the veins outside the skull.
- \*\*\* They pass through foramina in the walls of
- the skull.

### Clinical importance:

1. They serve to **equalize** blood pressure between dural sinuses and veins outside the skull.
2. **Infection** outside the skull may pass along these routes to reach cranial cavity.



## Connections:

### 1. With dural sinuses:

- a. With **superior sagittal sinus** through
  1. **parietal** foramen joining the sinus with occipital sinus
  2. foramen **ceacum** joining the sinus with veins of the nose
  
- b. With **sigmoid sinus** through
  1. **mastoid** foramen joining with occipital veins
  2. **post-condylar foramen** joining with sub-occipital plexus of veins

- c. With **cavernous sinus** through
1. **foramen-ovale** joining with **pterygoid** plexus of veins
  2. **carotid canal** joining a **pharyngeal** plexus of veins
  3. **ophthalmic veins** , may be considered as emissary veins by connecting **cavernous** with **cutaneous** veins of forehead and upper part of the face.

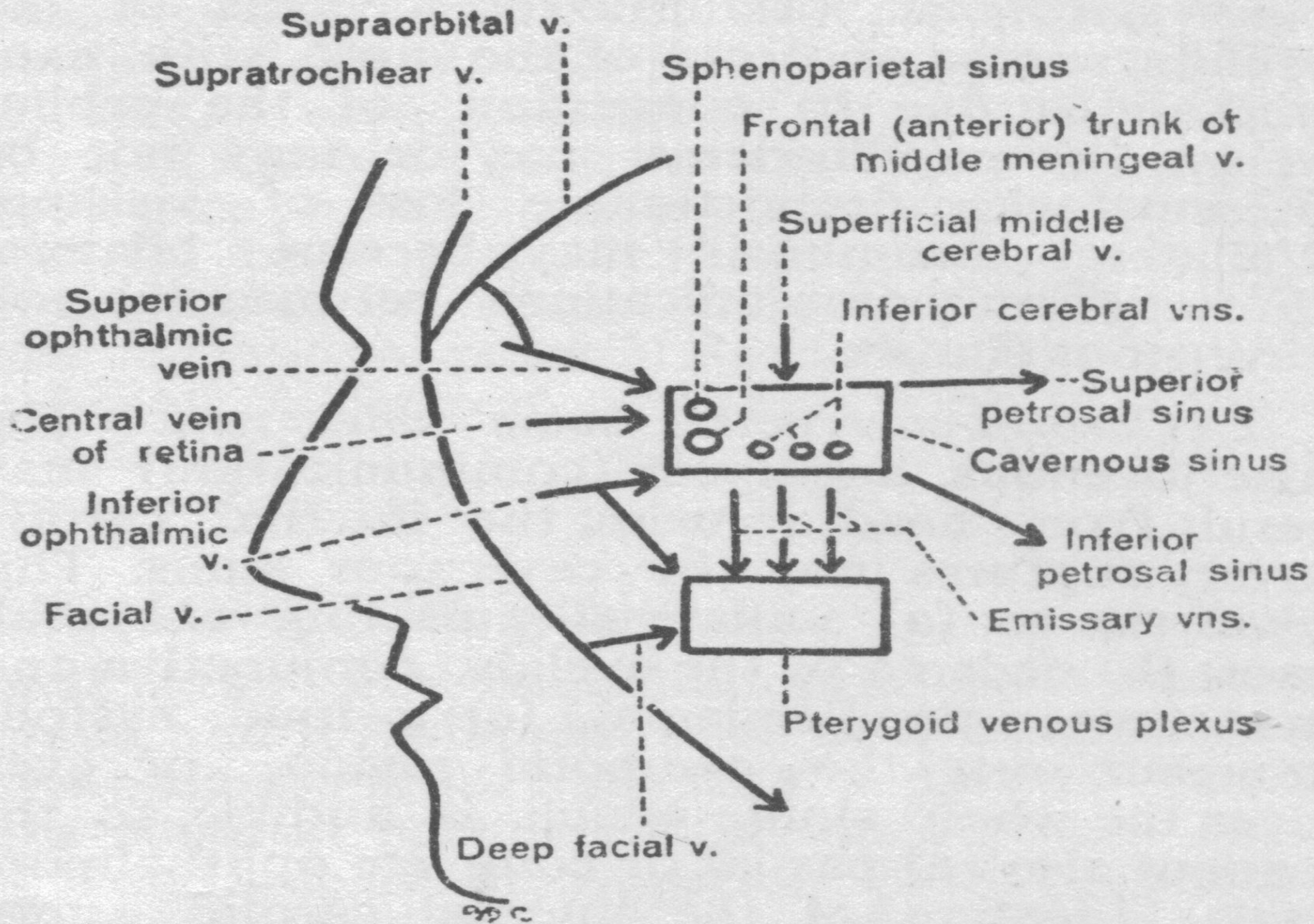


Fig. 38 Side view of the tributaries and communications of the cavernous sinus.