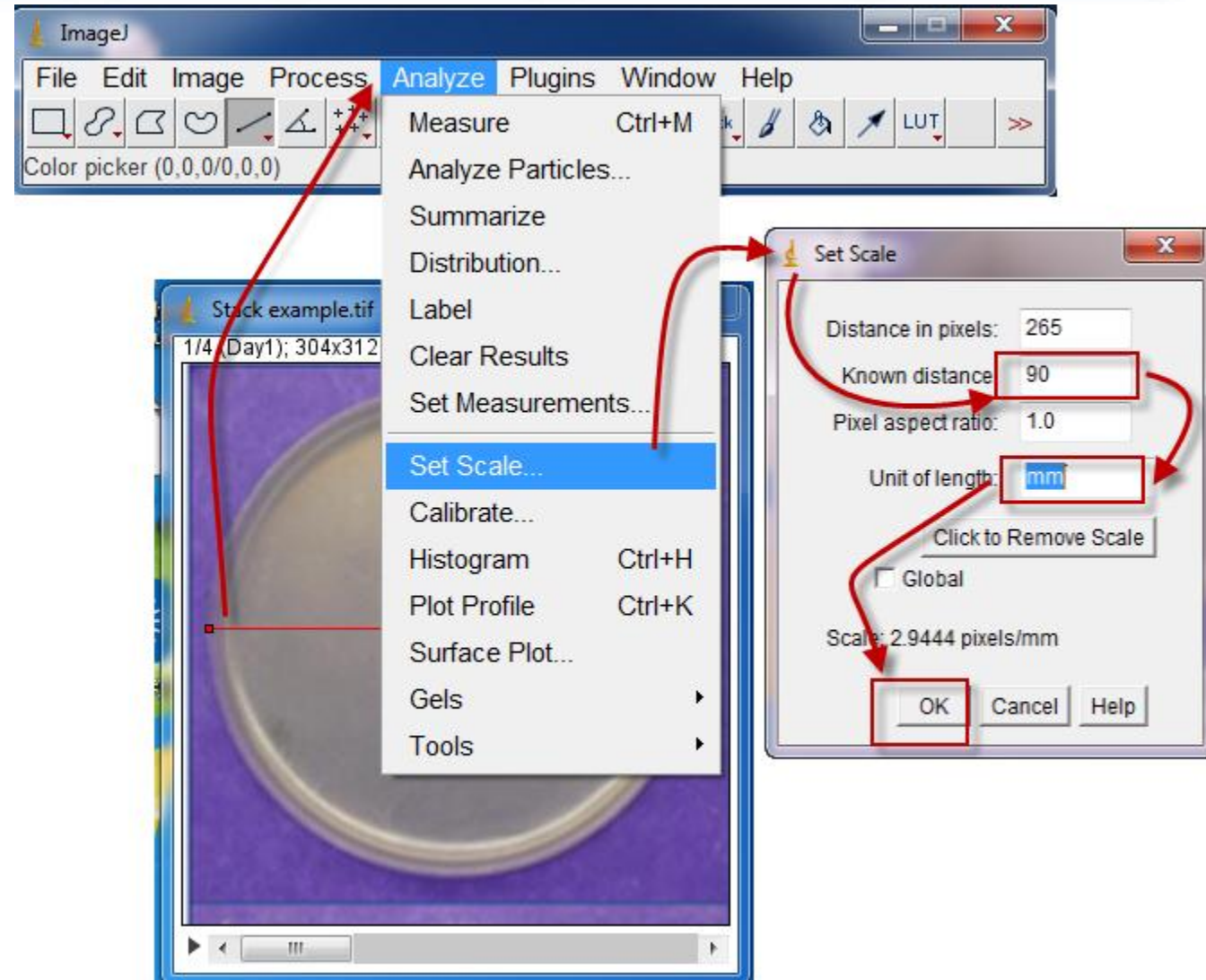


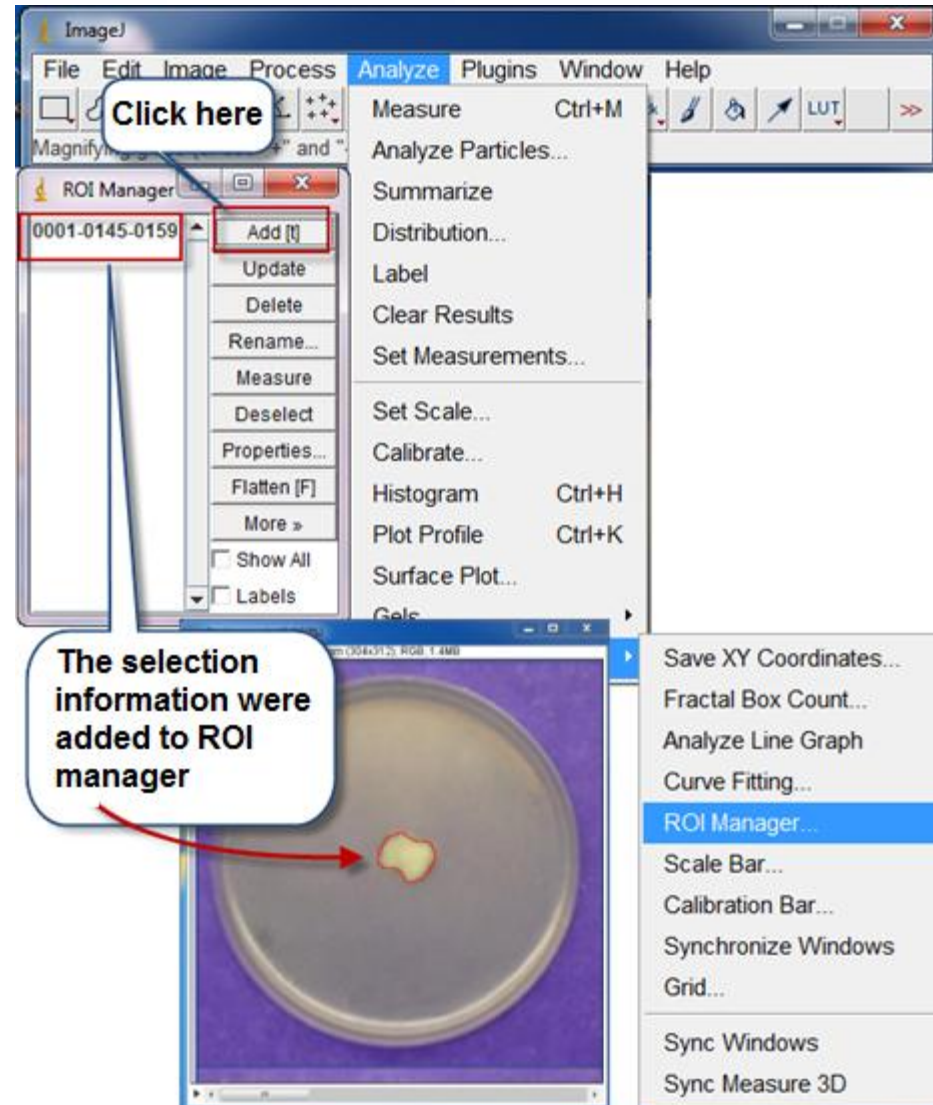
Stacks – Example for time series measurements

- ❖ The first step is to scale measurements considering the petri plate radius as a known length as we learned before. Move the slider across slices to see that the line you'd draw was drawn in each slice in the same place. Go to analyze menu >> Set Scale >> the distance will be 90 mm >> Ok.



Stacks – Example for time series measurements

- ❖ As we need to calculate the area in each slice separately, so we have to select each area manually:
 - Select the radial growth area free hand selection tool or any selection method satisfy your experience.
 - Go to Analyze menu >> Tools >> ROI Manger >> Add (t) >> the selection ROI information will be recorded. Repeat that for each slice.



Stacks – Example for time series measurements

- ❖ From ROI Manager window >> Click Measure >> the result window will appear including the four areas measurement.

Results

Area
1 116.958
2 6532.366
3 6532.366
4 6532.366

ROI Manager

- 0001-0145-0159
- 0002-0153-0147
- 0003-0153-0147
- 0004-0153-0147

Measure

Look: The last three areas are the same as the fungus filled the plate since the third day

