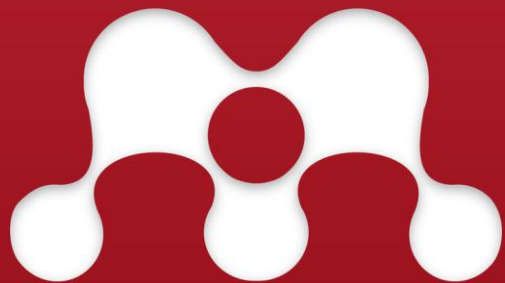


Computer Applications

ImageJ 11

Dr. Labeed Al – Saad , Basrah University, College of Agriculture



MENDELEY



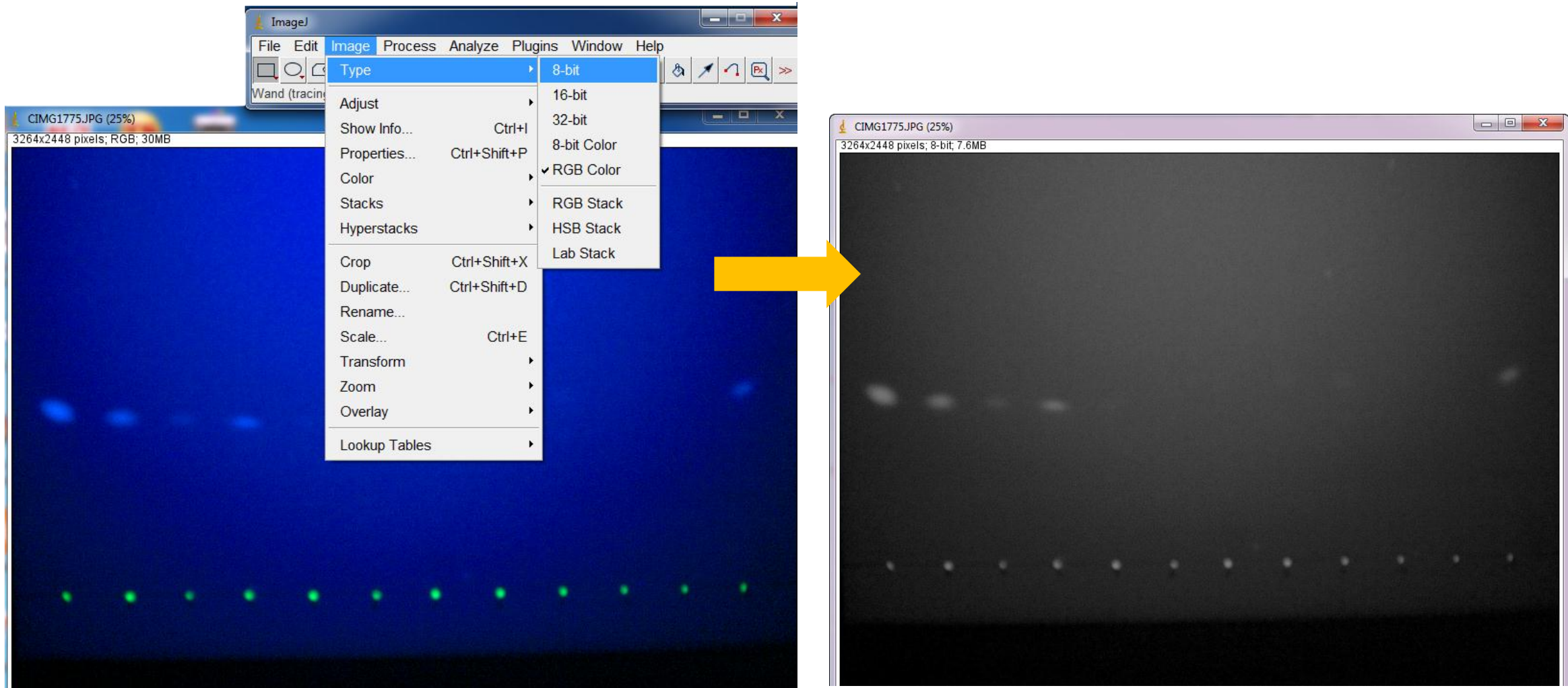
ImageJ

Image Processing & Analysis in Java



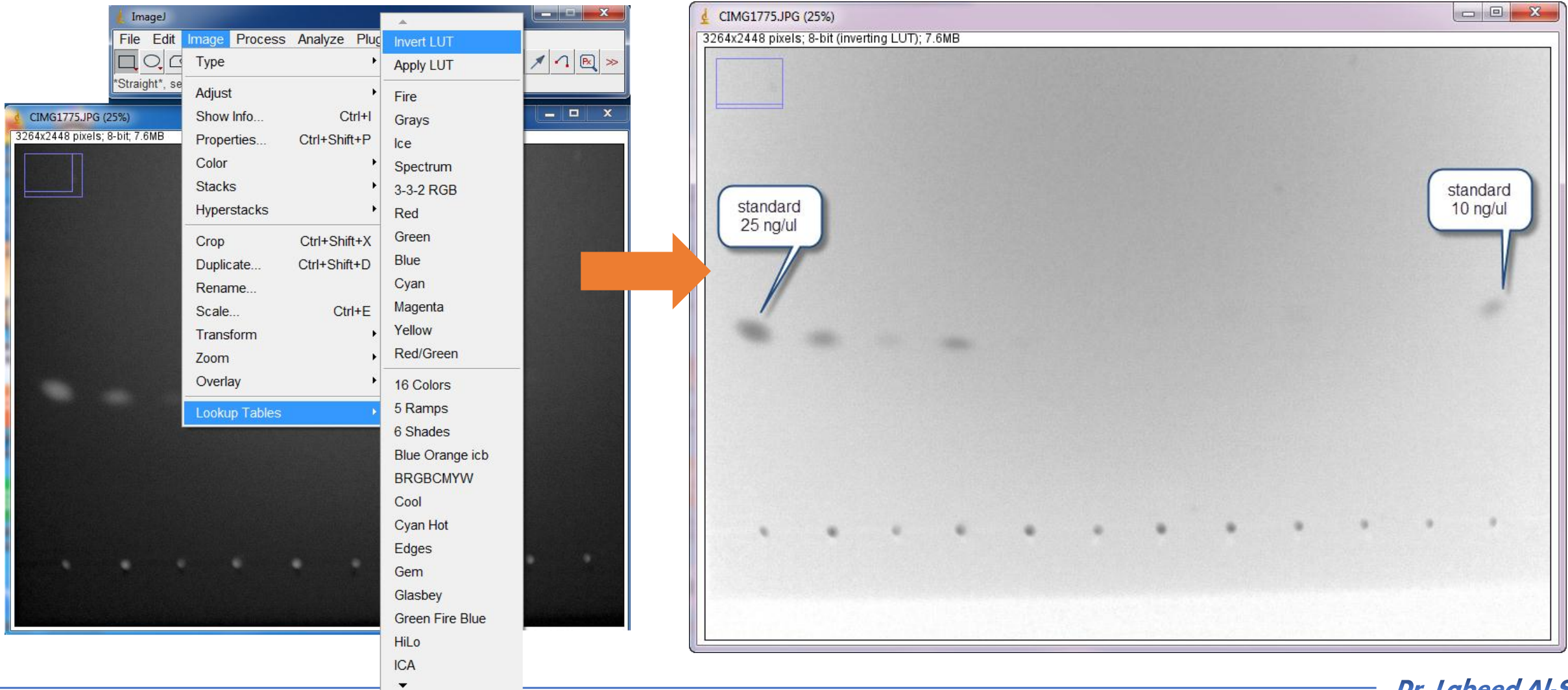
Gel analysis

❖ open Image >> convert to 8-bit gray scale



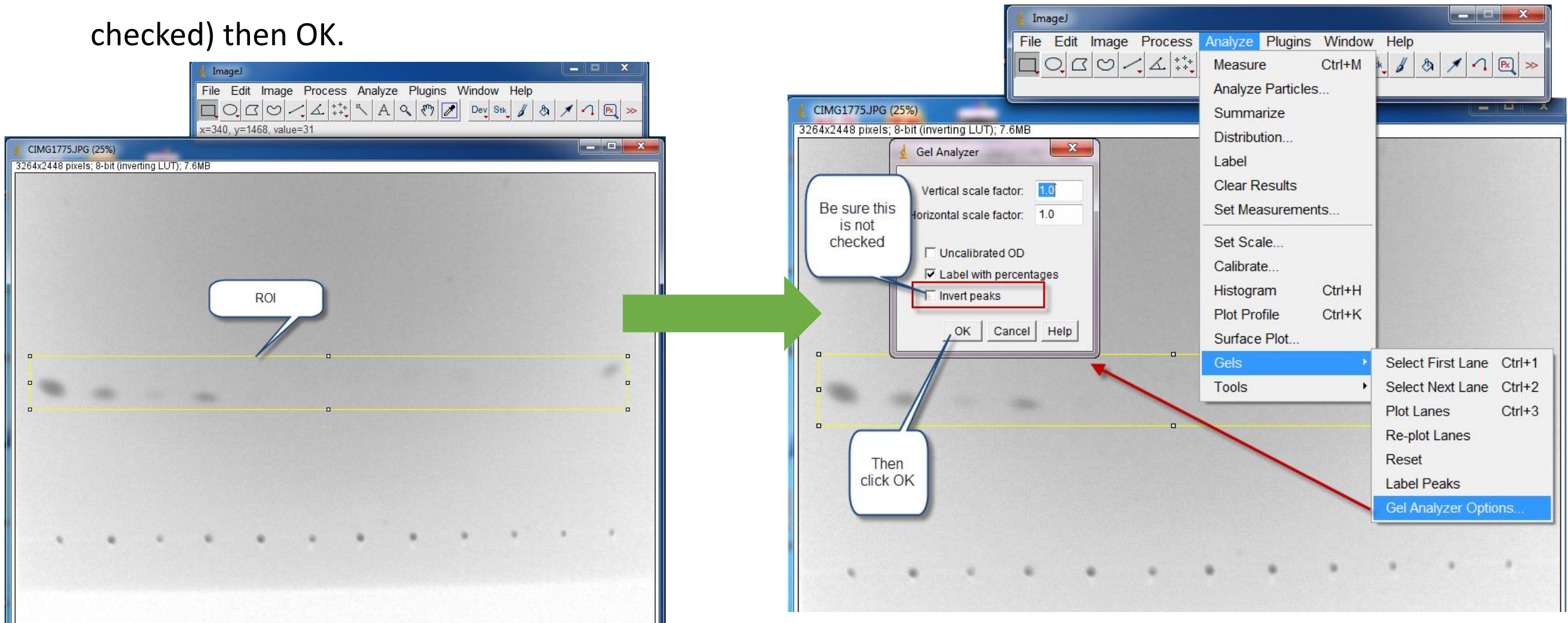
Gel analysis

❖ Go to Image >> Lookup tables >> Invert LUT (This will convert image to a negative image)



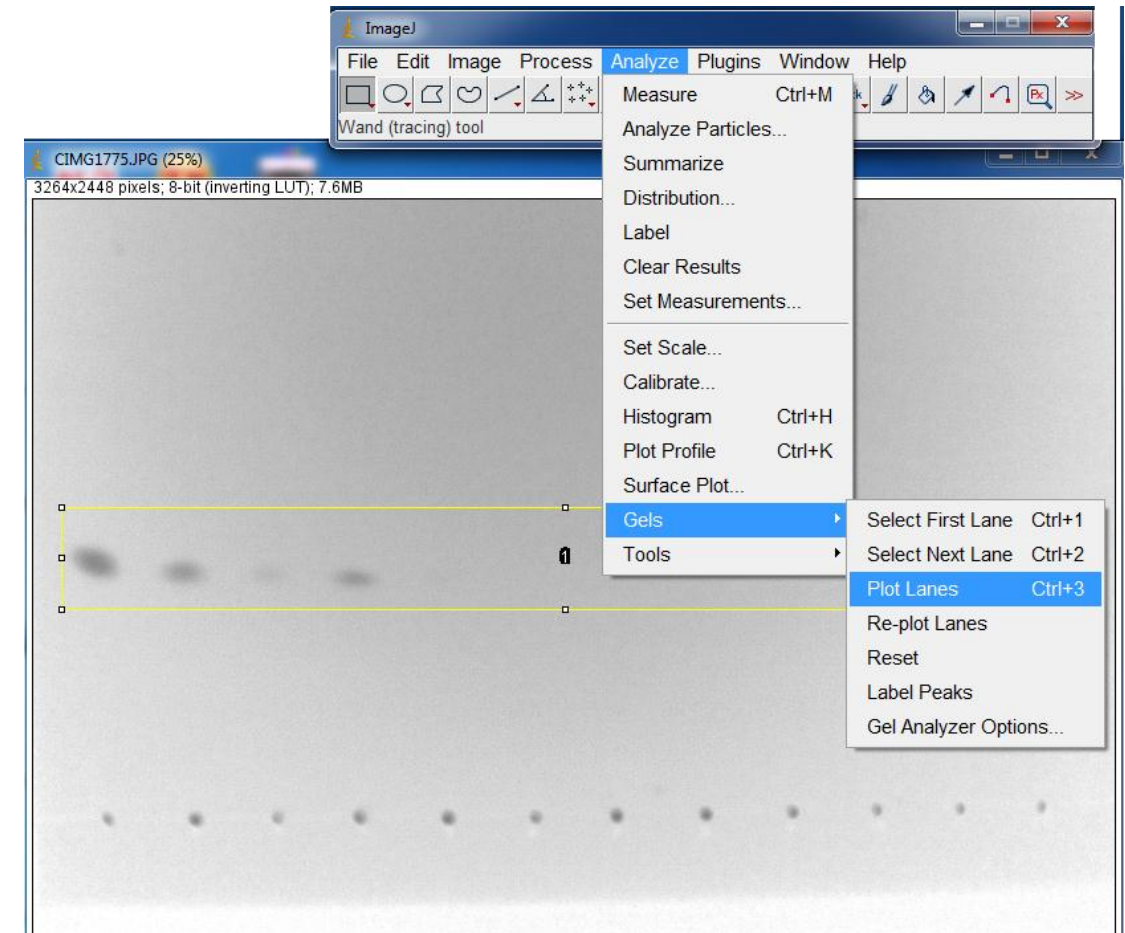
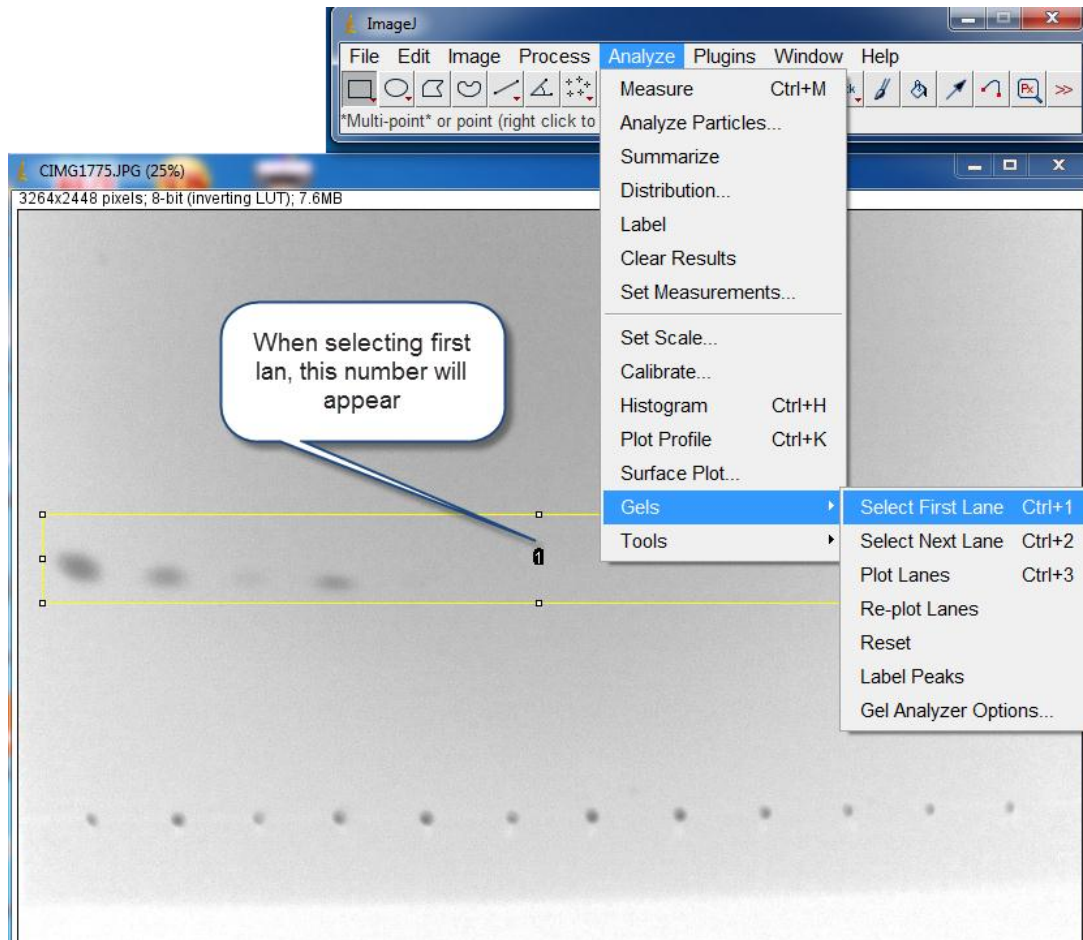
Gel analysis

- ❖ Use rectangular tool to highlight ROI (Region of interest).
- ❖ Go to Analyze >> Gels >> Gel Analyzer options >> new window will appear (be sure **Invert peaks** is not checked) then OK.



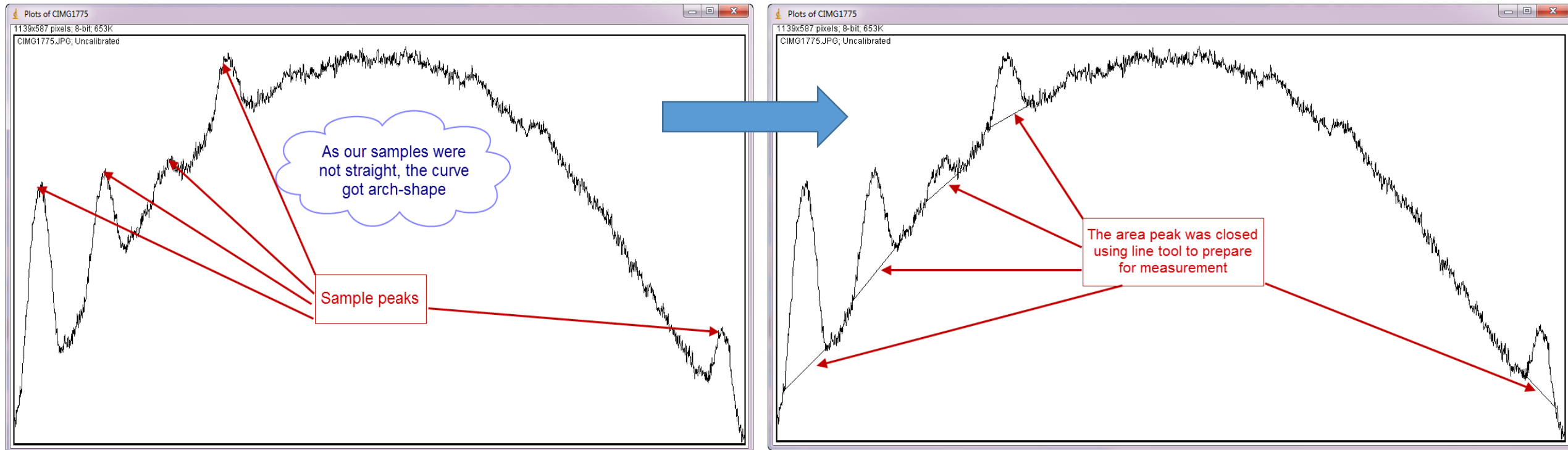
Gel analysis

- ❖ Go to Analyze >> Gels >> select first lane
- ❖ Go to Analyze >> Gels >> Plot lanes



Gel analysis

- ❖ Use line tool to close the peaks area



Gel analysis

- ❖ To measure the area under peak use wand tool to select it and the area will appear in the results window.

