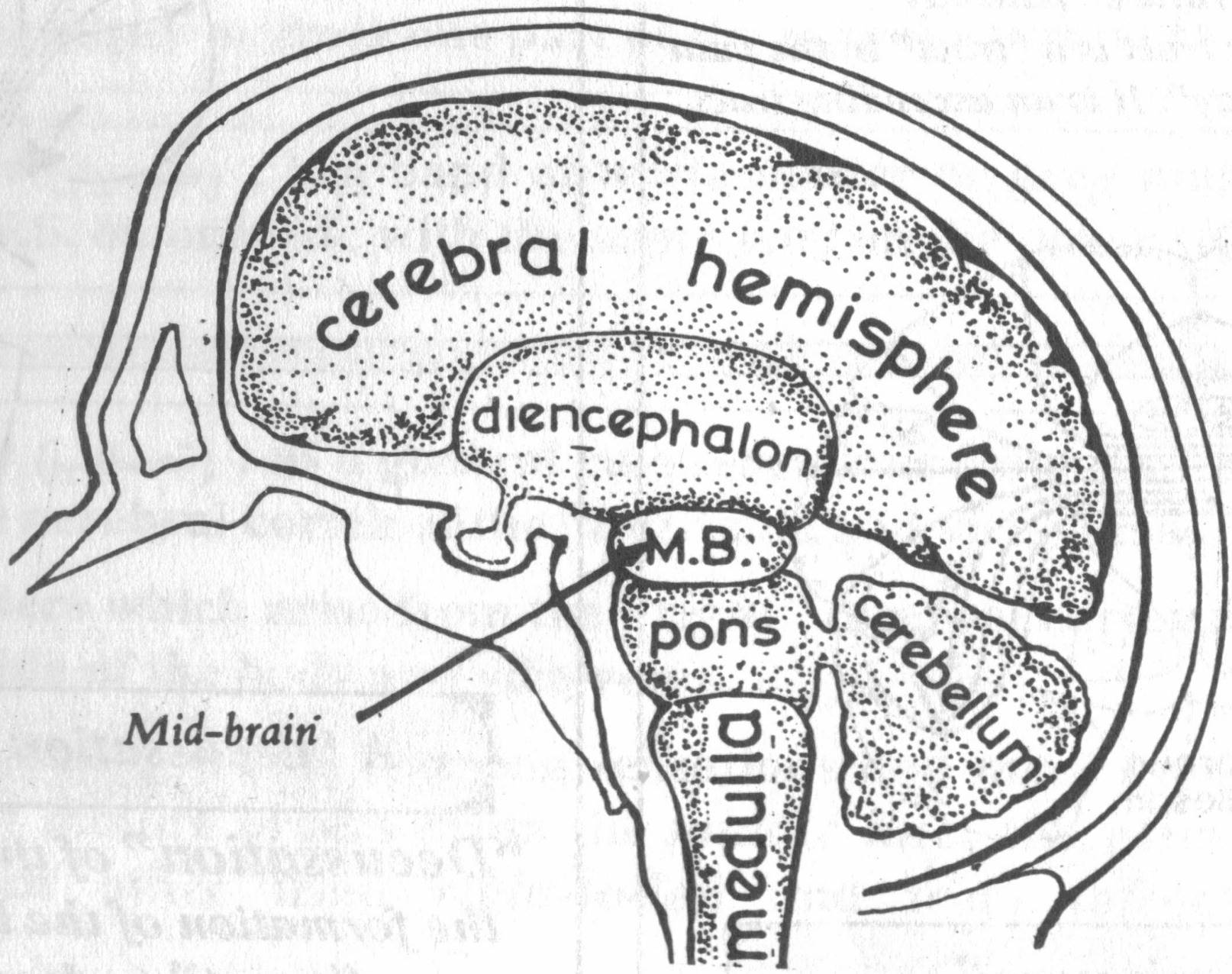


Neurology

parts of the brain

Dr Nawal M.Abdulla



cerebral hemisphere

diencephalon

M.B.

pons

cerebellum

medulla

Mid-brain

IN GENERAL

2 cerebral hemispheres

Brain stem – medulla oblongata

_ pons

_ midbrain

_ diencephalon

- **Each cerebral hemisphere consist of:**
 - 1. cerebral cortex**
 - 2. cerebral white matter**
 - 3. basal ganglia(deeply placed nuclei)**
 - 4. lateral ventricle.**

Cerebellum:

- **central part=vermis**
- **2 cerebellar hemisphere on either side.**

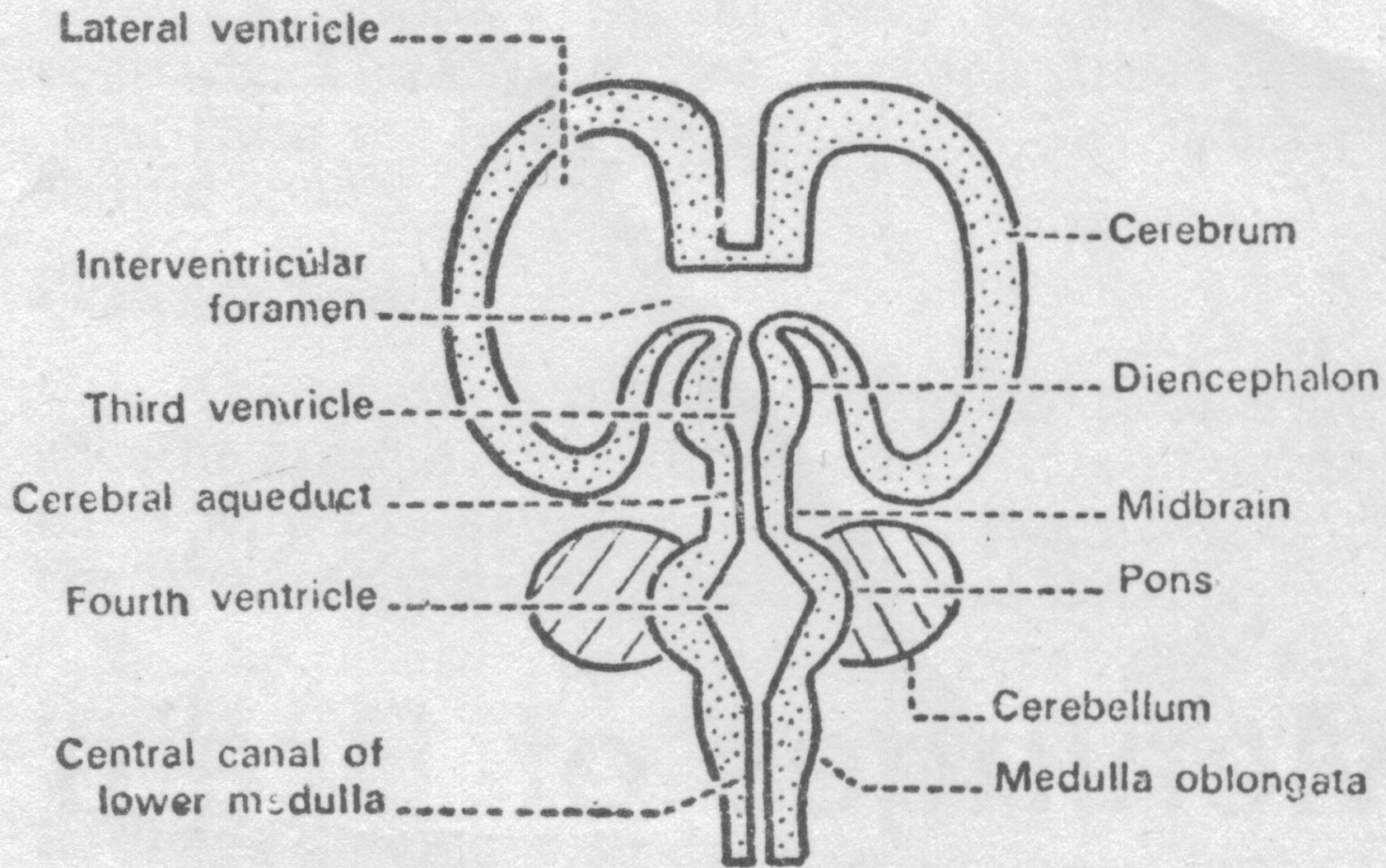


Fig. 201 The parts of brain.

Parts of brain

<i>Parts</i>	<i>subdivisions</i>	<i>cavity</i>
Forebrain prosencephalon	a. cerebrum	lateral ventricle
	telencephalon	
	b. Diencephalon	3 rd ventricle
	1. thalamus	
	2. hypothalamus	
	3. metathalamus	
	(med+lat ,geniculate body)	
	4. epithalamus	
	(pineal body,habenular trigone, post-commissure)	

2. Midbrain
(**mesencephalon**)

crus cerebri, tegmentum
tectum , substantia nigra

cerebral
aqueduct

3. Hindbrain
(**rhombencephalon**)

a. myelencephalon (M.o)
b. metencephalon
(pons, cerebellum)

4th ventricle

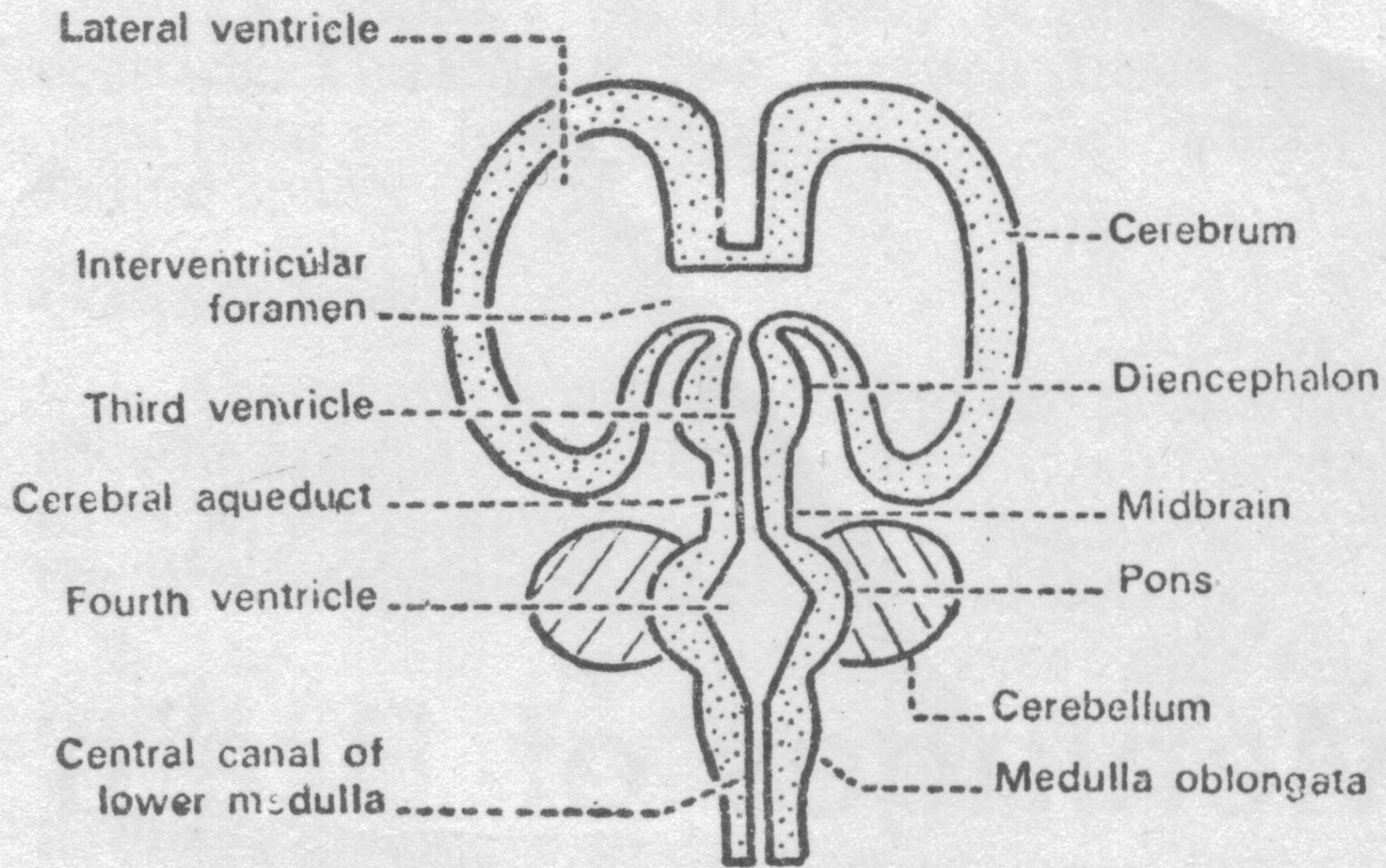


Fig. 201 The parts of brain.

Parts of brain