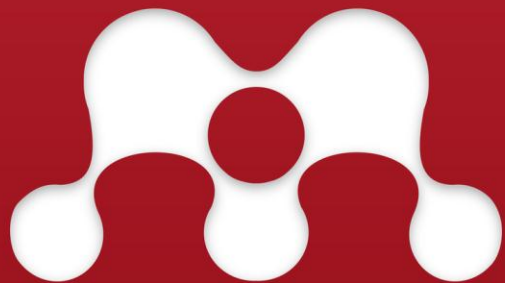


Computer Applications

Mendeley 2

Dr. Labeed Al-Saad, Basrah University, College of Agriculture



MENDELEY



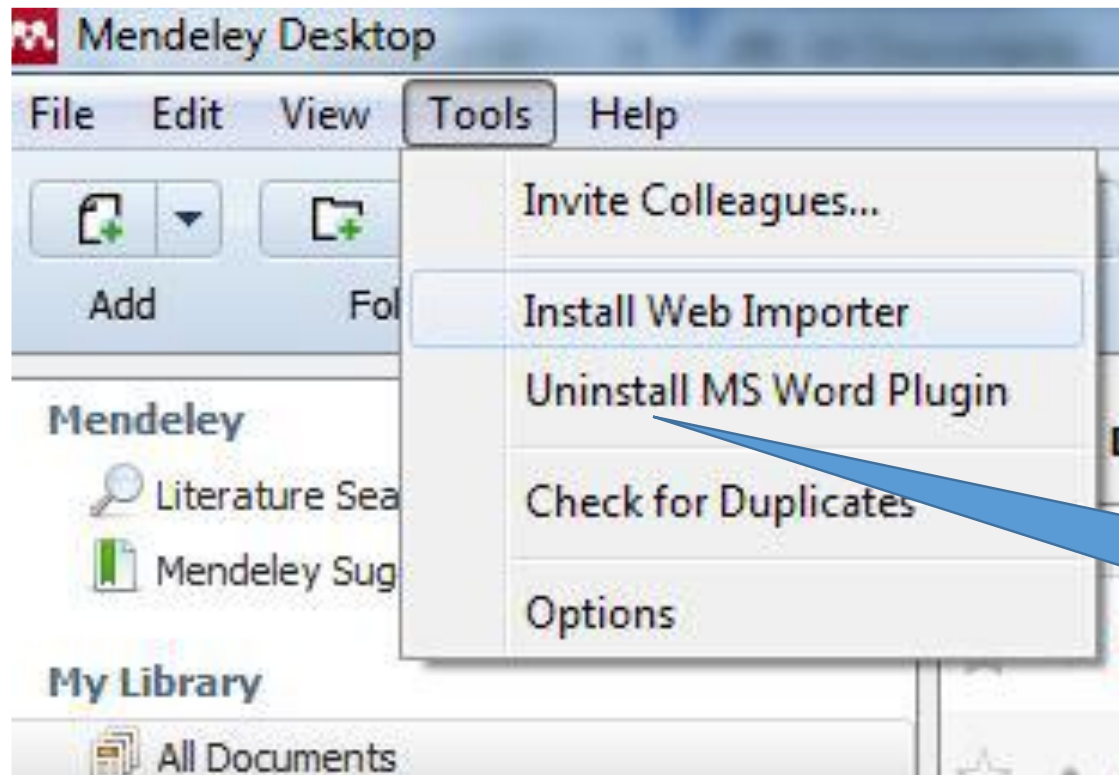
ImageJ

Image Processing & Analysis in Java



Install MS Word plugin and web importer

- ❖ Go to the tools menu in the desktop version > install MS Word plugin.



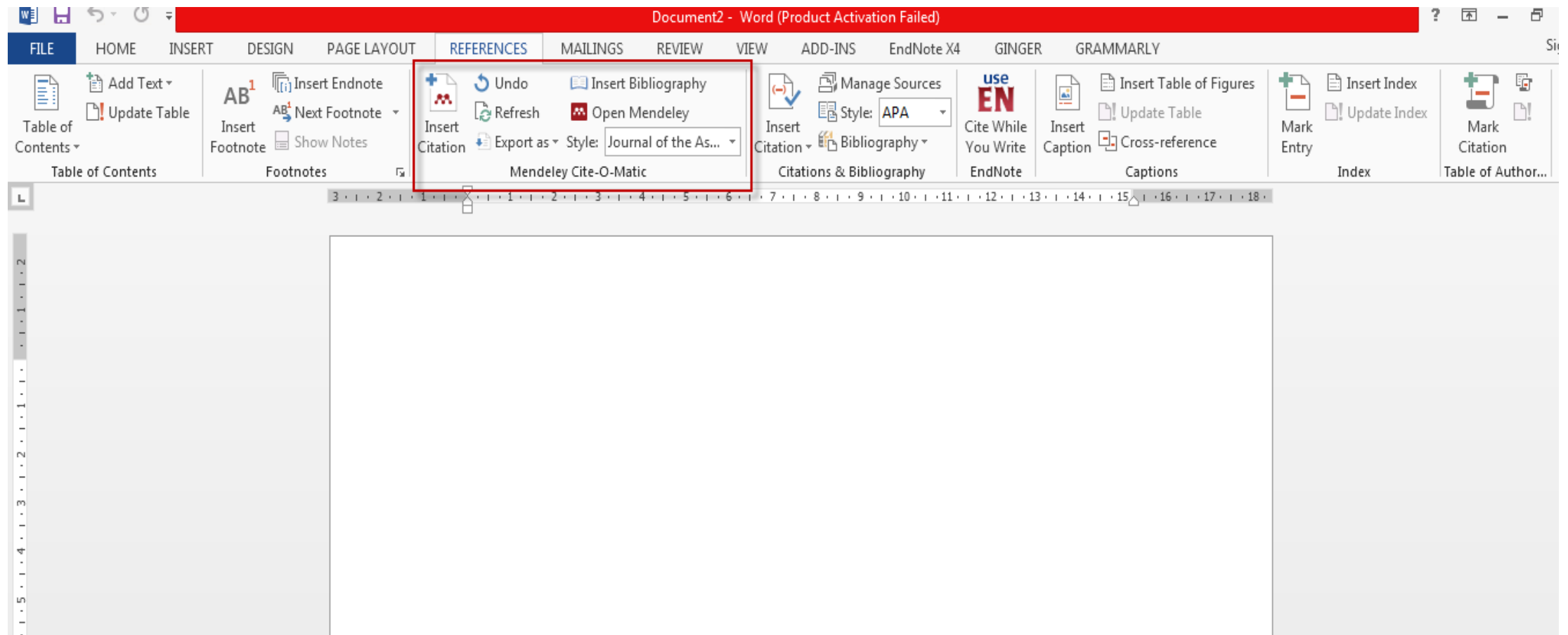
Helpful video online

<https://www.youtube.com/watch?v=nY98xbhB2t4>

You see **Uninstall MS Word** here because I already install it in my computer

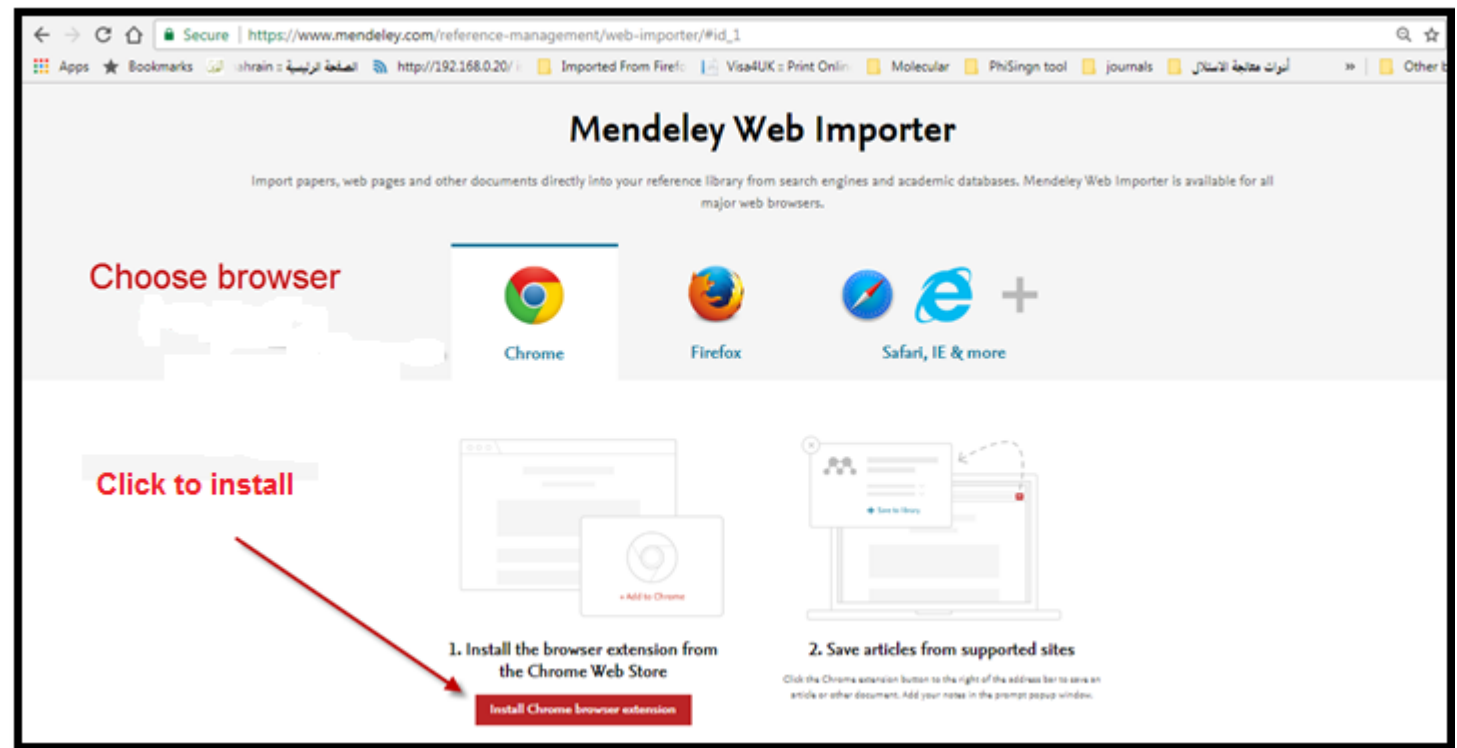
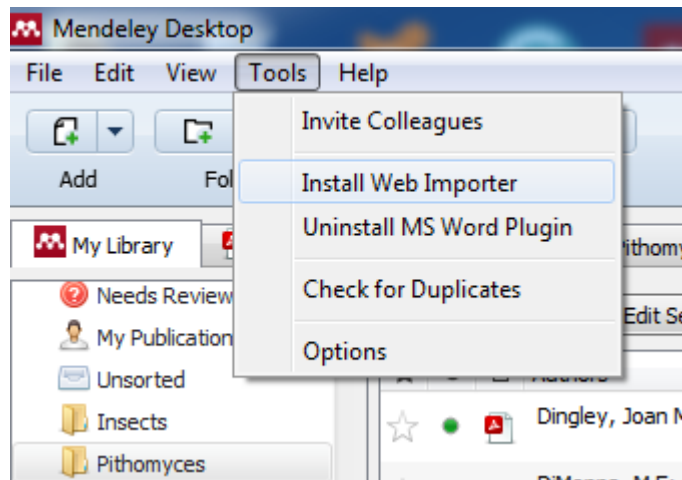
Install MS Word plugin and web importer

❖ You can open MS Word and find it in the **References** tool bar.

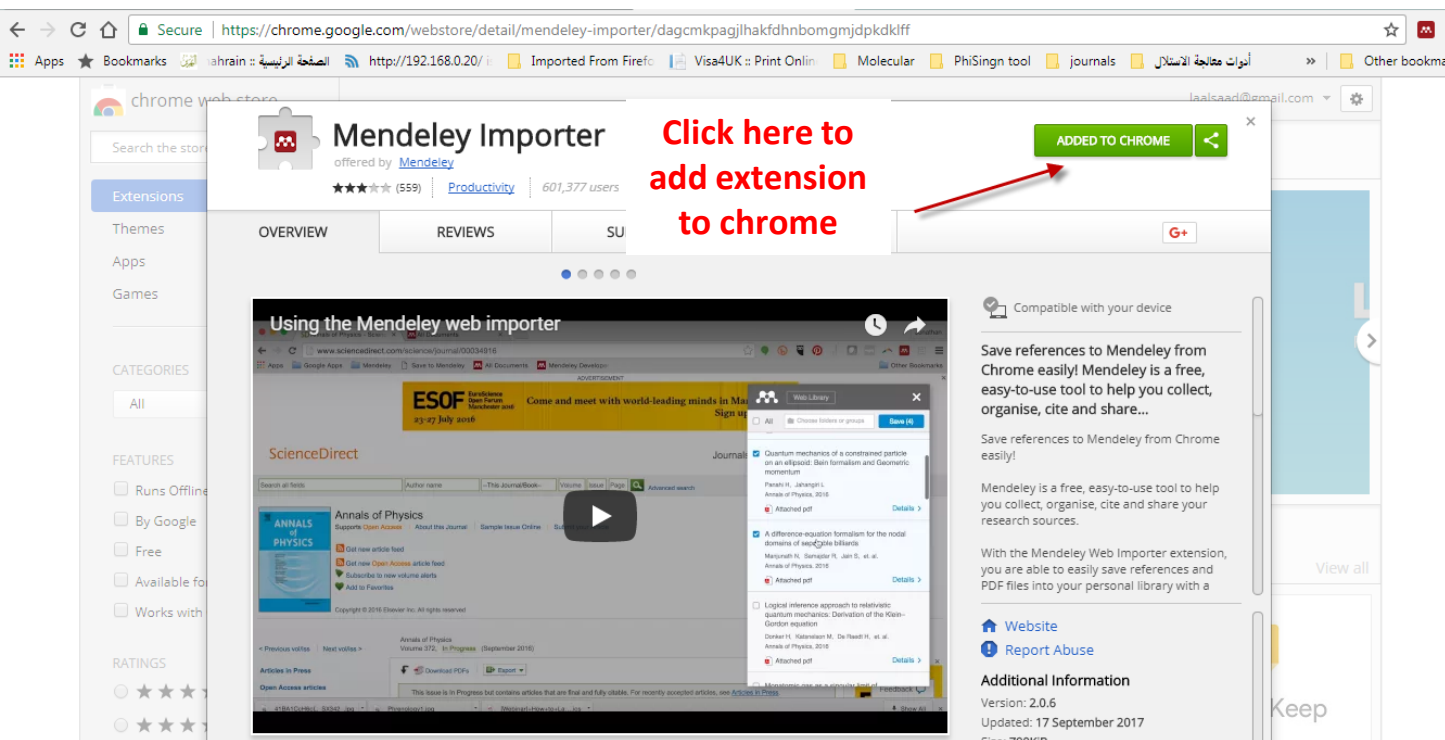


Install MS Word plugin and web importer

❖ Go to the tools menu in the desktop version > install Web importer.



Install MS Word plugin and web importer



chrome web store

Secure | <https://chrome.google.com/webstore/detail/mendeley-importer/dagcmkpagihakfdhnbomgmjdpkdklff>

Extensions

Themes

Apps

Games

CATEGORIES

All

FEATURES

Runs Offline

By Google

Free

Available for

Works with

RATINGS

★★★★★

★★★★★

★★★★★

Mendeley Importer

offered by Mendeley

★★★★★ (559) | Productivity | 601,377 users

Click here to add extension to chrome

ADDED TO CHROME

Using the Mendeley web importer

ESOF

ScienceDirect

Annals of Physics

Quantum mechanics of a constrained particle on an ellipsoid: Bin formalism and Geometric monodromy

A difference equation formalism for the nodal domains of $\text{exp}(Q_n)$ billiards

Logical inference approach to relativistic quantum mechanics: Derivation of the Klein-Gordon equation

Website

Report Abuse

Additional Information

Version: 2.0.6

Updated: 17 September 2017

Size: 70KB

❖ Then the extension will be downloaded and added to your browser (as you see it is already added to my chrome so, the button appeared in green) .

Creating Watch Folder

What is Watch Folder ?

- ❖ It is a folder on your computer can be “Watched” by Mendeley.
- ❖ Each pdf or citation file added to that folder will automatically added to Mendeley library.

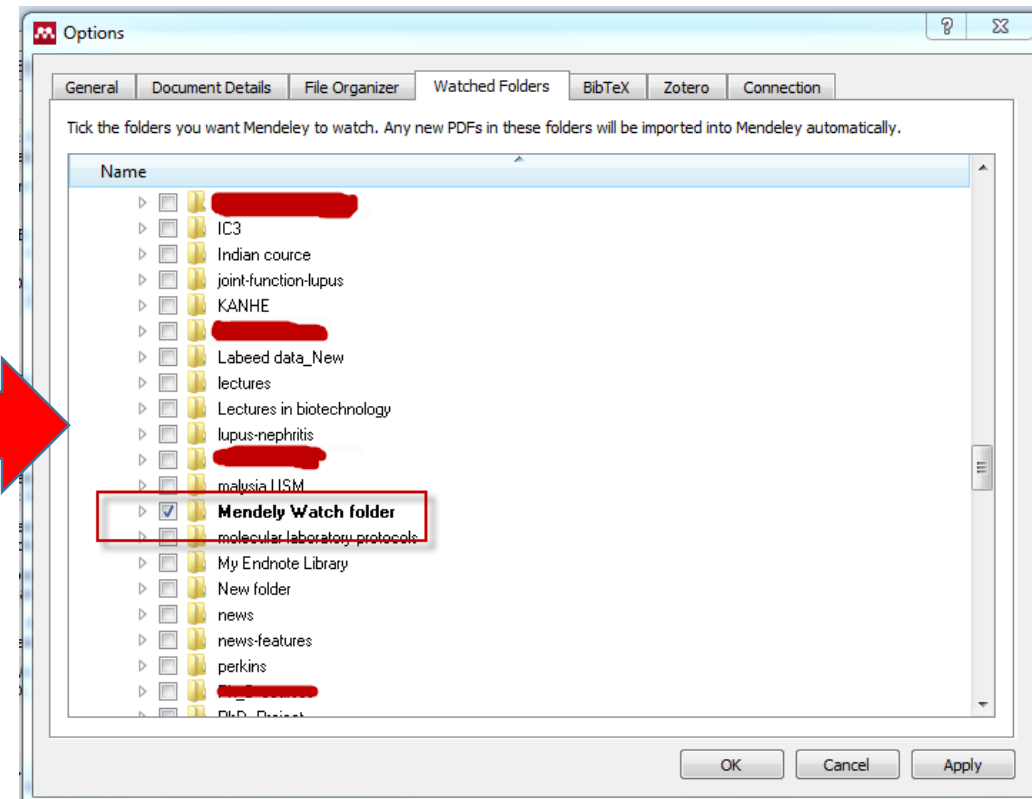
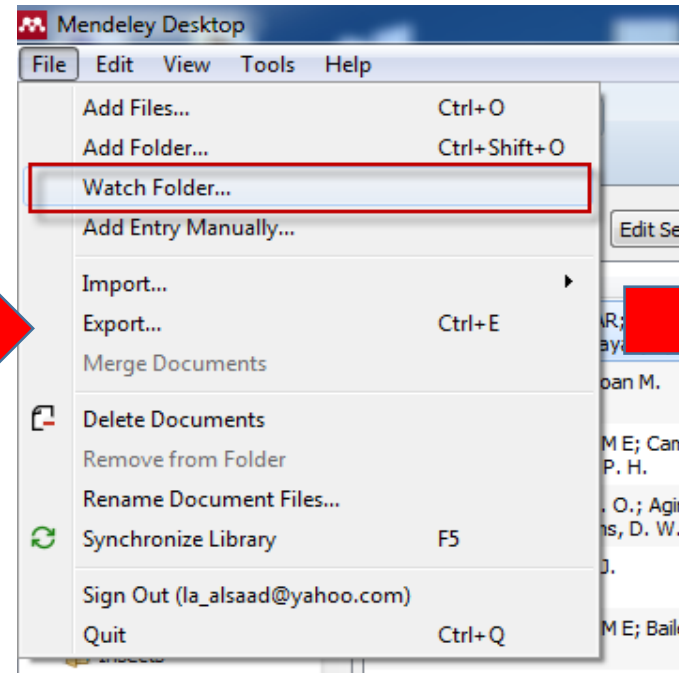
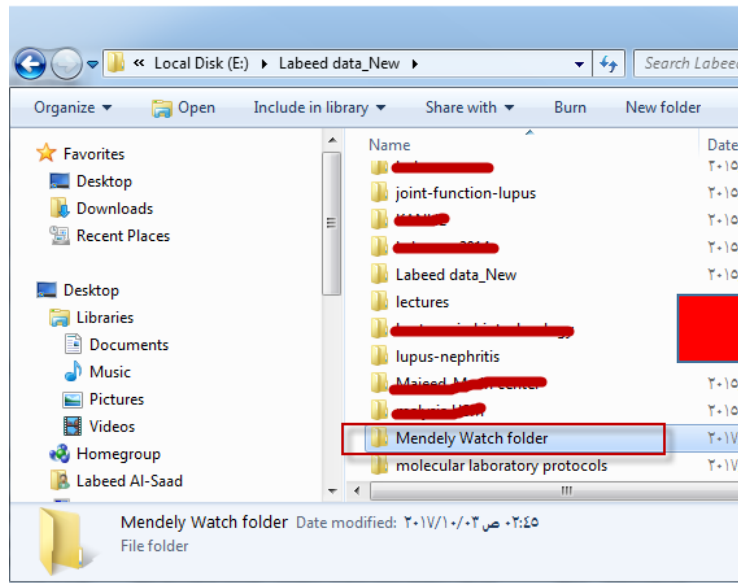
Why we use Watch Folder ?

- ❖ Because mendeley extract citation data from added pdf files and left them in their origin folders on hard disk *i. e.* just link them to its library.
- ❖ When one of these folders deleted, the linked reference will be go on, so if we placed all our pdf files in one known folder (watched folder), the data will be conserved.

Creating Watch Folder

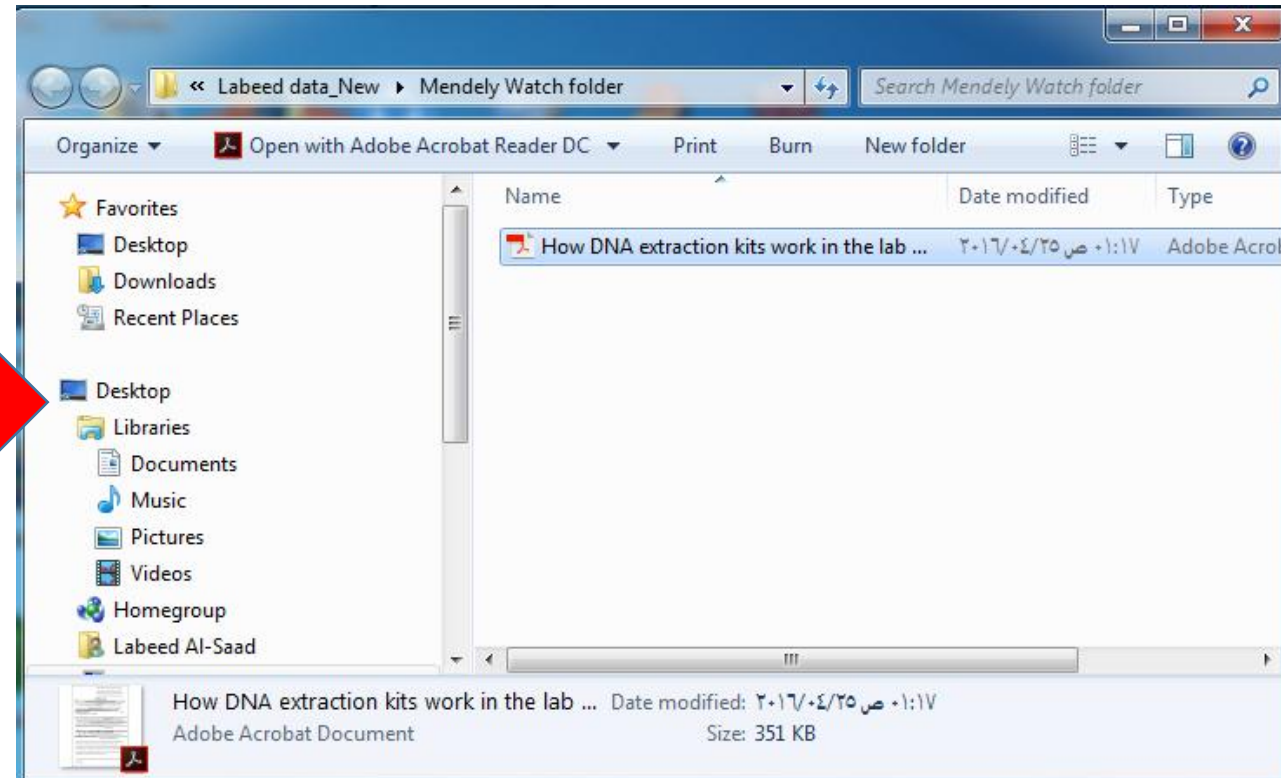
How to create Watch Folder ?

- ❖ Create a folder in (anywhere of your hard drive) and give it name for example “Mendeley watch folder”.
- ❖ In the desk top Mendeley window, go to file menu > Watch Folder > Brows to the folder that you create “mendeley watch folder” > point the checkbox > apply > OK.



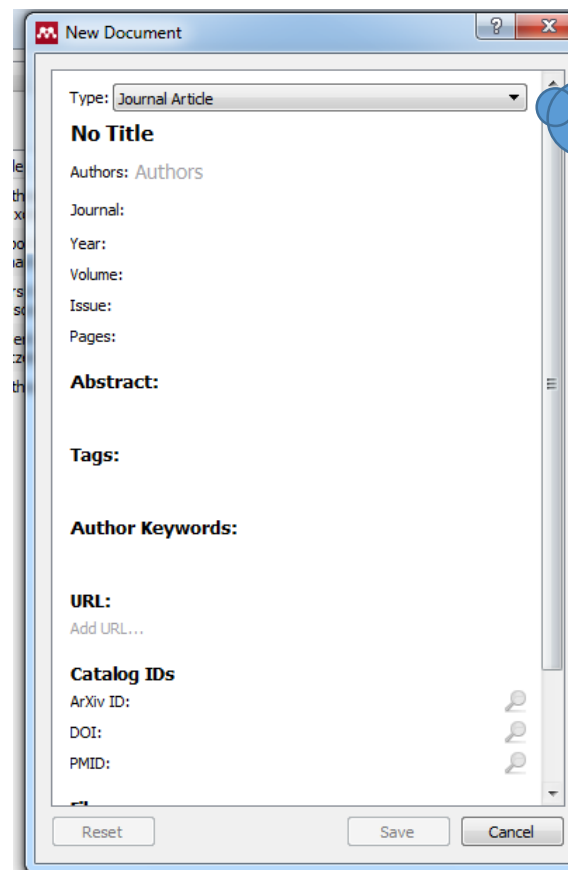
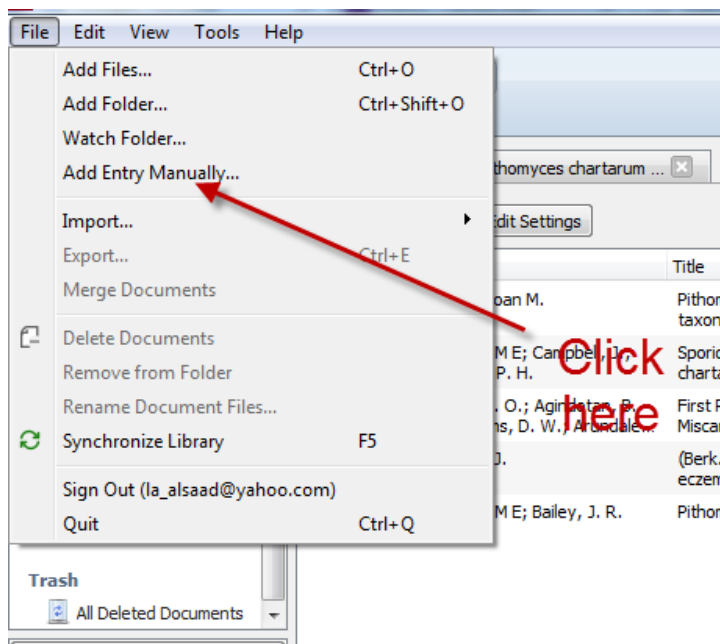
Build your Library

- ❖ The simplest way is to add the pdf file directly to the “Mendeley watch folder”, the reference will be automaticall added to the desk top Mendeley version.
- ✓ Hint: you can create desktop shortcut to the “Mendeley watch folder” for easy adding files.



Build your Library

❖ Build your library manually: Go to file menu> Add Entry Manually> fill the list.

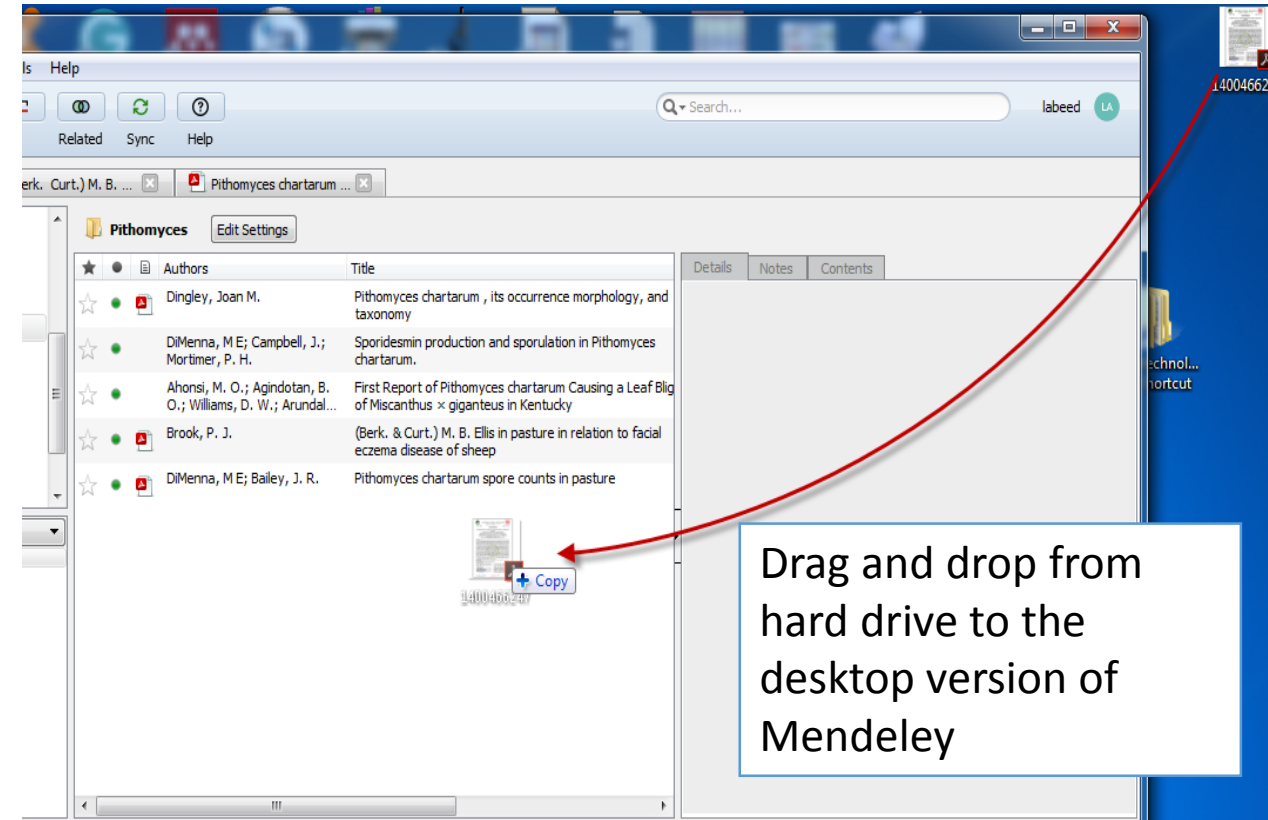


You have to be sure that you selected the right type of reference (Journal Article, Book, Review Article...etc.) as the required information changed according to selected type

Build your Library

❖ Build your library by drag and drop a pdf to create a reference.

- Previously saved pdf's are easily imported into Mendeley.
- Open the folder for these pdf's in a new screen, now drag-and-drop the pdf from the folder to the middle pane of the Mendeley desktop library.



Build your Library

- ❖ Build your library by Importing references with the help of the save to Mendeley button from for example Elsevier, Web of Science, ACM or Wiley online library. The first time in any session you want to import a reference you will be asked to sign in with your Mendeley account. Some examples and notes below.

The screenshot shows a ScienceDirect article page for "Bioimprinting as a tool for the detection of aflatoxin B1 using a capacitive biosensor". A red circle highlights the "Download PDF" button. A "Web Library" popup window is open, showing the article details and a "Save" button. A red arrow points from the text "Click this bottom" to the "Save" button. Another red arrow points from the text "This window will appear and it will automatically retrieve information" to the popup window.

ScienceDirect

Click this bottom

Download PDF Export

ELSEVIER

Bioimprinting as a tool for the detection of aflatoxin B1 using a capacitive biosensor

Alvaro V. Gutierrez R. ^{a, b}, Martin Hedström ^{a, c}, Bo Mattiasson ^{a, c}

<https://doi.org/10.1016/j.btre.2016.05.006>

Under a Creative Commons license

Get rights and content

This window will appear and it will automatically retrieve information

Web Library

Pithomyces x Save

Download PDFs if available

Journal Article

Bioimprinting as a tool for the detection of aflatoxin B1 using a capacitive biosensor

Biotechnology Reports

2016 vol: 11 pp: 12-17

DOI 10.1016/J.BTRE.2016.05.006

ISSN 2215-017X

Date Accessed: 2017-10-03

URLS

www.sciencedirect.com/science/article/pii/S2215017X1630025X

Are these details wrong? Let us know

Feedback

Build your Library

← → ↻ 🏠 Secure | https://scholar.google.com/scholar?as_ylo=2017&q=Sporidesmin&hl=en&as_sdt=0,5 ☆

Apps ★ Bookmarks 📄ahrain :: الصفحة الرئيسية 📡 http://192.168.0.20/ 📄 Imported From Firefox 📄 Visa4UK :: Print Online 📄 Molecular 📄 PhiSingn tool 📄 journals 📄 أدوات معالجة الاستلال » 📄 Other bookmark

страничка проекта Sci-Hub в социальных сетях →

Google Scholar 🔍

Articles About 36 results (0.06 sec)

Any time
 Since 2017
 Since 2016
 Since 2013
 Custom range...

Sort by relevance
 Sort by date

include patents
 include citations

Create alert

Pseudopithomyces chartarum associated with wheat seeds in Argentina, pathogenicity and evaluation of toxigenic ability [P]
 A Perelló, M Aulicino, SA Stenglein, R Labuda... - European Journal of ..., 2017 - Springer
 ... It has been reported that some P. chartarum isolates produce a hepatotoxic mycotoxin named **sporidesmin** (Houbraken et al. ... **Sporidesmin** production by Pithomyces chartarum isolates from Australia, Brazil, New Zealand and Uruguay. ...
 ☆ 🔄 Related articles All 4 versions

Both canonical and noncanonical Wnt signalling may be required for detoxification following ETP class mycotoxin exposure
 J Zhang, Z Pan, A Sheppard - Toxicology Letters, 2017 - Elsevier
 ... 2017. Highlights. • Exposure to the ETP class mycotoxin **sporidesmin** A induces CYP2C detoxification genes. • ... mechanisms. Keywords. Mycotoxin; **Sporidesmin** A; Wnt signalling; CYP450; miRNA; Detoxification. 1. Introduction. ...
 ☆ 🔄 Related articles All 3 versions

Variability in measurement of Pithomyces chartarum spore counts
 EL Cuttance, RA Laven... - New Zealand Veterinary ..., 2017 - Taylor & Francis
 ... Introduction. Facial eczema (FE) is a seasonal hepatogenous photosensitisation of ruminants and camelids caused by the ingestion of fungal spores containing the hepatotoxin **sporidesmin**. ...
Sporidesmin production and sporulation in Pithomyces chartarum. ...
 ☆ 🔄 Related articles All 2 versions

Sci-Hub 🔍
 URL статьи или журнала, или DOI, или строка для поиска

Web Library ✕

All Pithomyces ✕ Save all

Download PDFs if available

Pseudopithomyces chartarum associated with wheat seeds in Argentina, pathogenicity and evaluation of toxigenic ability
 Perelló A, Aulicino M, Stenglein S, et. al.
 European Journal of Plant Pathology, 2017
[Details >](#)

Variability in measurement of Pithomyces chartarum spore counts
 Cuttance E, Laven R, Stevenson M
 New Zealand Veterinary Journal, 2017
[Details >](#)

Animal physiology and genetic aspects of ryegrass staggers in grazing sheep
 Morris C, Wheeler T, Henderson H, et. al.
 New Zealand Veterinary Journal, 2017
[Details >](#)

Asymmetric Synthesis of Chiral α -

Build your Library

- ❖ When metadata could not be detected, you have to enter it manually.

The screenshot shows a Google Books search result for "Plant pathology". The main content area displays the book cover for "PLANT PATHOLOGY" by MEHROTRA, Second Edition. The cover features a photograph of a tree trunk and autumn foliage. The title "PLANT PATHOLOGY" is prominently displayed in large white letters at the bottom of the cover.

On the right side, a "Web Library" dialog box is open, showing a form for manual metadata entry. The form includes the following fields:

- TYPE:** Web Page
- TITLE:** PLANT PATHOLOGY - MEHROTRA - Google
- AUTHORS:** (Empty field)
- ABSTRACT:** (Empty text area)
- DETAILS:**
 - Publication: (Empty field)
 - Year: (Empty field)
 - Pages: (Empty field)
 - Date Accessed: 2017-10-03
- CATALOG IDS:** (Empty field)

The dialog box also contains a "Save" button and a message: "Bibliographic metadata could not be detected. Create metadata below to enhance the quality of this resource."

Build your Library

❖ Import all (or a selection of) references from your Endnote database

1. In EndNote, select the references that you want to import into Mendeley Desktop, and click File > Export.
2. In the window that appears, there is a box labeled 'Files of type:', in that box select 'XML (*.xml)'.
3. Choose a name for the file and click the 'Save' button.
4. Open Mendeley Desktop and click Add Files.
5. Select the file which you exported from EndNote and click Open.