

Inflammation

SUMMARY OF MAIN POINTS OF ACUTE INFLAMMATION

- Rapid response of living tissue to any injury.
- Naked eye (Macroscopic): Redness, swelling, heat, pain & loss of function.
- Microscopic: Vascular dilatation, exudate leaks into tissues, neutrophils emigrate.

What is chronic inflammation?

May 'take over' from acute inflammation, if damage is too severe to be resolved within a few days.

Most important characteristic is the **type of cell present**.

Macrophage , Lymphocyte, Plasma cell, Eosinophile & Fibroblast.

Giant' Cells

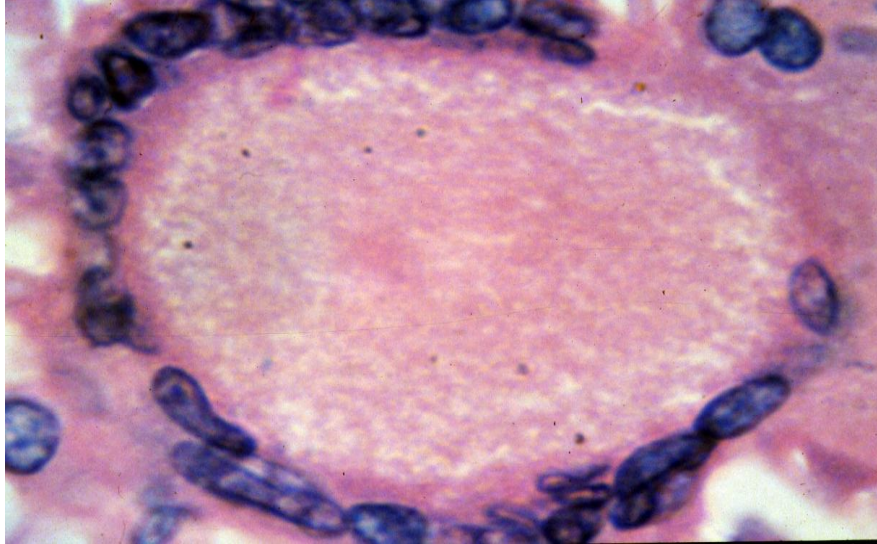
Multinucleate cells made by fusion of macrophages. Several types.

*Langhans type giant cell – Tuberculosis

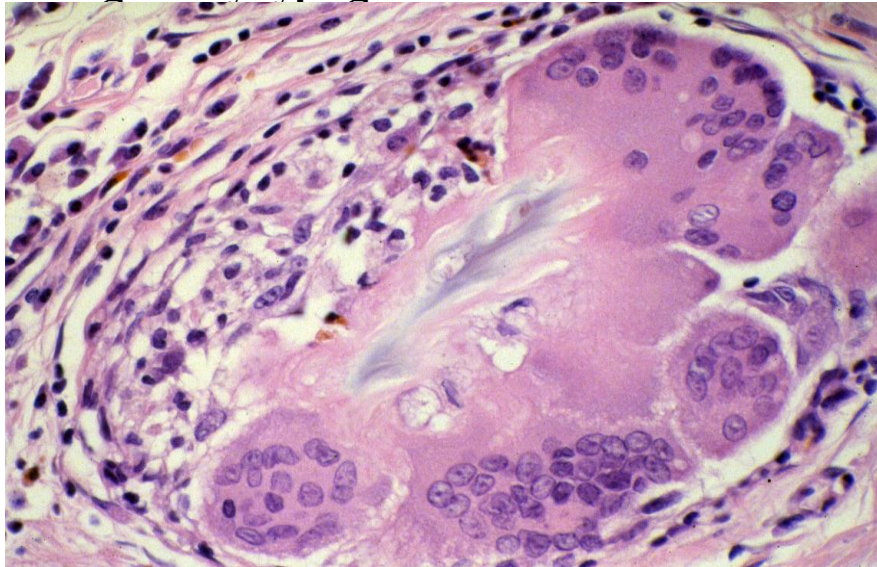
*Foreign body type giant cells

Types of giant cells:

Langhans type giant cell – Tuberculosis



Foreign body type giant cells



EFFECTS OF CHRONIC INFLAMMATION

Fibrosis , impaired function & atrophy.

Tuberculous granuloma

