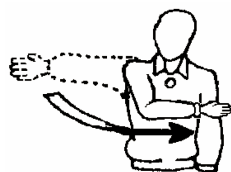


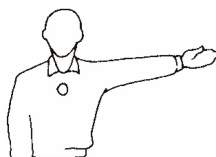
# Volleyball Referee Hand Signals

The following contains descriptions of the Official FIVB (International Volleyball Federation) Referee's hand signals that we will be using. It is easy and well worth the effort for any player to learn these basic hand signals. Basics to remember are:

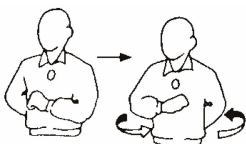
- All one-handed signals are made with the hand toward the side of the team which made the error or request
- Immediately after a rally is over, the hand signal "Team to Serve" and a point is always indicated FIRST to the team who earned the next service and point
- Next, the hand signal explaining the reason why (or what the game/ball fault is) is indicated



**AUTHORIZATION TO SERVE**  
Move the hand to indicate the direction of serve



**TEAM TO SERVE**  
Extend the arm to the side of team that will serve



**CHANGE OF COURTS**  
Raise the forearms front and back and twist them around the body



**TIME-OUT**  
Place the palm of one hand over the fingers of the other, held vertically  
(i.e. generally for 30 seconds)



**SUBSTITUTION**  
Circular motion of the forearms around each other



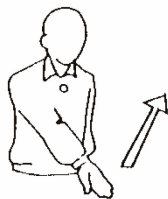
**MISCONDUCT PENALTY OR EXPULSION**  
Show a yellow card for penalty.  
Show a red card for expulsion



**END OF (SET) MATCH**  
Cross the forearms in front of the chest, hands open



**DISQUALIFIED**  
Show both cards together for disqualification



**BALL NOT TOSSED OR RELEASED AT THE SERVICE HIT**  
Lift the extended arm, the palm of the hand facing upwards



**DELAY IN SERVICE**  
Raise eight fingers, spread open  
(i.e. the server has taken more than 8 seconds to serve the ball which is a service fault)



**BLOCKING FAULT**

Raise both arms vertically, palms forward



**POSITIONAL OR ROTATION FAULT**

Make a circular motion with the forefinger



**BALL "IN"**

Point the arm and fingers towards the floor



**BALL "OUT"**

Raise the forearms vertically, hands open, palms towards the body



**CATCH OR LIFT**

Slowly lift the forearm, palm of the hand facing upwards



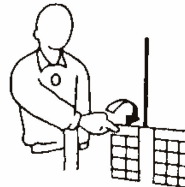
**DOUBLE CONTACT**

Raise two fingers, spread open



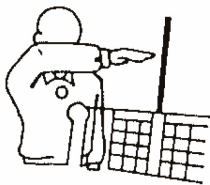
**FOUR HITS**

Raise four fingers, spread open



**NET TOUCHED BY A PLAYER**

Indicate the respective side of the net



**REACHING BEYOND THE NET**

Place a hand above the net, palm facing downwards



**ATTACK HIT FAULT**

Make a downward motion with the forearm, hands open



**PENETRATION**

Point to the centre line



**DOUBLE FAULT & REPLAY**

Raise both thumbs vertically



**BALL TOUCHED**

Brush with the palm of one hand the fingers of the other, held vertically

Warning



**DELAY WARNING**

Cover the right wrist with open left hand, palm facing referee (warning) or point the wrist with a yellow card (penalty)