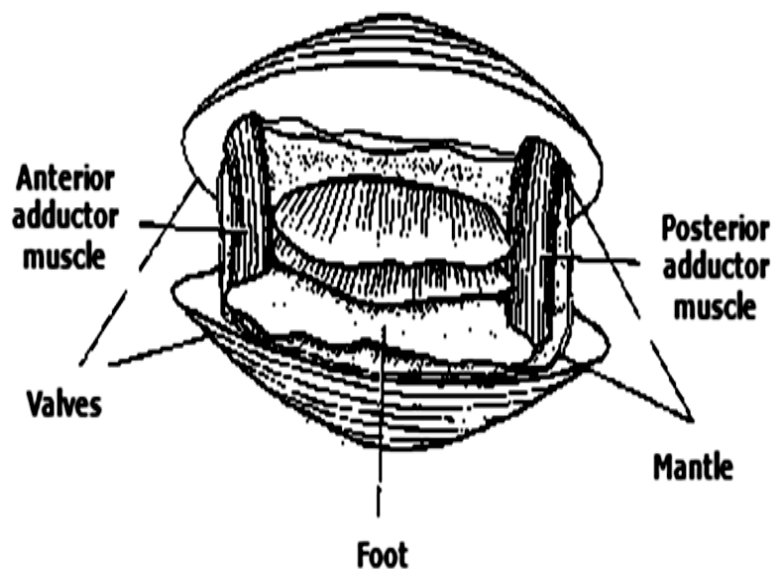
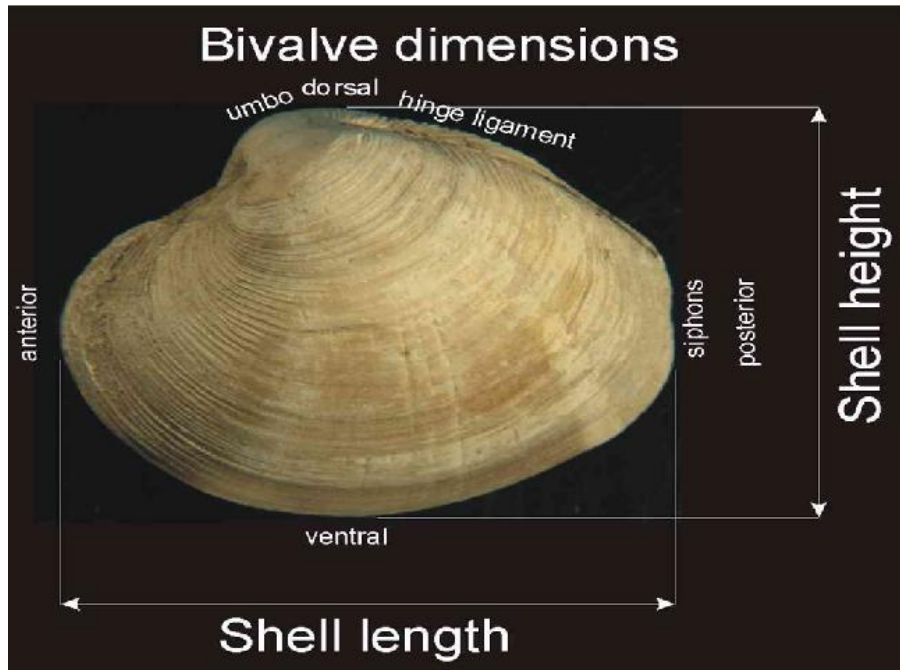


Mollusca Phylum :

Pelecypoda Class:

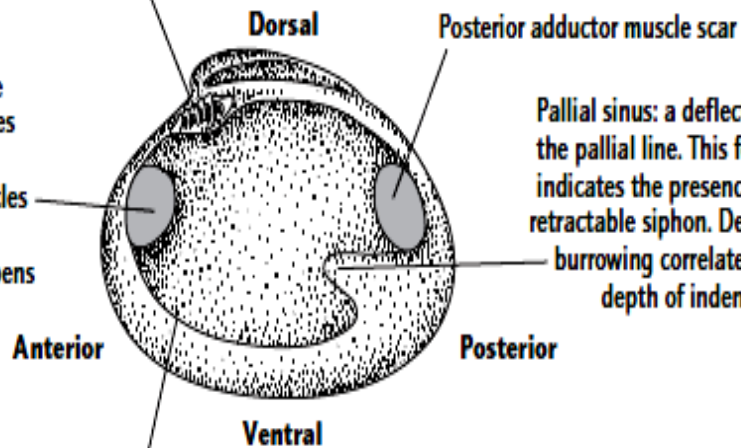
Preparation by

Bushra M. Issa



Tooth and sockets: located on the hinge plate. These structures fit into their inverse on the other valve to insure that the valves fit tightly and securely

Anterior adductor muscle scar: the adductor muscles actively hold the valves together. When the muscles relax the hinge ligament expands and the shell opens

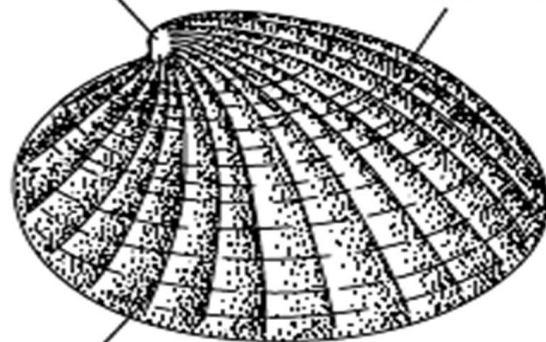


Pallial sinus: a deflection in the pallial line. This feature indicates the presence of a retractable siphon. Depth of burrowing correlates with depth of indentation

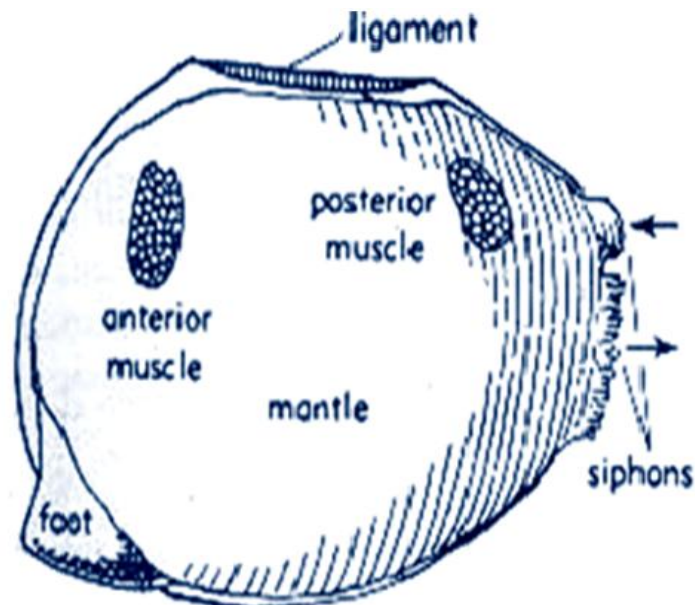
Pallial line: line that marks the attachment of the mantle to the shell

Umbo: earliest formed part of the shell

Growth line: each line marks the earlier position of the shell edge



Rib (costa): strengthens shell. In burrowing bivalves



1- Shell Orientation

A-The Beak is Prosogyrate:

1- Put the shell in which the beak to up that in dorsal side,the opposite side(lower)is ventral side.

2- Put the coiling of beak on repose of the shell holding thumb and posterior side near from seer,subsequent,the valve on right -hand is the **right valve** and the valve on left-hand is the **left valve**.

B-The beak is Opisthogyrate or Orthogyrate:

1-Can recognition the posterior side from :

a-Pallial sinus.

b-Muscle Scar: when dimyarian are anisomyarian, the big scar to be on posterior side.while one scar always found in posterior side.

c-Lunule found in anterior side that one the opposite side is posterior side.

2-Description Points :

1.Genus Name:

2.Geological Age:

3.Shell Shape: contain three points are:

a- **Edge Type**

	Acrenulata
	Crenulata

b- **Morphology**

	Tetragonal
	Concentric
	Globular
	Triangular

c- **Convex degree**

	Convex
	Plane

4.Muscle Scar : a- Monomyarian.

b- Dimyarian

	Isomyarian
	Anisomyarian

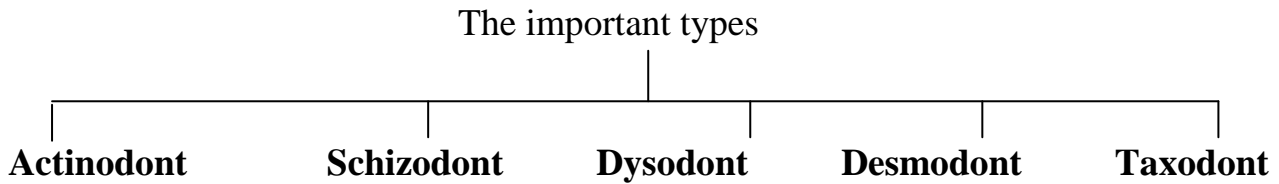
5.Beak Type : a-Prosogyrate.

b-Opisthogyrate.

c-Orthogyrate.

6.Teeth Type : a-Cardinal teeth:found directly under the Beak.

b-Lateral teeth



7.Ornamentation : a. Smooth, have not any ornamentation.

b.Ornamented, the types are:

1-Costate :have only costae .

2-Lamellate :have only growth lines .

3-Reticulate :have costae and growth lines

4-Spinose :have spines .

5-Pitted :have pits .

6- Crenulate :have nodes .

Classification:

Kingdome:Animalia

Phylum:Mollusca

Class:Pelecypoda

Subclass:Palaeconcha

