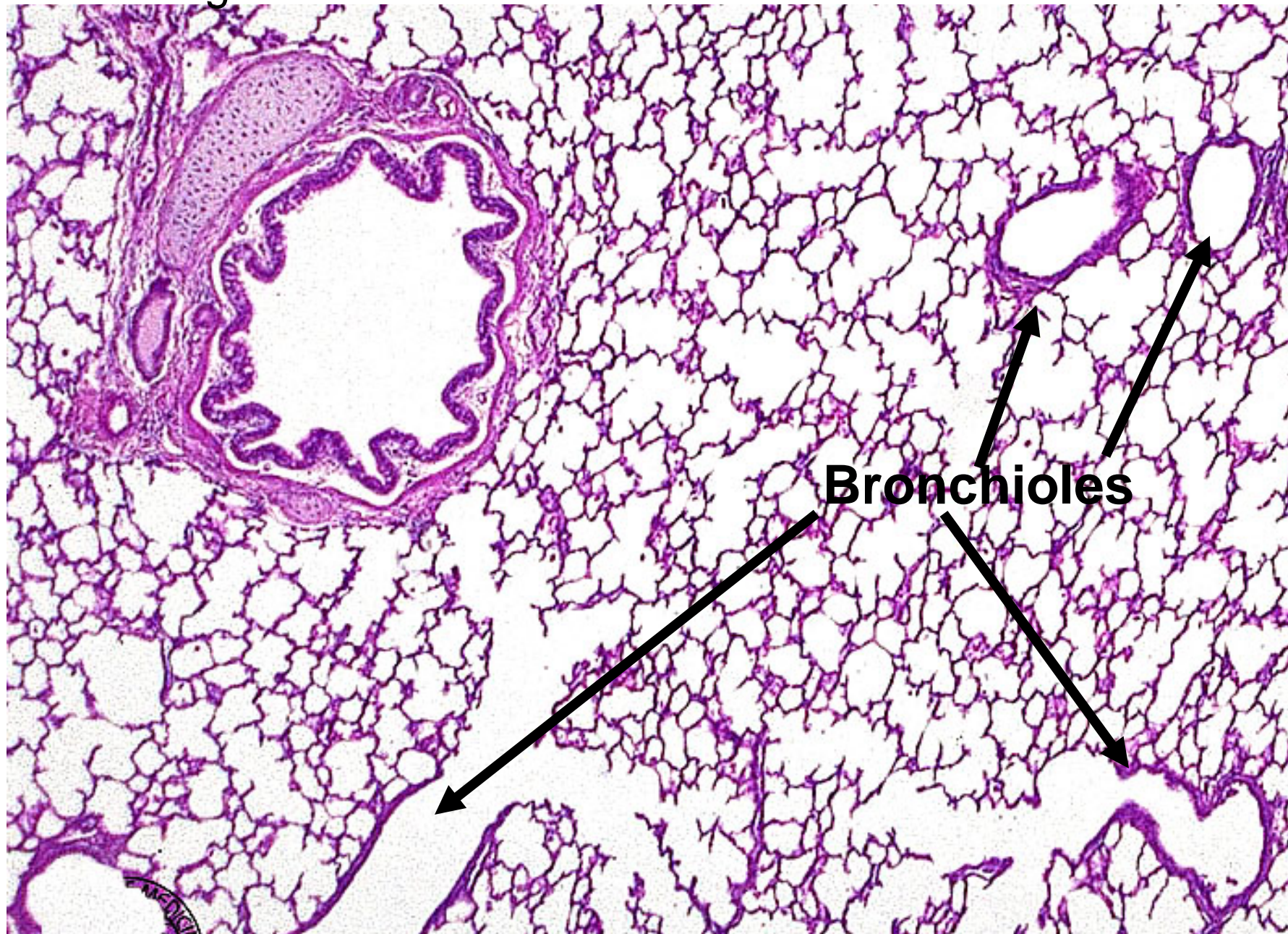


# Lung broncheal tree

- **1-Bronchus**
- a-mucosa;ps.st.ci.col.+goblet cell.lamina propria athin layer of elastic fibers +smooth muscle.
- b-submucosa:serous alveoli and mucous +cartilage.
- c-adventitia
- **2-Bronchioles**
- Mucosa low ps.st.ci.col.folded+smooth muscle
- +elasticfiber,no found cartilage
- **3-terminal bronchioles**
- Ciliated cuboidal or columnar
- **4-Respiratory bronchioles**.col or cub .
- **5-Alveolar ducts** conical tubes,simple sq .
- **6-Alveolar sac (2-4)** atrium.
- **7- Alveoli** its polyhedral structur separated by inter alveolar septum.

# 3° or Segmental Bronchus



**Bronchioles**