

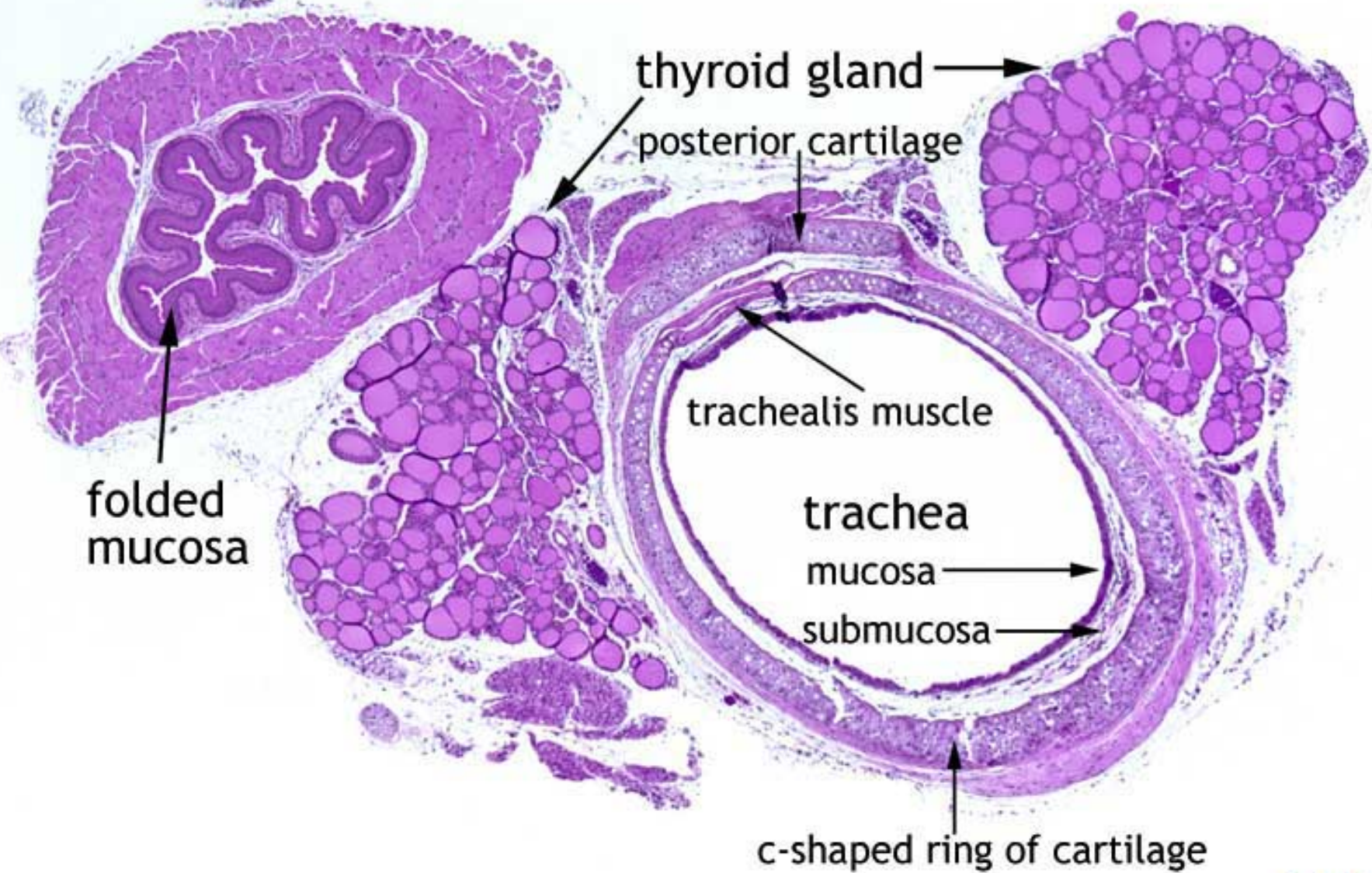
Respiratory System

**The Larynx, Trachea, and
Bronchial Tree**

Trachea

- 1-mucosa
 - a-ps.st ci.co.epi
+goblet cell
 - b-lamina propria:elastic fiber c.t +lymphatic
tissue.
- 2-submucosa:mixed glands
- 3-hyaline cartilage.
- 4-adventitia:supply with b.v +nerve
- 5-trachealis muscle:smooth muscle connect the
ends of cartilage.

esophagus



folded
mucosa

thyroid gland

posterior cartilage

trachealis muscle

trachea

mucosa

submucosa

c-shaped ring of cartilage

Trachea - Mucus Membrane

