

Respiratory system

Olfactory mucosa

Mucosa

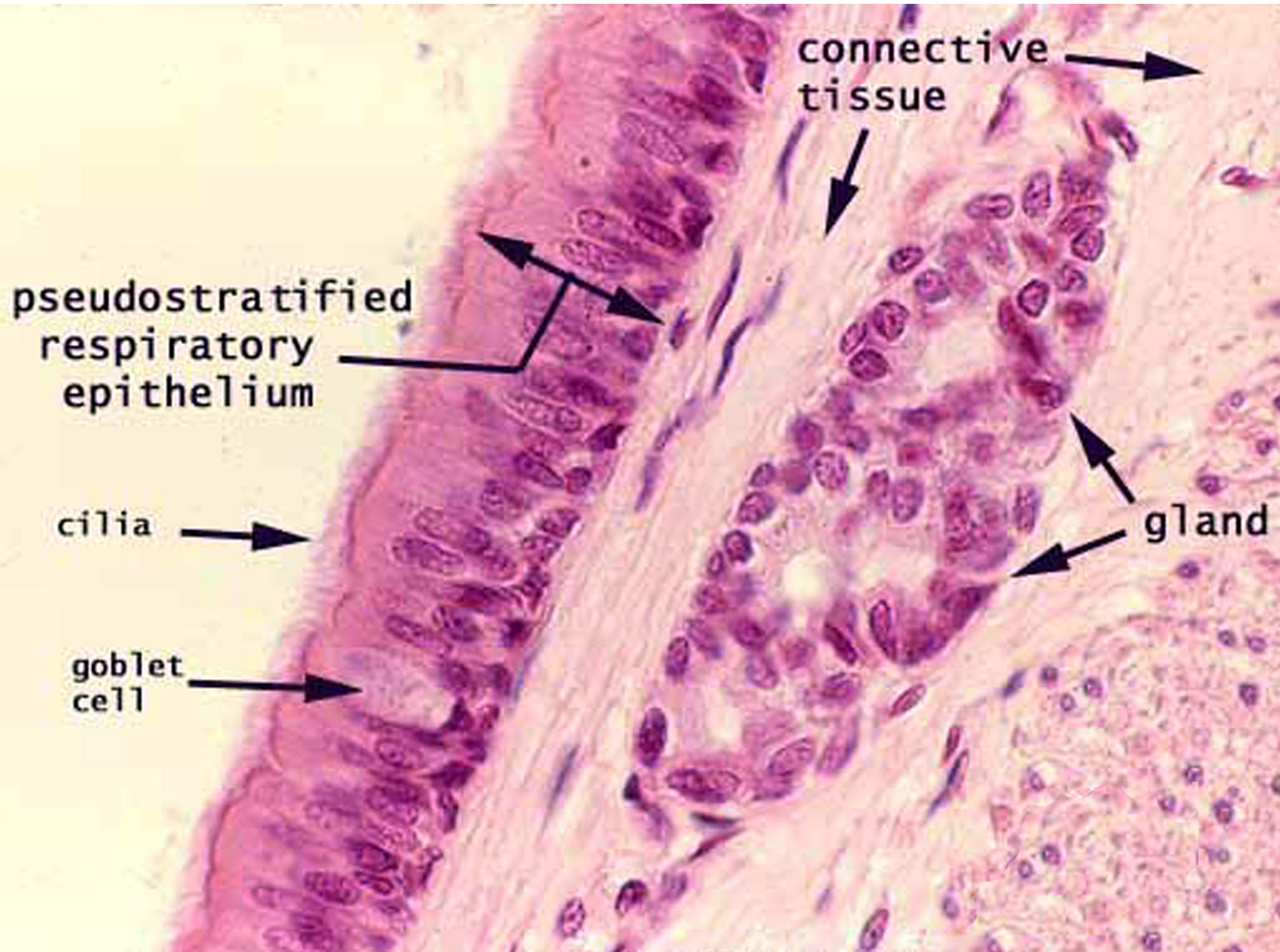
a-pseudostratified ciliated
columnar epithelium

b-lamina propria ;loose c.t and
olfactory gland(bowman's gland)

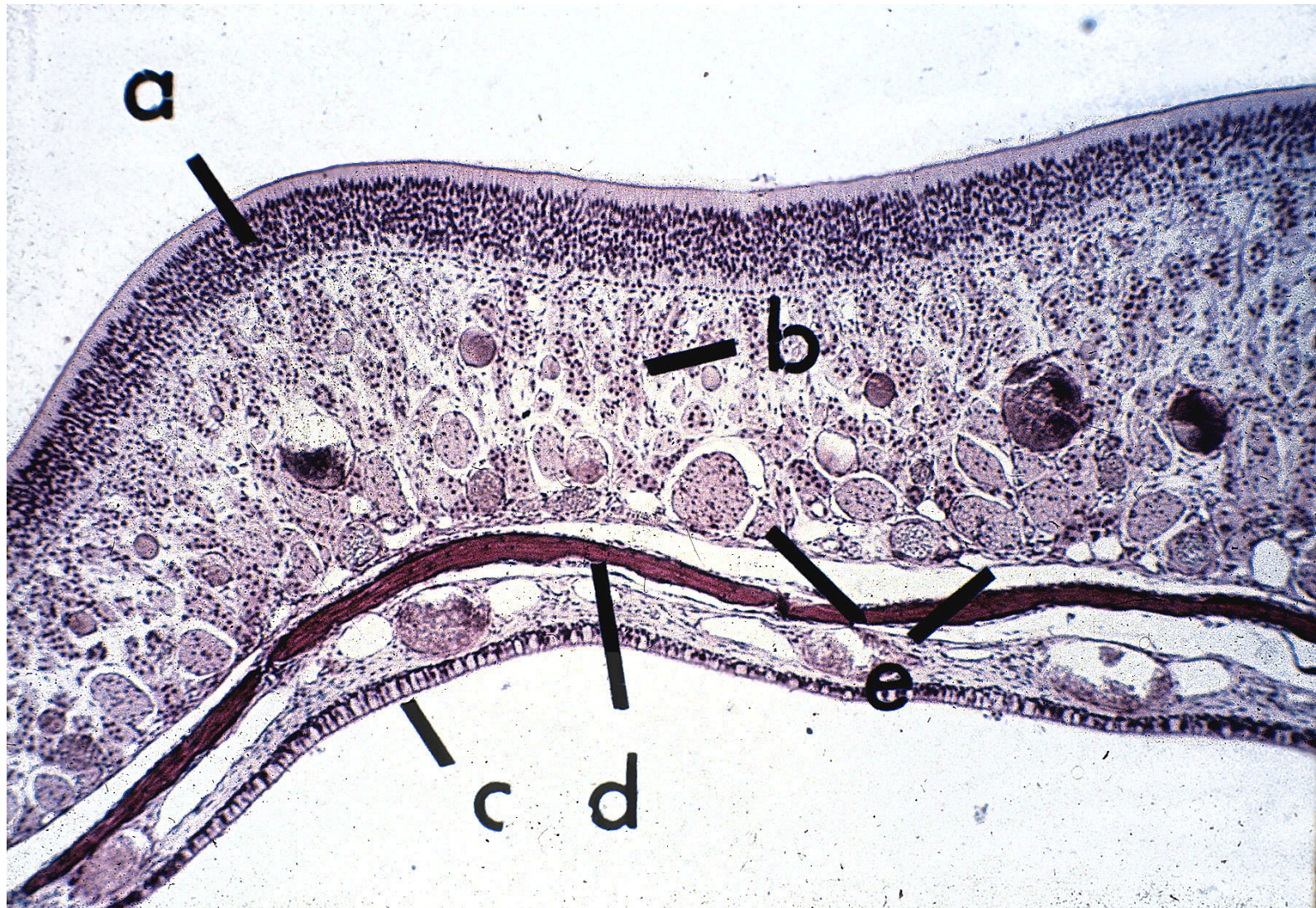
olfactory nerve (filaolfactoria)

bone is merge in lamina propria

Respiratory Mucus Membrane



Respiratory Olfactory Epithelium (a) with lamina propria (b) w/ Glands of Bowman



Below the bone (d) is Respiratory Epithelium (c)

Olfactory Epithelium

Sustentacular cells

Olfactory receptor cells

Basal cells

