

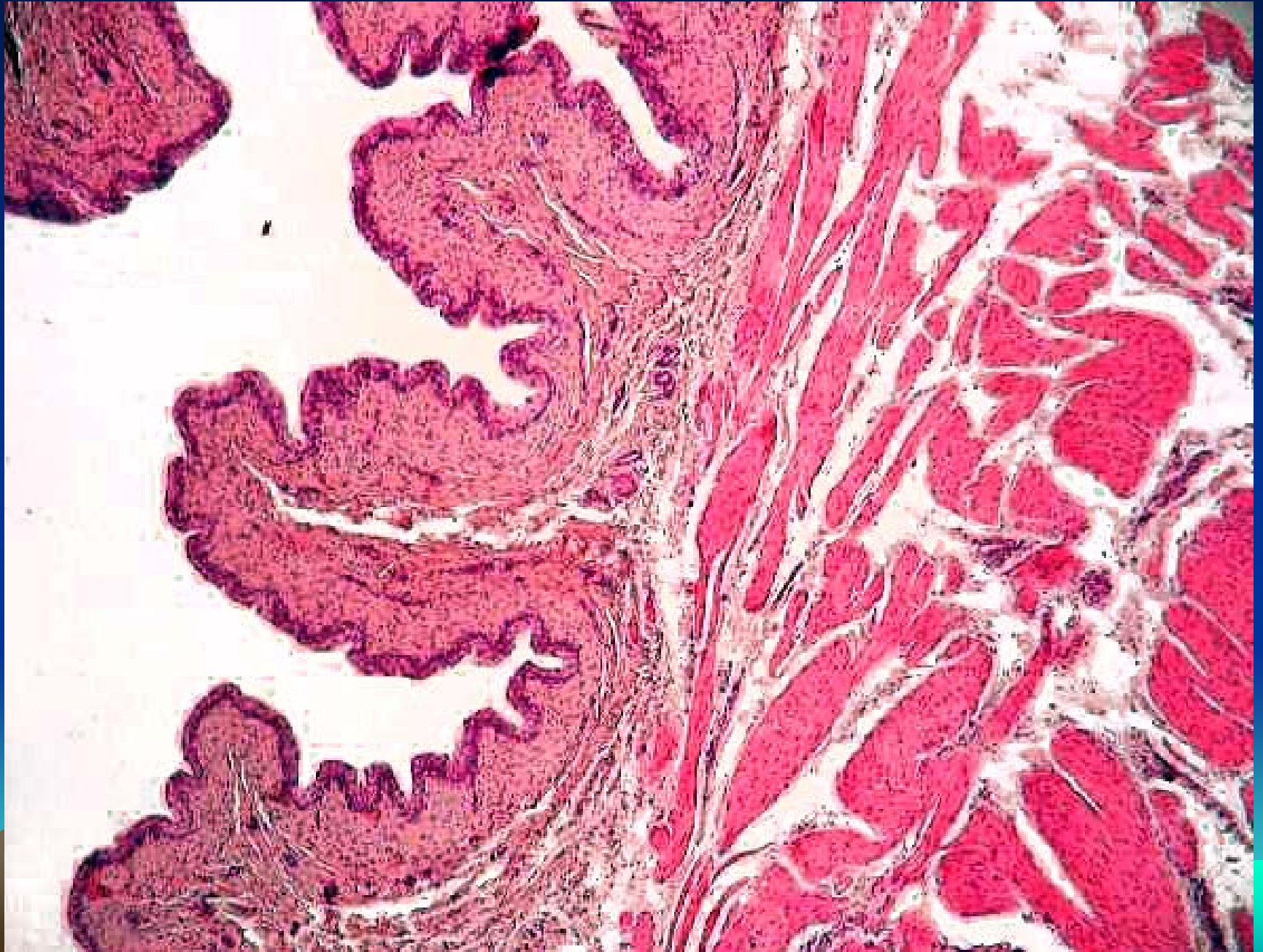
- **Ureter**
- Composed of mucosa transitional epithelium
- Lamina propria wide region of fibro elastic c.t
- Muscularis externa :inner longitudinal and outer circular.
- Adventitia: fibro-elastic c.t
- .
- **Urinary bladder**
- Similar to Ureter except the Muscularis externa consist of three layers
- Inner, middle and outer.



# Ureter



# Bladder



# Bladder – Transitional Epithelium

