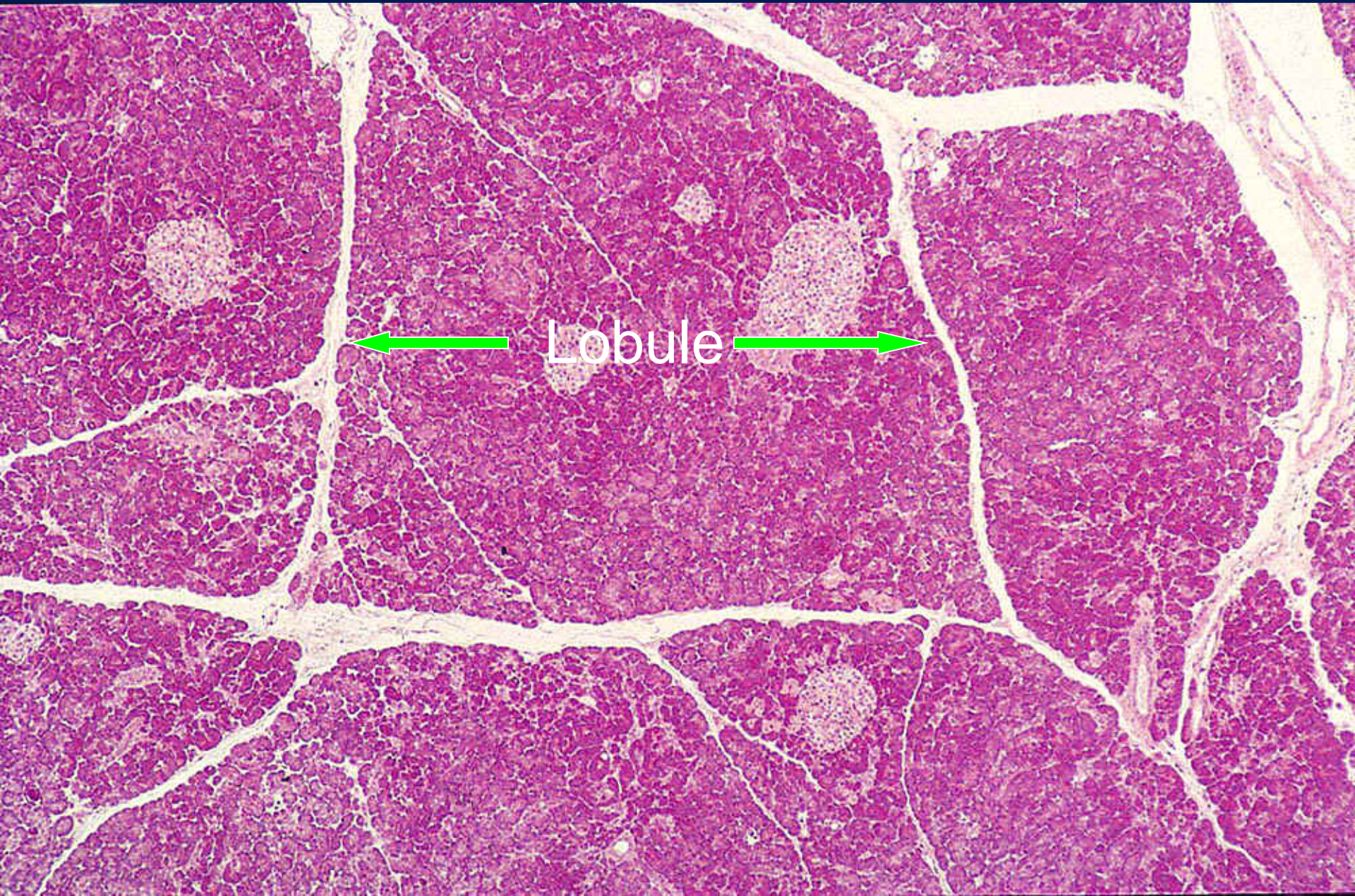


Pancreas

- 1-acini pyramid shape ,basal nuclei. •
- 2-islets of langerhans contain alpha •
cell(peripheral)secreted glucagons.
- And beta cell (in center) secreted insulin. •
- Intercalated duct-centro-acinar cell----- •
-interlobular duct.



Pancreas – Secretory acini & Islet of Langerhans



Pancreas

Intercalating Duct (D)

C – centroacinar cell

