

ANTIDIABETICS

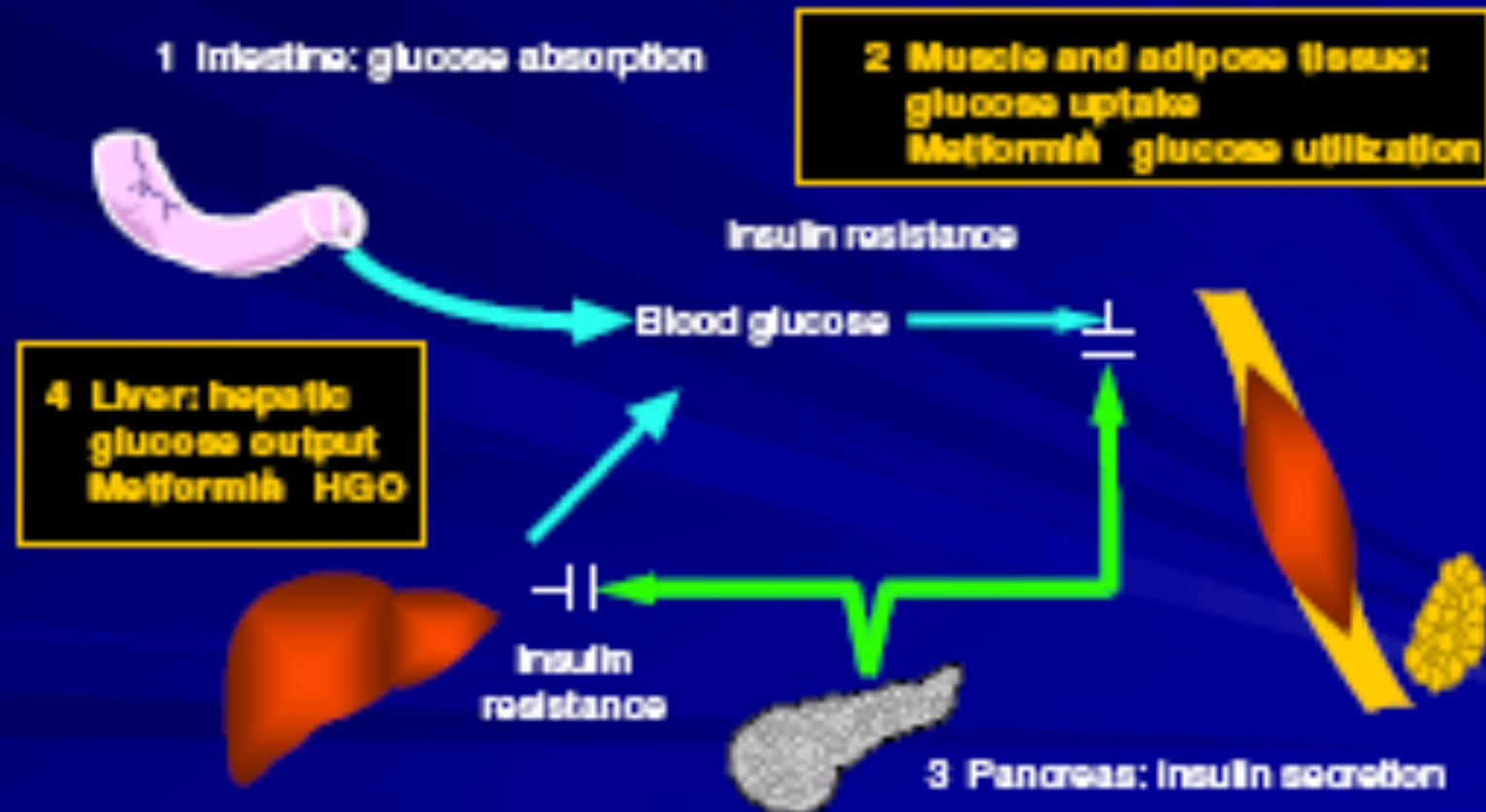
Dr. SAAD .S. HaMadi

Antidiabetic Agents: Effects on Glycemia and Potential for Cardiovascular Risk Reduction

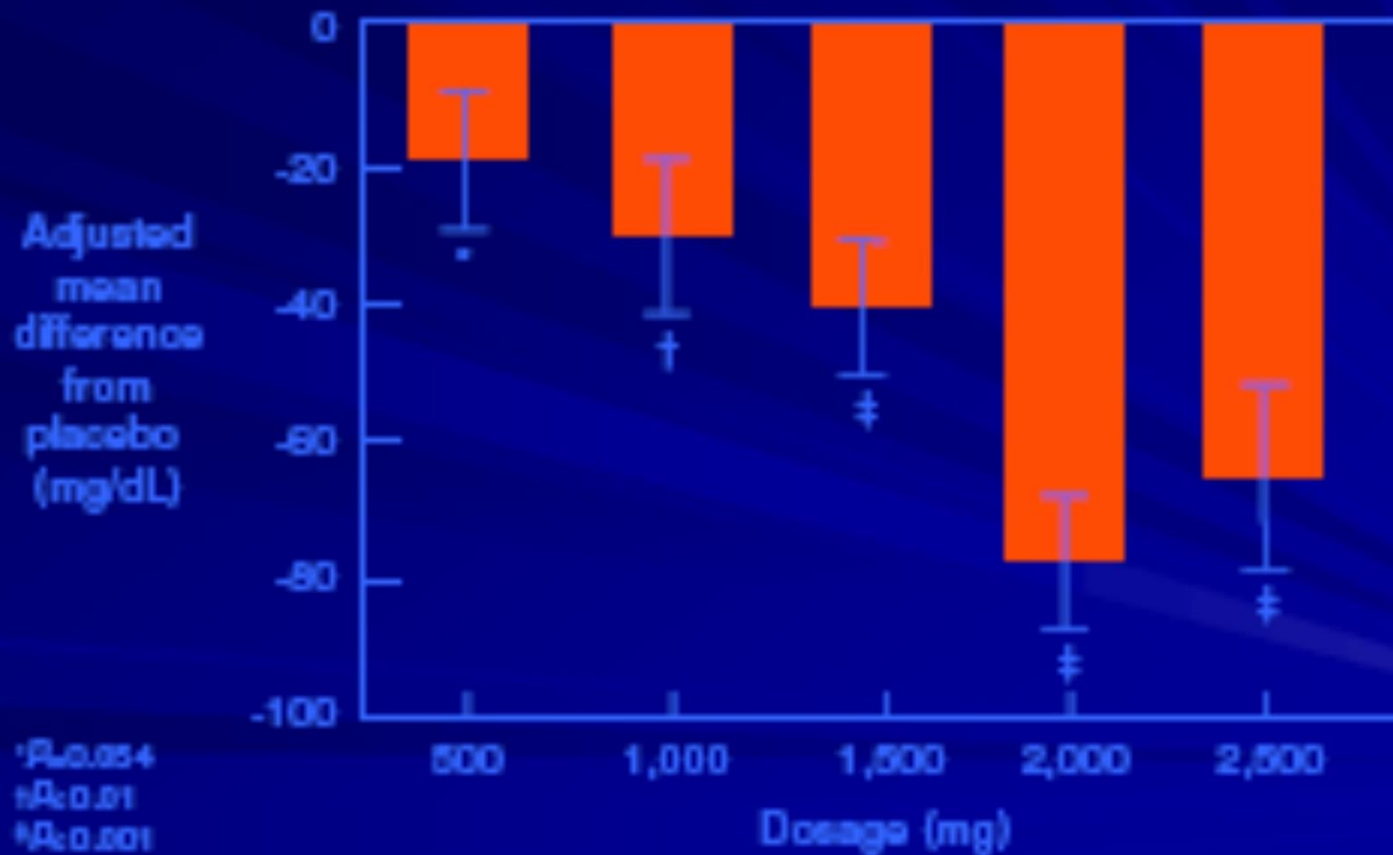




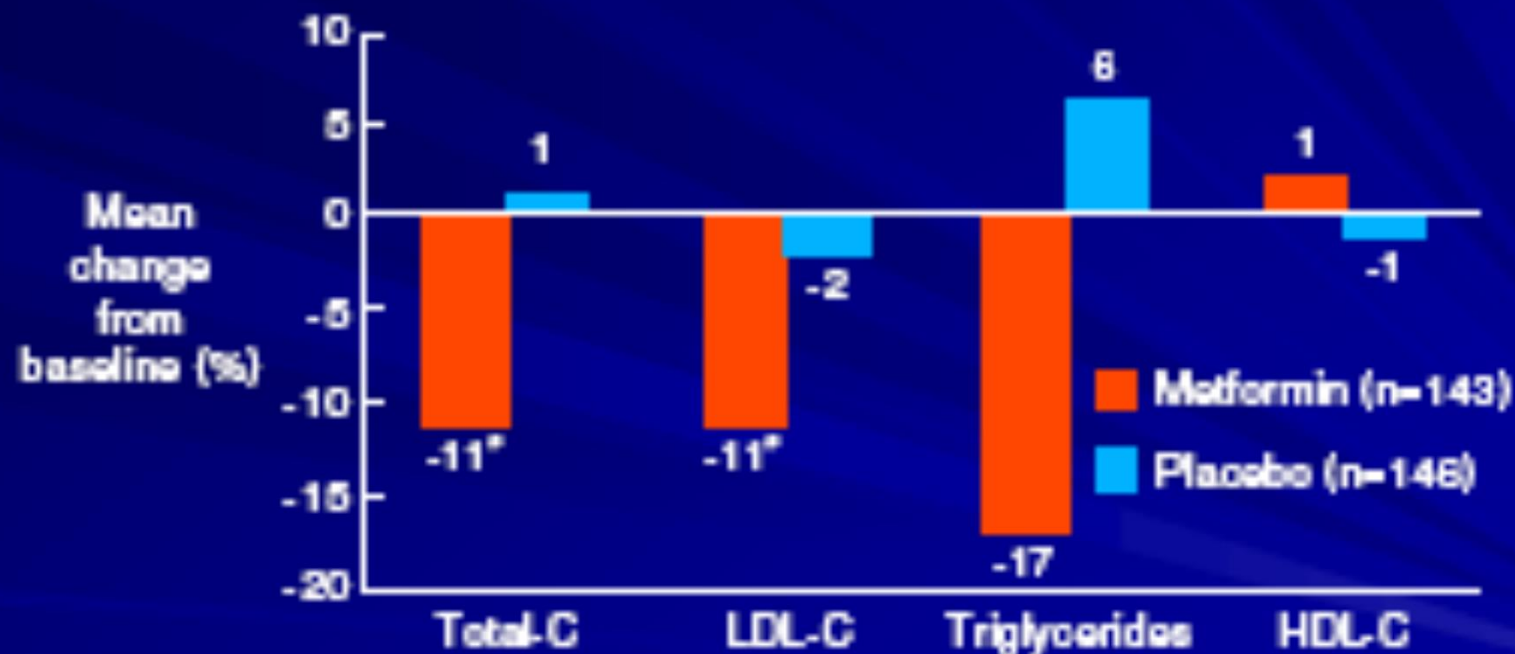
Metformin: Mechanism of Action



Effect of Metformin in Type 2 Diabetes: FPG



Metformin Monotherapy: Effects on Lipids

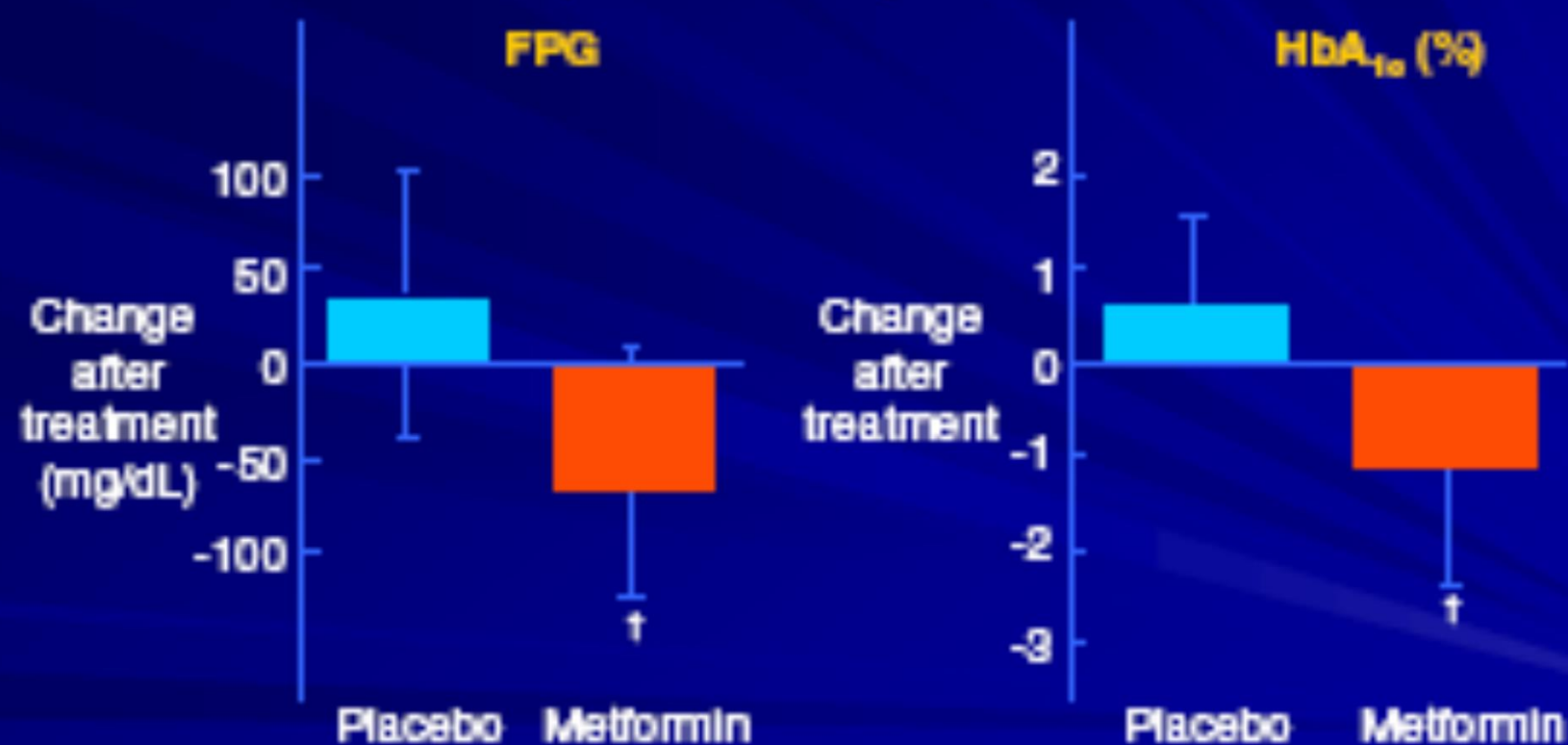


* $P < 0.05$ vs placebo

© 2003 ADA

DeFronzo RA et al. *N Engl J Med*. 1995;333:541-549.

Adjunctive Metformin Therapy in Insulin-Treated Patients With Type 2 Diabetes and Suboptimal Glycemic Control



† $P < 0.001$; mean \pm SD

© 2002 ADA

Robinson AC et al. *Diabetes Care*. 1999;22:704-708.

Metformin Prescribing Considerations



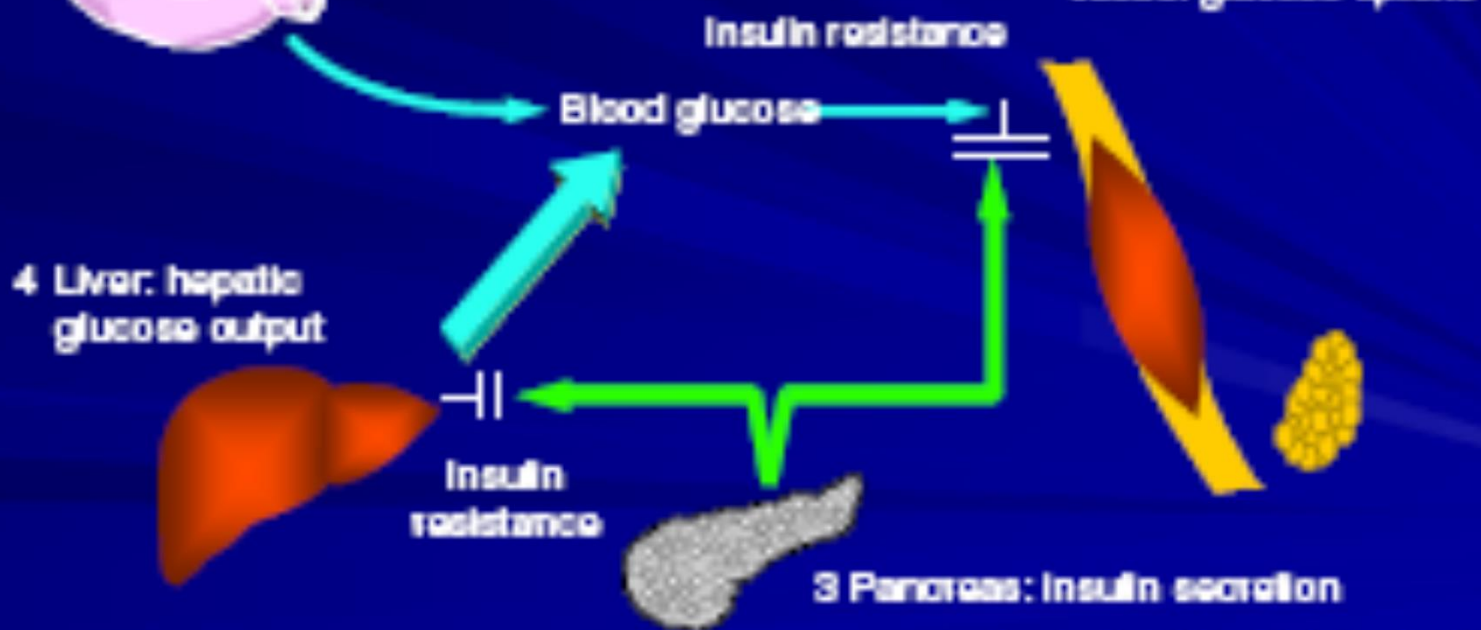
- Metformin is contraindicated in
 - renal dysfunction: serum creatinine ≥ 1.5 mg/dL (men) or ≥ 1.4 (women), or abnormal creatinine clearance
 - CHF requiring pharmacologic treatment
 - use of iodinated contrast materials for radiologic studies
 - known hypersensitivity to metformin
 - acute or chronic metabolic acidosis, including diabetic ketoacidosis
- Special warning on increased risk of cardiovascular mortality

α -Glucosidase Inhibitors: Mechanism of Action



1 Intestine: glucose absorption
Acarbose ↓ glucose absorption secondary
to ↓ digestion of carbohydrate

2 Muscle and adipose
tissue: glucose uptake





Thank you

Follow part III