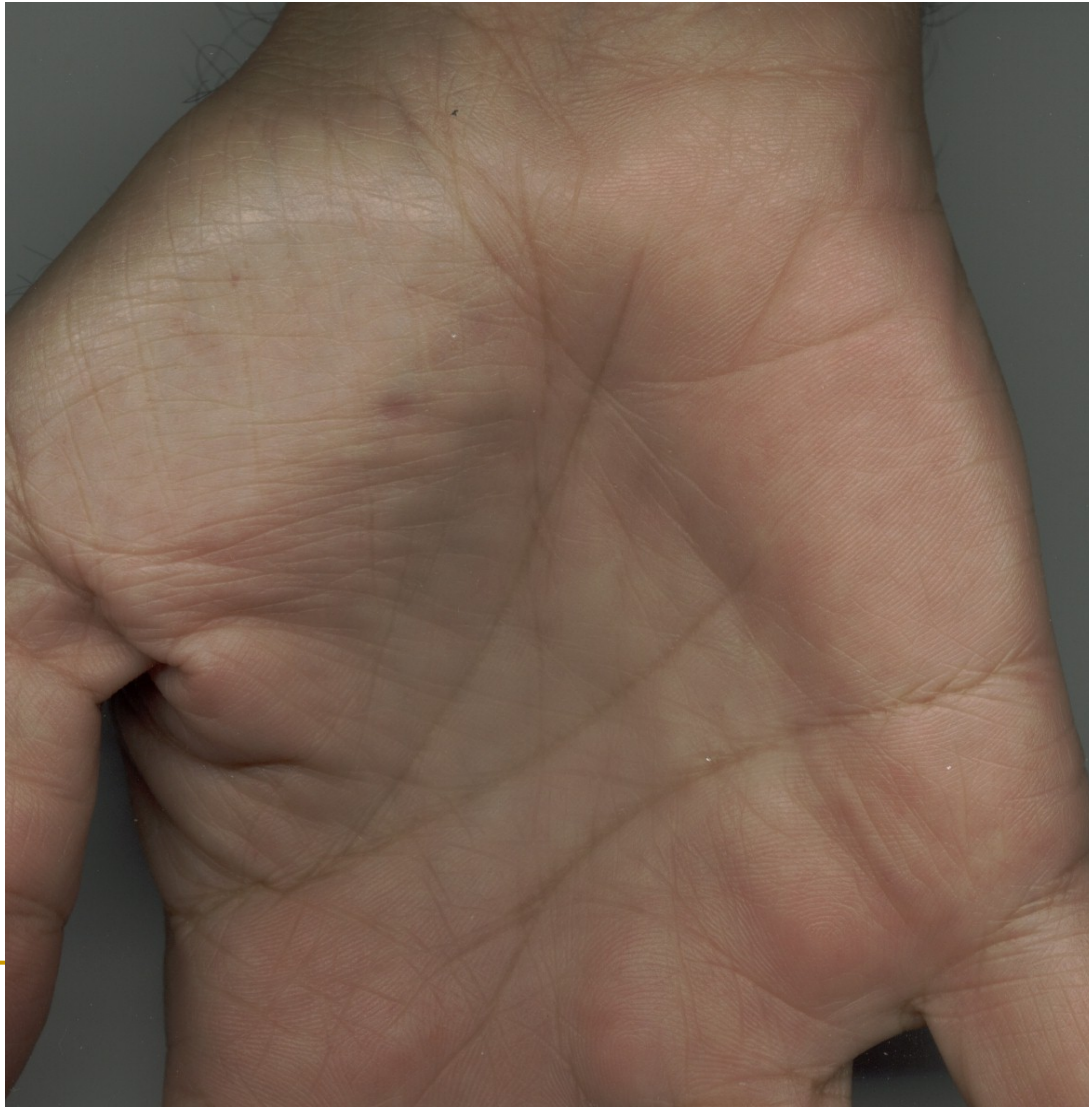

Anatomy of the hand

Dr.Ali Abdulla Al-Edan

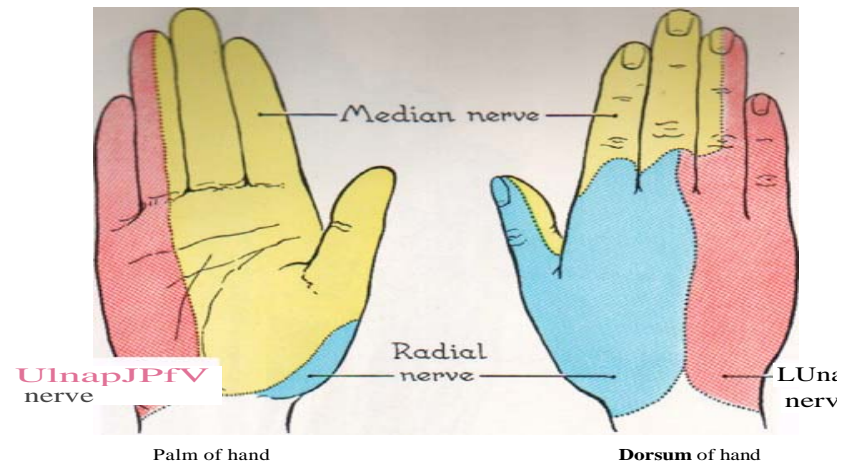
Orthopaedic surgeon

Feb. 2006

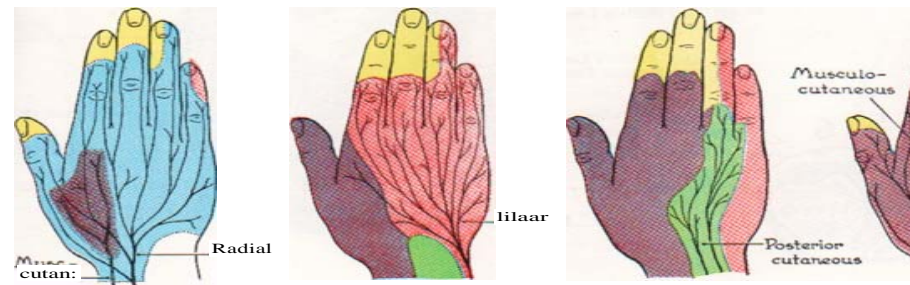
The palm



The sensation

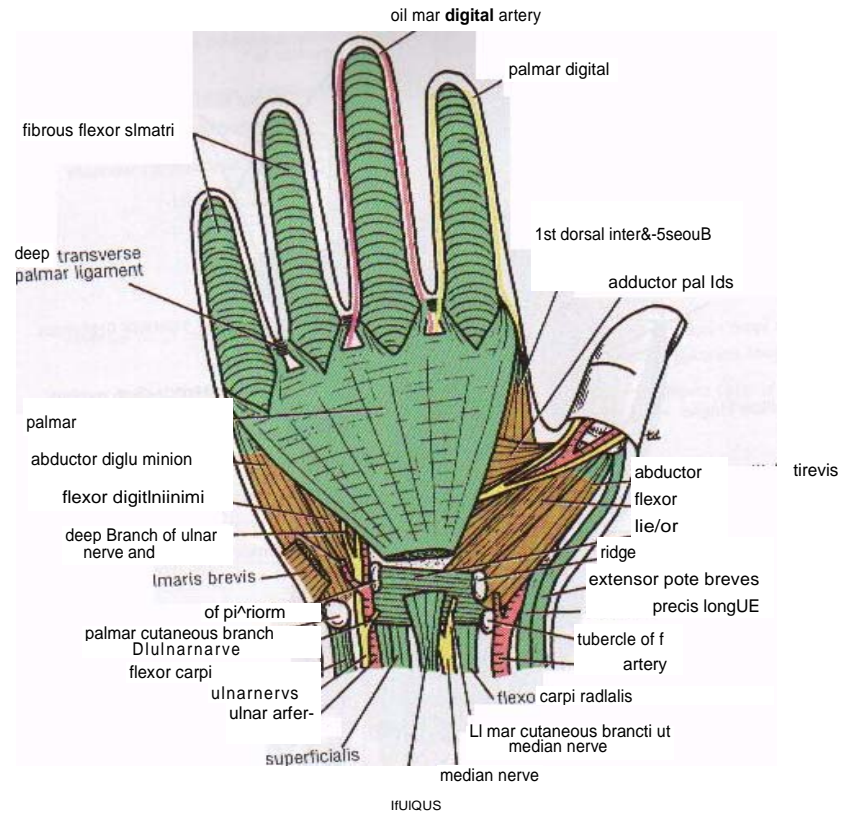


6-100 DISTRIBUTION OF CUTANEOUS NERVES TO PALM AND DORSUM OF THE HAND



6-101 VARIATIONS IN PATTERN OF CUTANEOUS NERVES IN THE DORSUM OF THE HAND

Palmar aponeurosis



Lumbrical muscles

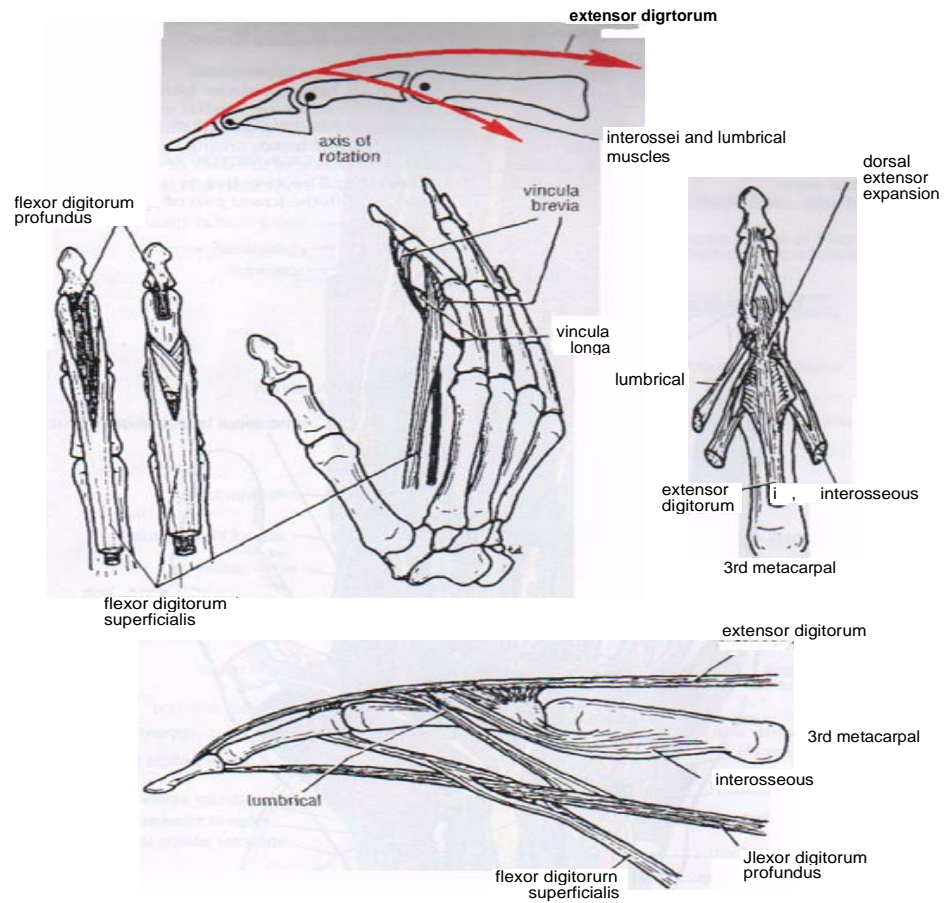
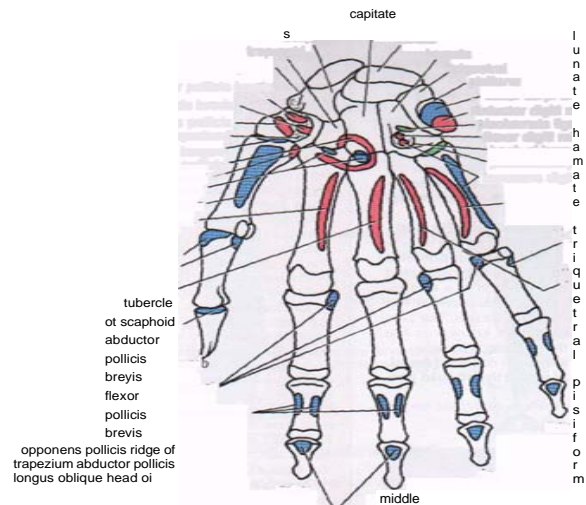


Figure 9-59 Insertions of long flexor and extensor tendons in the fingers. Insertions of the lumbrical and interossei muscles are also shown.

Palmar interossei

Cotes' tracuB.



flexor digitorum profundus **Figure 9-50** Important muscular attachmen

to the anterior surfaces of the bones of the hand.

adductor pollicis first palmar
interosseus flexor carpi radialis
opponens pollicis second palmar
interosseus

abductor and flexor
pollicis brevis adductor
pollicis and first palmar
interosseus transverse
head of adductor pollicis
flexor pollicis longus

thuri
palmar interossei flexor
digitorum superficial

flexor carpi ulnaris abductor
digiti minimi pisohamate
ligament flexor digiti minimi
hook of hamate
pisometacarpal ligament
opponens digiti minimi

fourth palmar interosseous

abductor and flexor digi
minimi

third palmar inteross

index

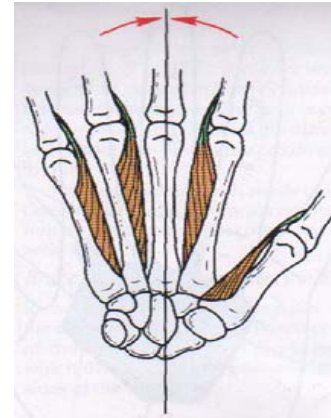
little

ring

Interossei muscles



dorsal interossei

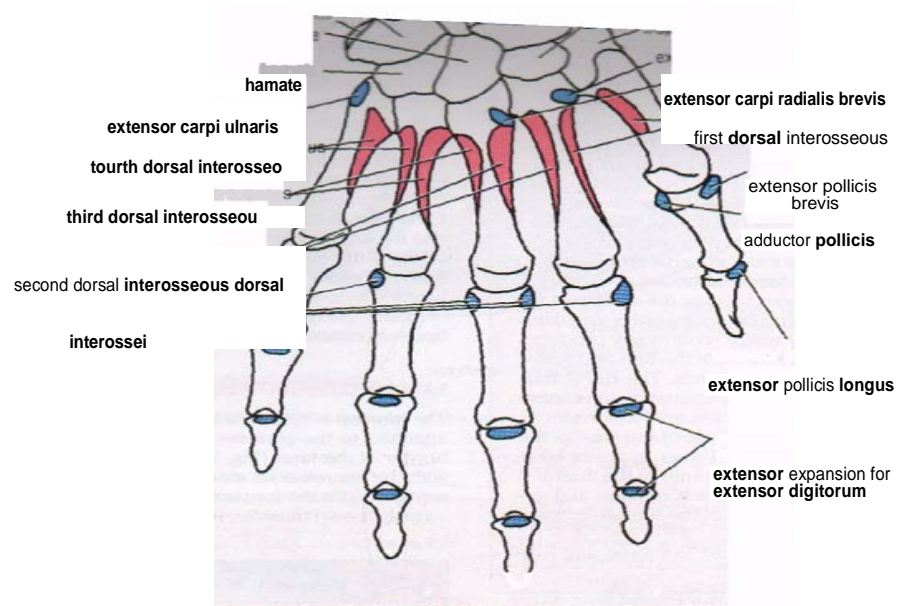


palmar interossei
interosseus

Figure 9-67 Origins and insertion of the palmar and the dorsal interossei muscles. The actions of these muscles are also shown.



Dorsal interossei



Important muscular attachments to the posterior surfaces of the bones of the hand.

The interossei muscles

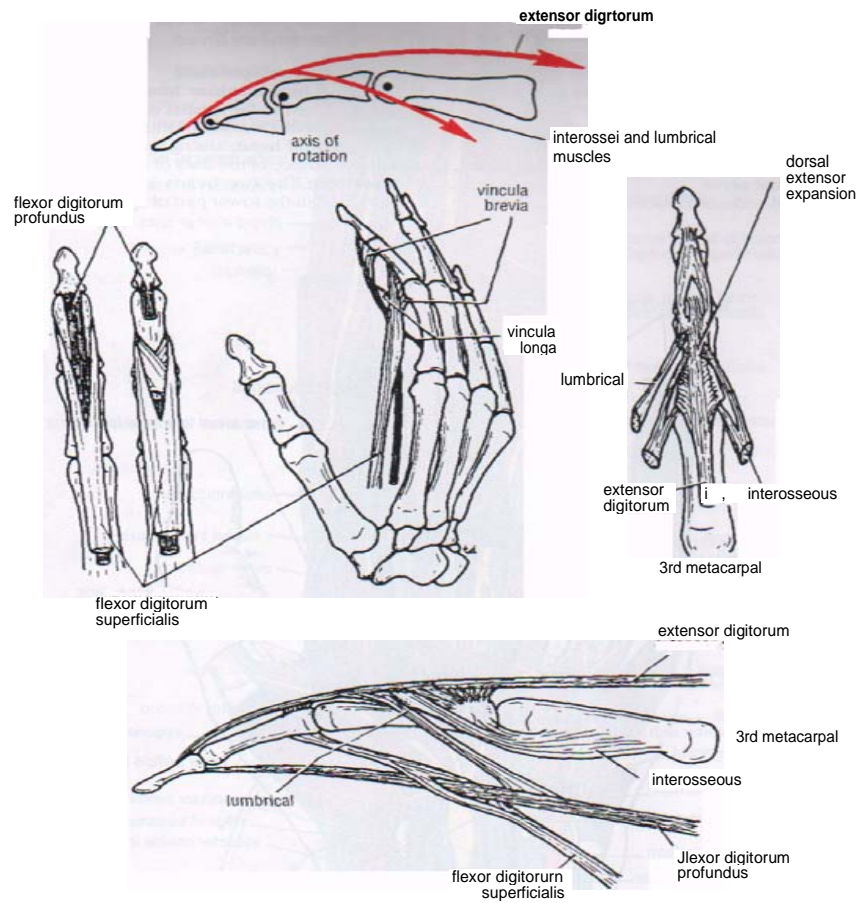
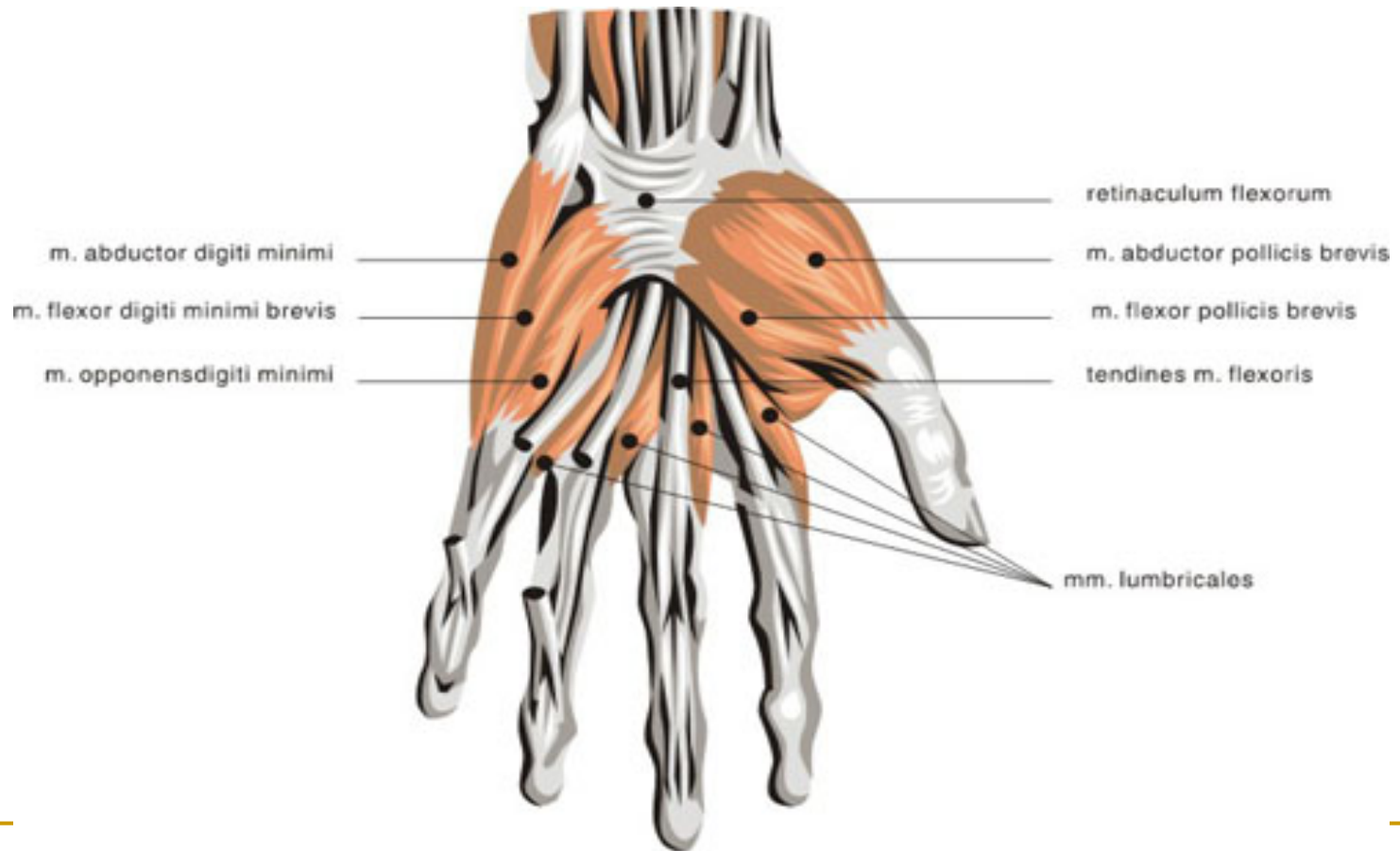


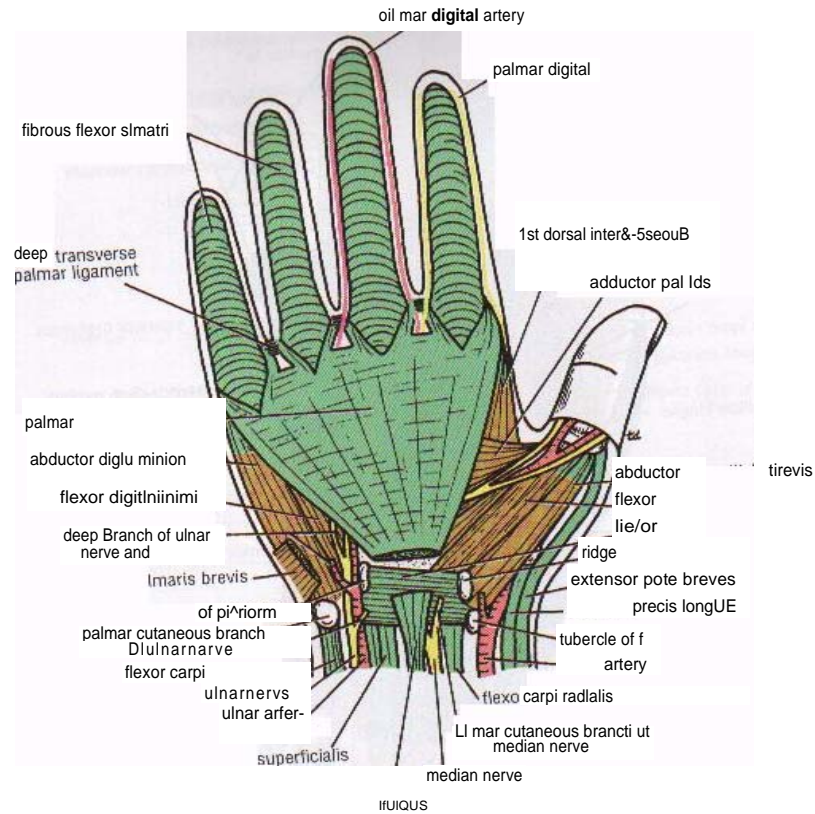
Figure 9-59 Insertions of long flexor and extensor tendons in the fingers. Insertions of the lumbrical and interossei muscles are also shown. The innervation of these muscles is also shown.

Short muscles of thumb



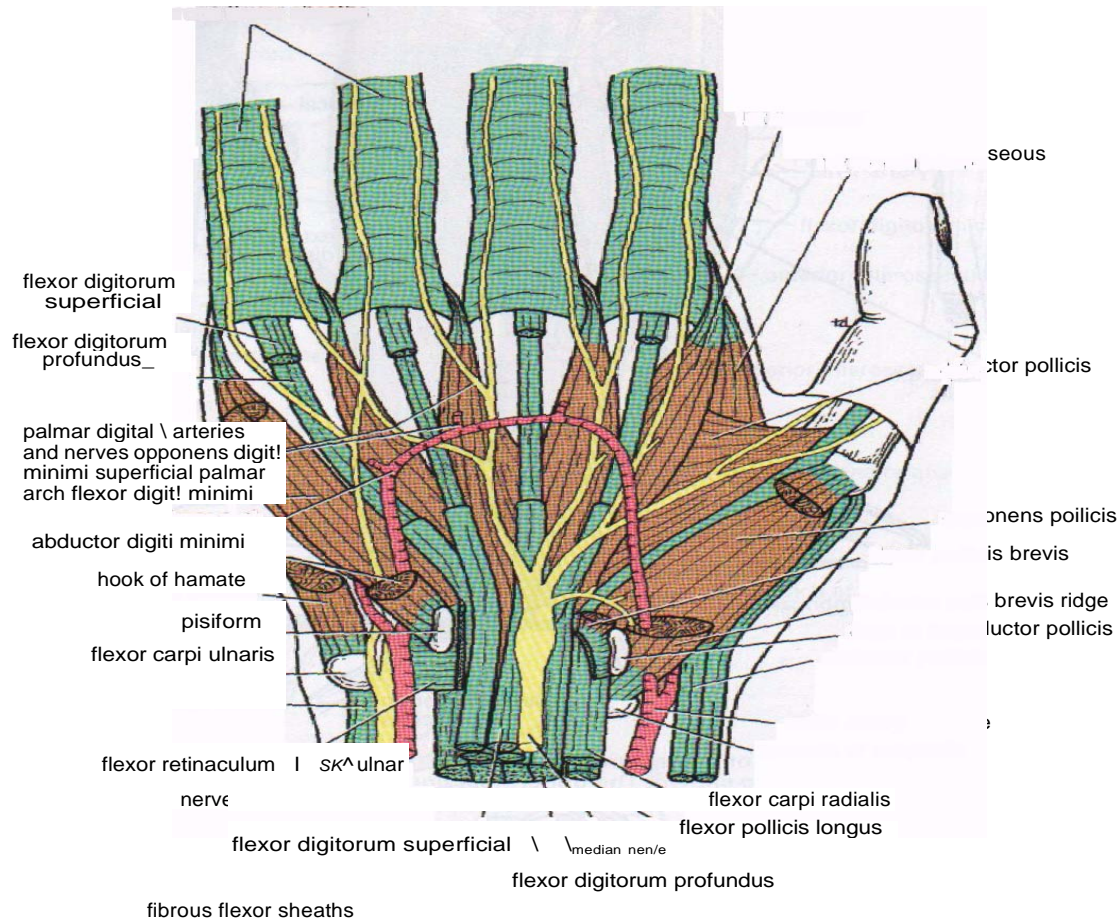
Abductor pollicis brevis

Flexor pollicis brevis



F.P.B

A.P.B



aponeurosis and the greater part of

Opponens pollicis

Adductor pollicis

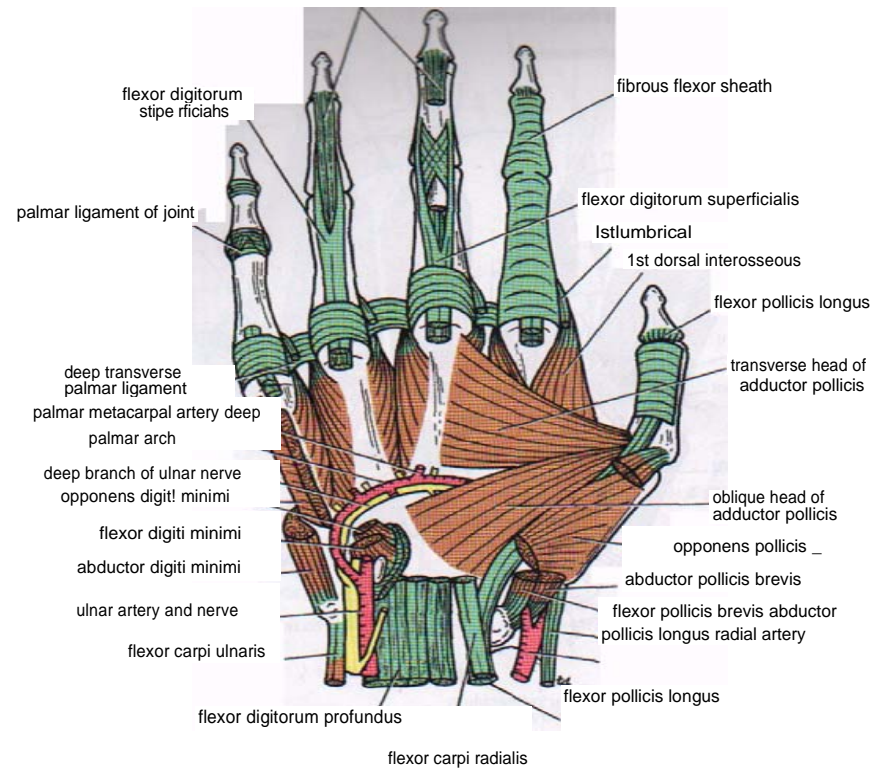


Figure 9-65 Anterior view of the palm of the hand. The long flexor tendons have been removed from the palm, but their method of insertion into the fingers is shown.

Insertion of short m. Of thumb

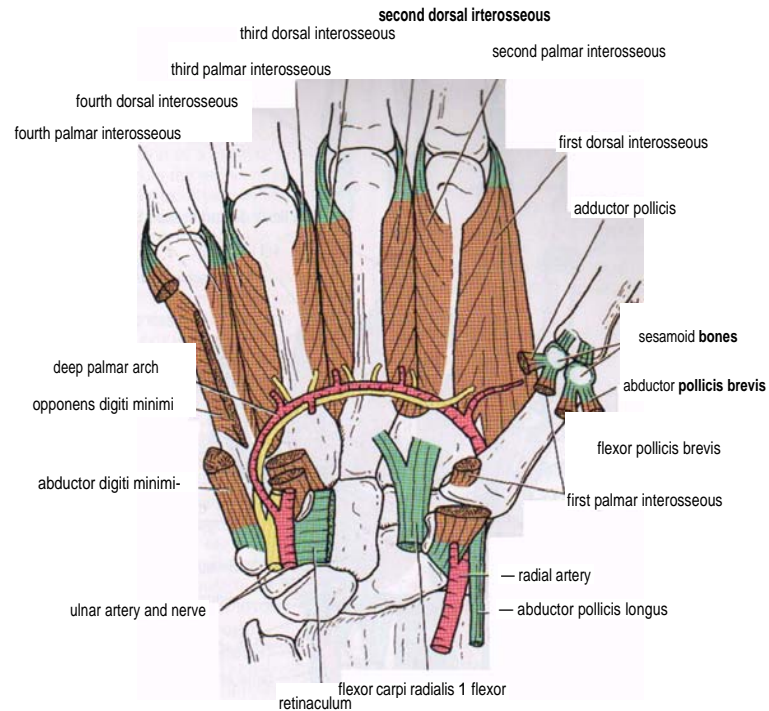
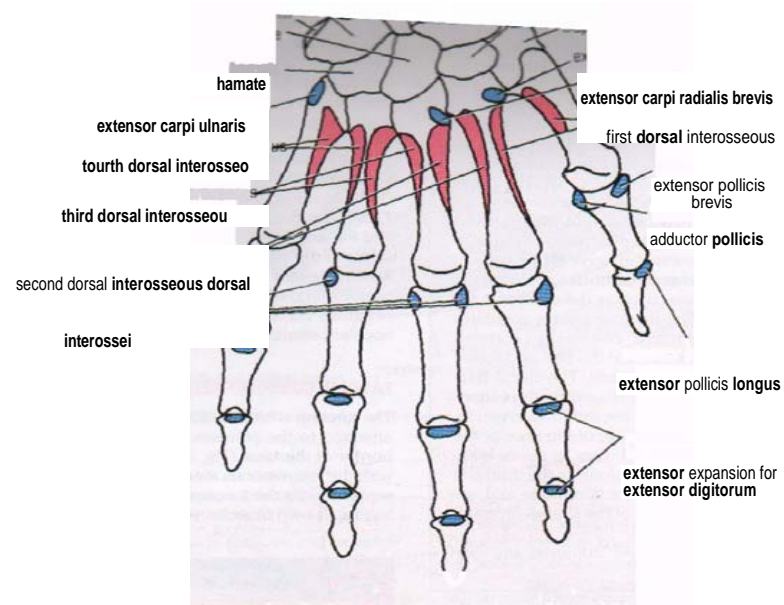


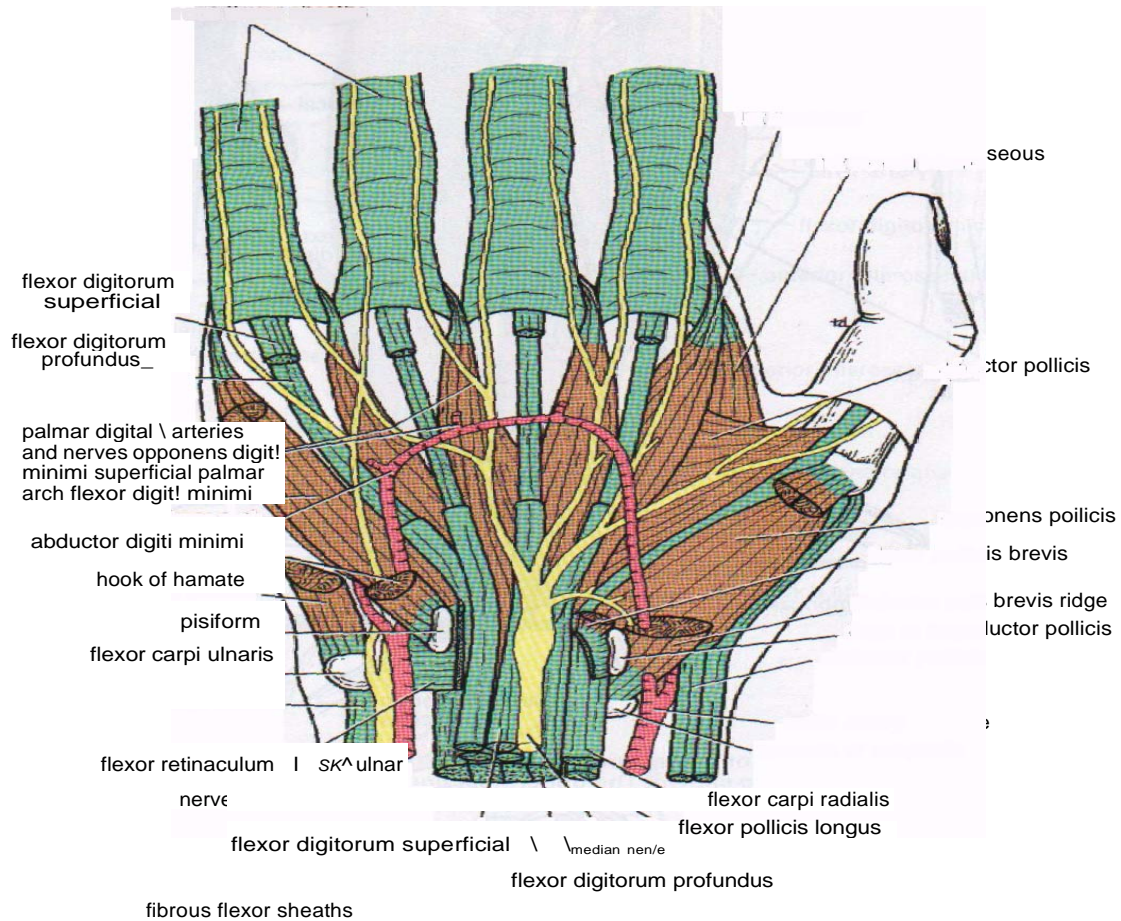
Figure 9-66 Anterior view of the palm of the hand showing the deep palmar arch and the deep terminal branch of the ulnar nerve. The interossei are also shown.

Short m. Of little finger



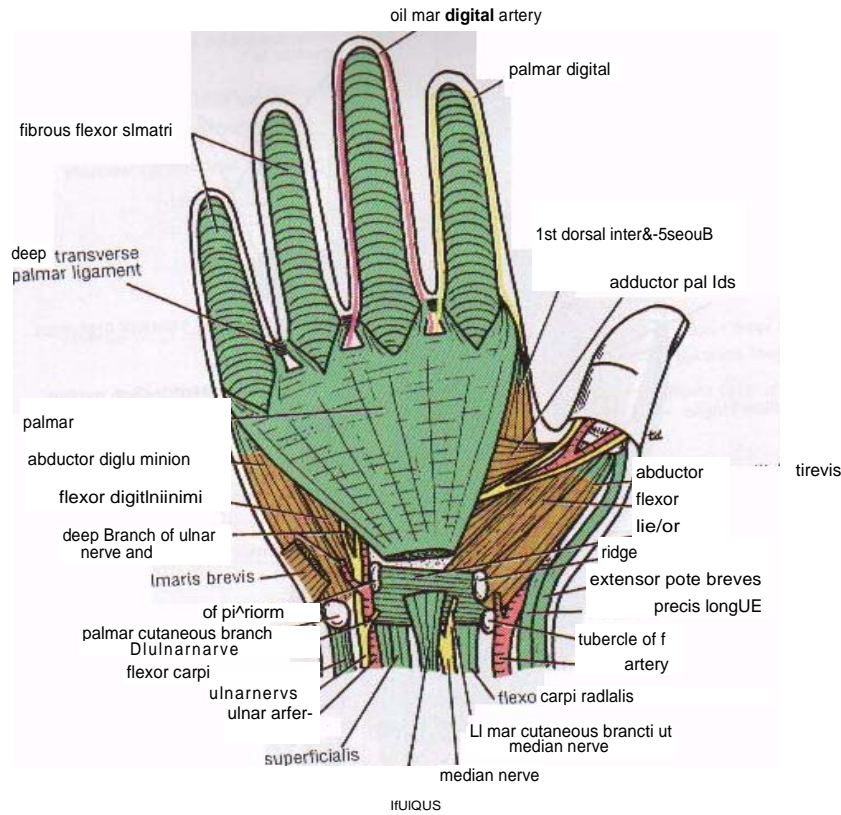
Important muscular attachments to the posterior surfaces of the bones of the hand.

Apponens digitiminimi

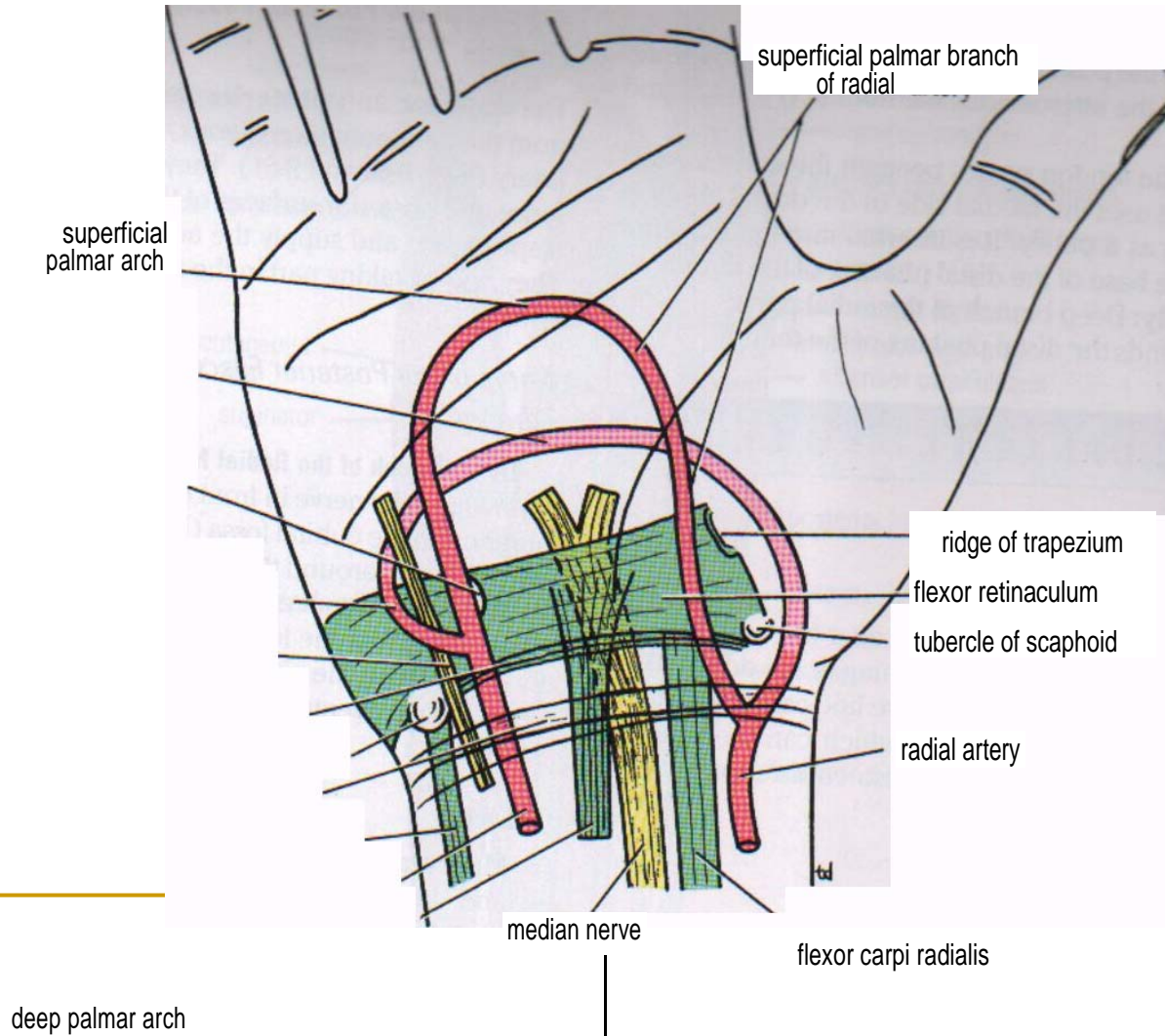


Flexor digiti minimi

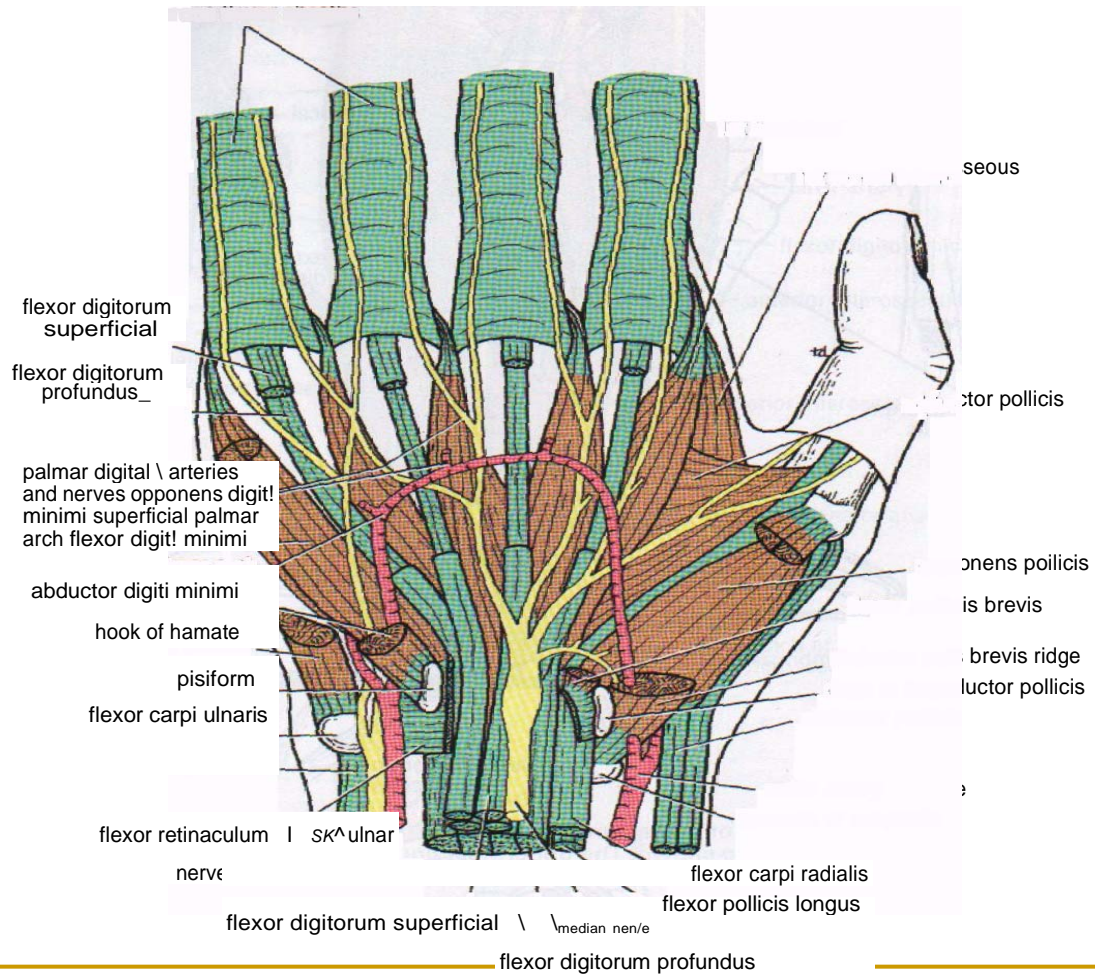
Abductor digiti minimi



Palmar arches



Ulnar artery



Deep palmar arch

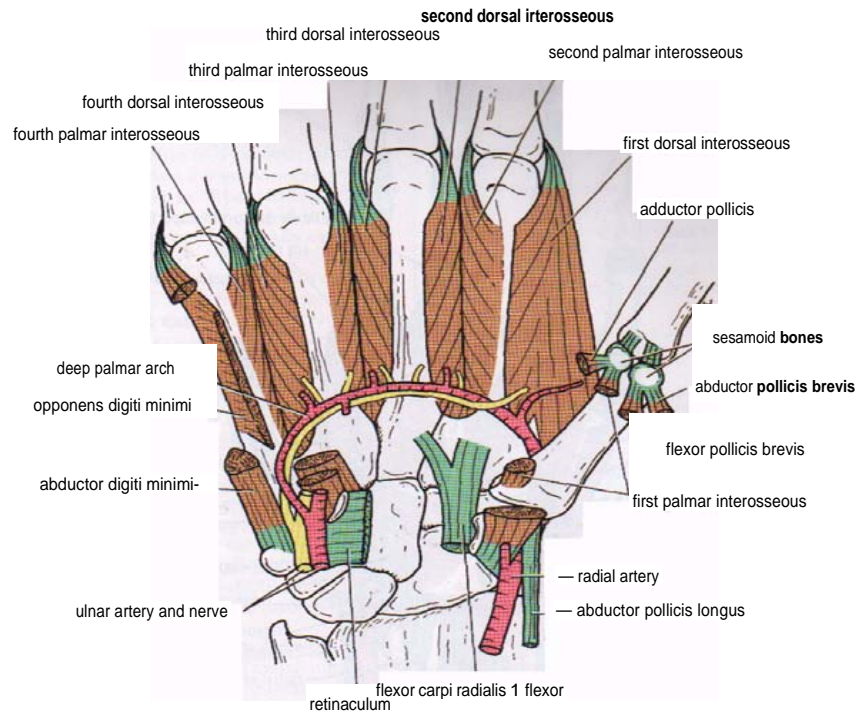


Figure 9-66 Anterior view of the palm of the hand showing the deep palmar arch and the deep terminal branch of the ulnar nerve. The interossei are also shown.

Radial artery

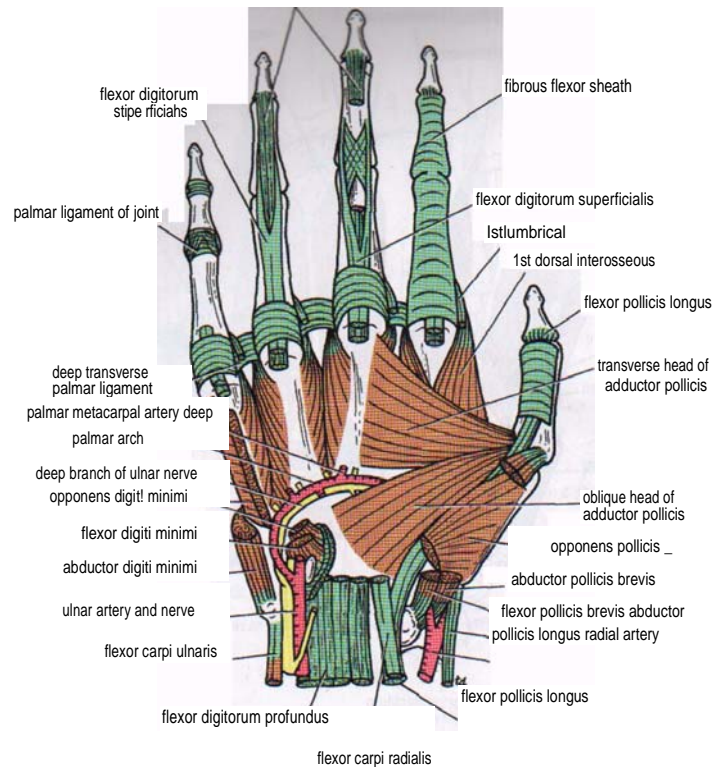


Figure 9-65 Anterior view of the palm of the hand. The long flexor tendons have been removed from the palm, but their method of insertion into the fingers is shown.

Radial artery

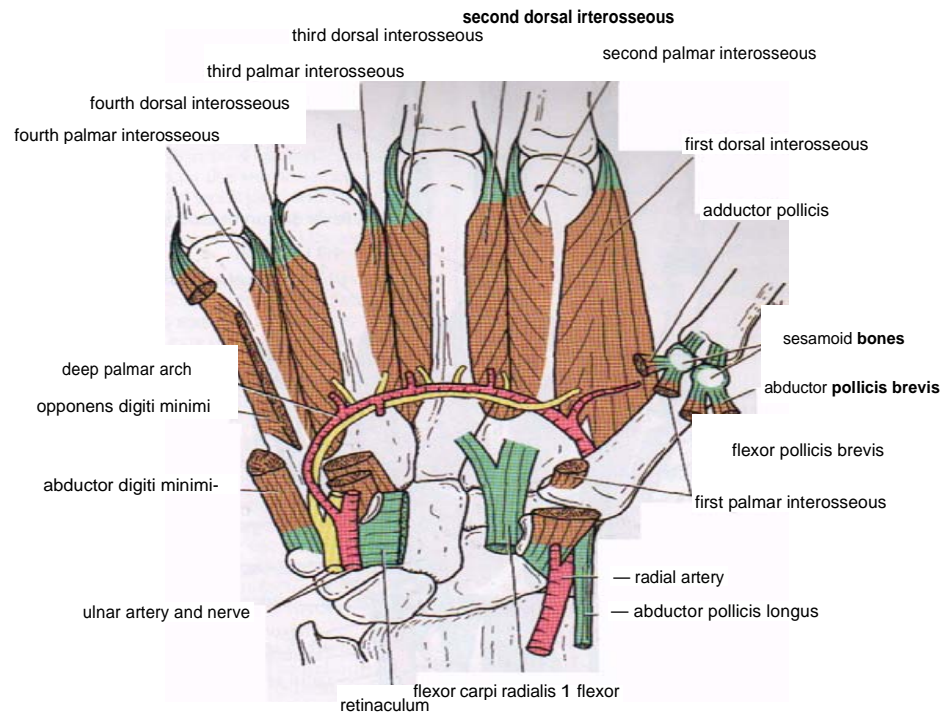
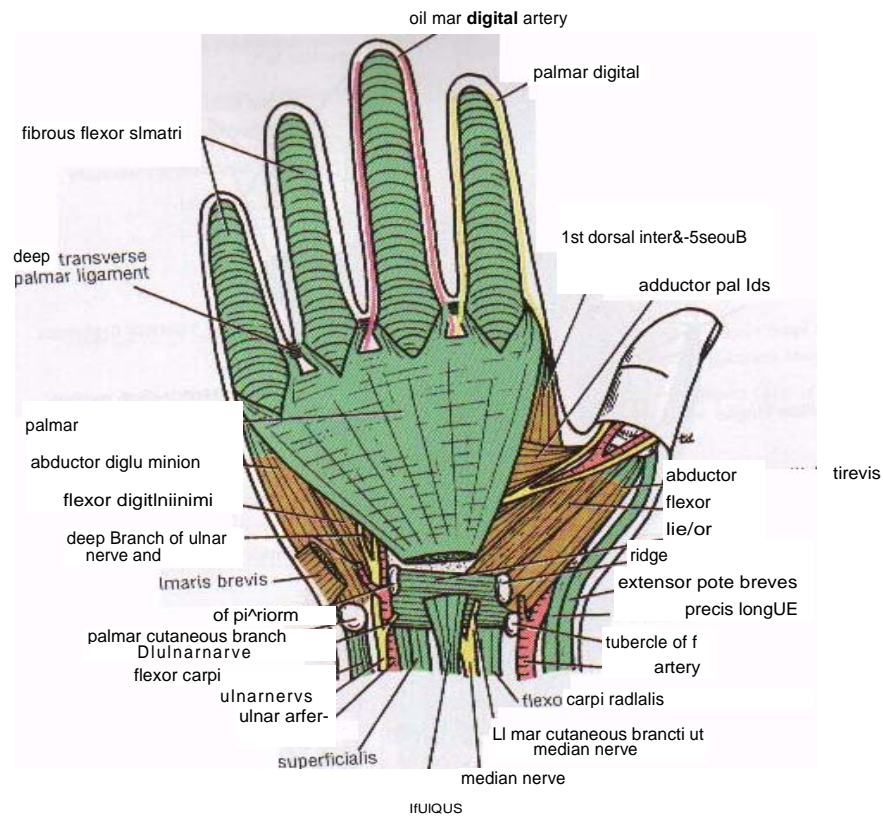
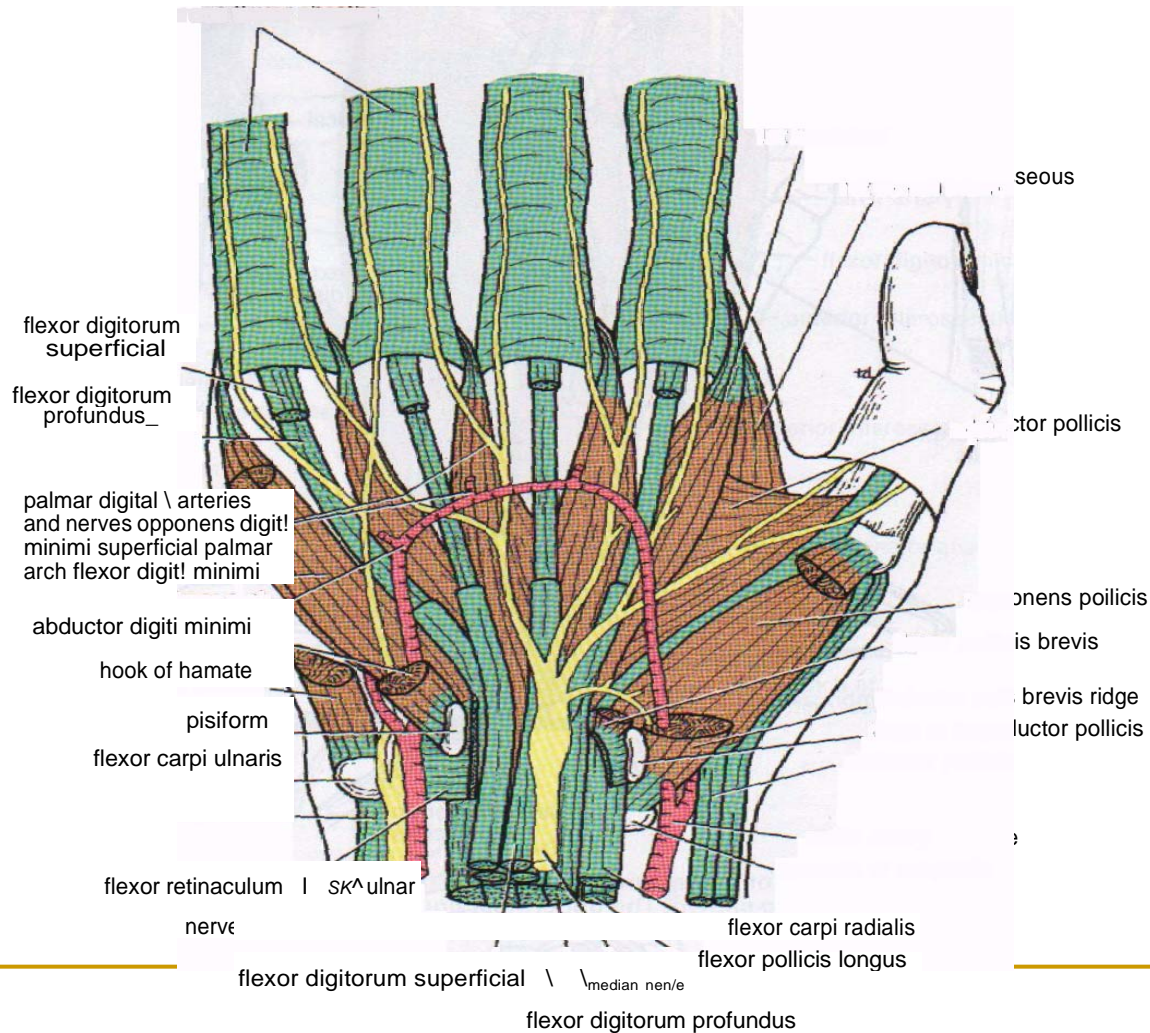


Figure 9-66 Anterior view of the palm of the hand showing the deep palmar arch and the deep terminal branch of the ulnar nerve. The interossei are also shown.

Median nerve



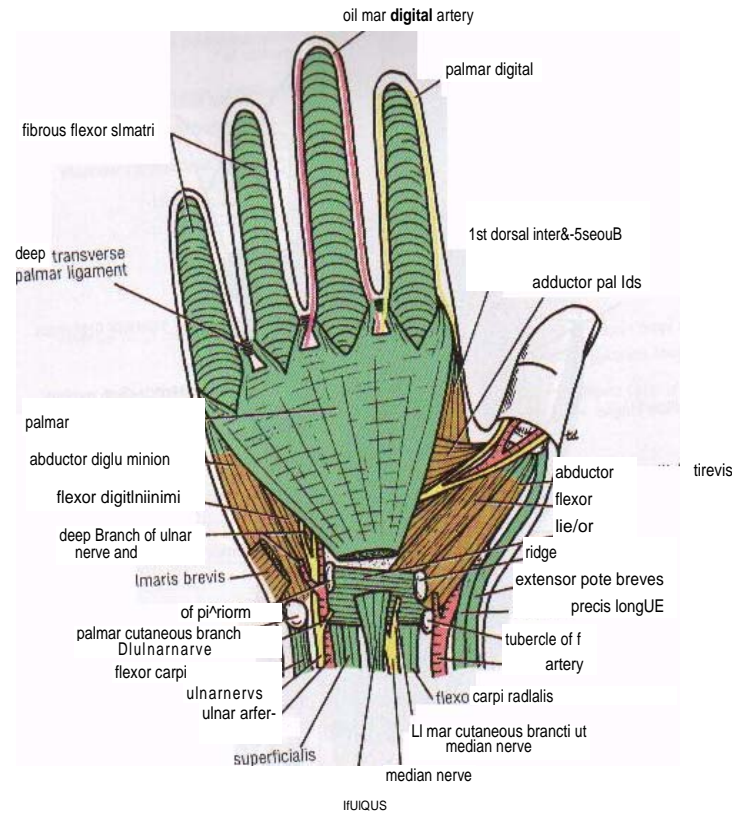
Median nerve



fibrous flexor sheaths

aponeurosis and the greater part of

Ulnar nerve



Ulnar nerve

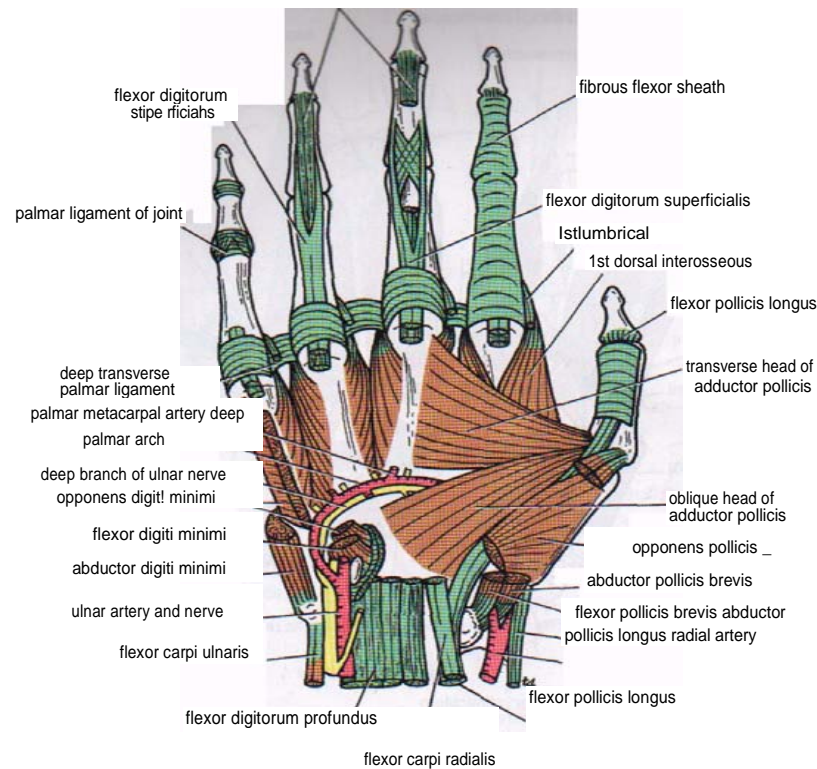
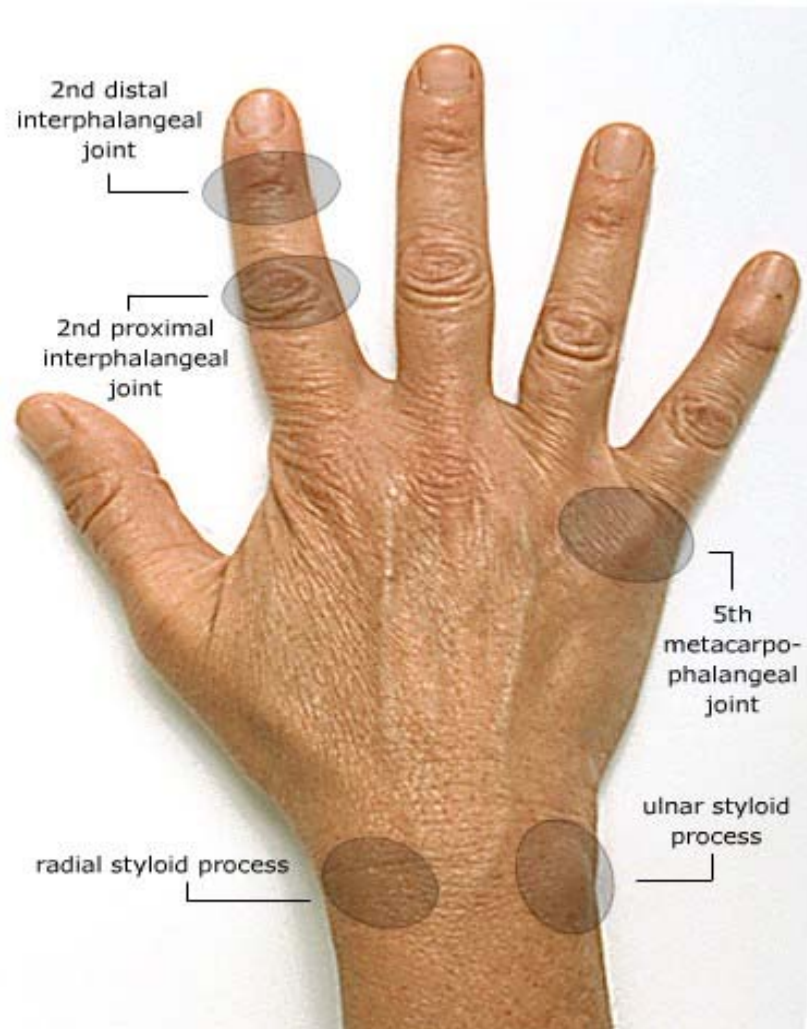
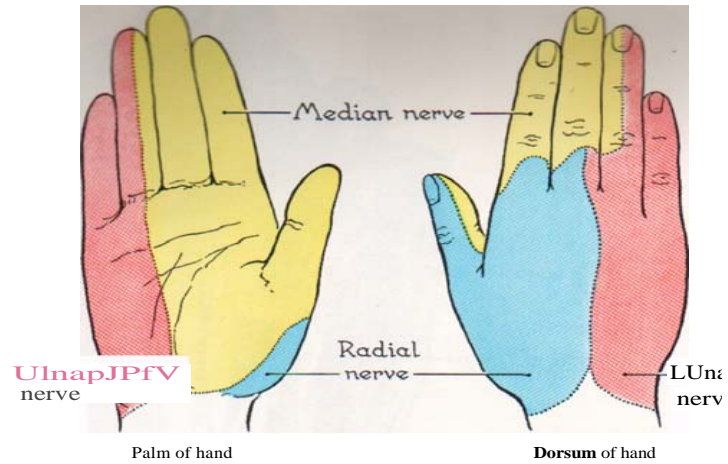


Figure 9-65 Anterior view of the palm of the hand. The long flexor tendons have been removed from the palm, but their method of insertion into the fingers is shown.

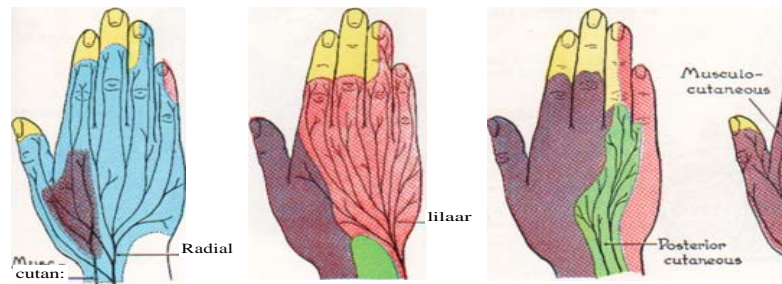
Dorsum of hand



Sensory nerves

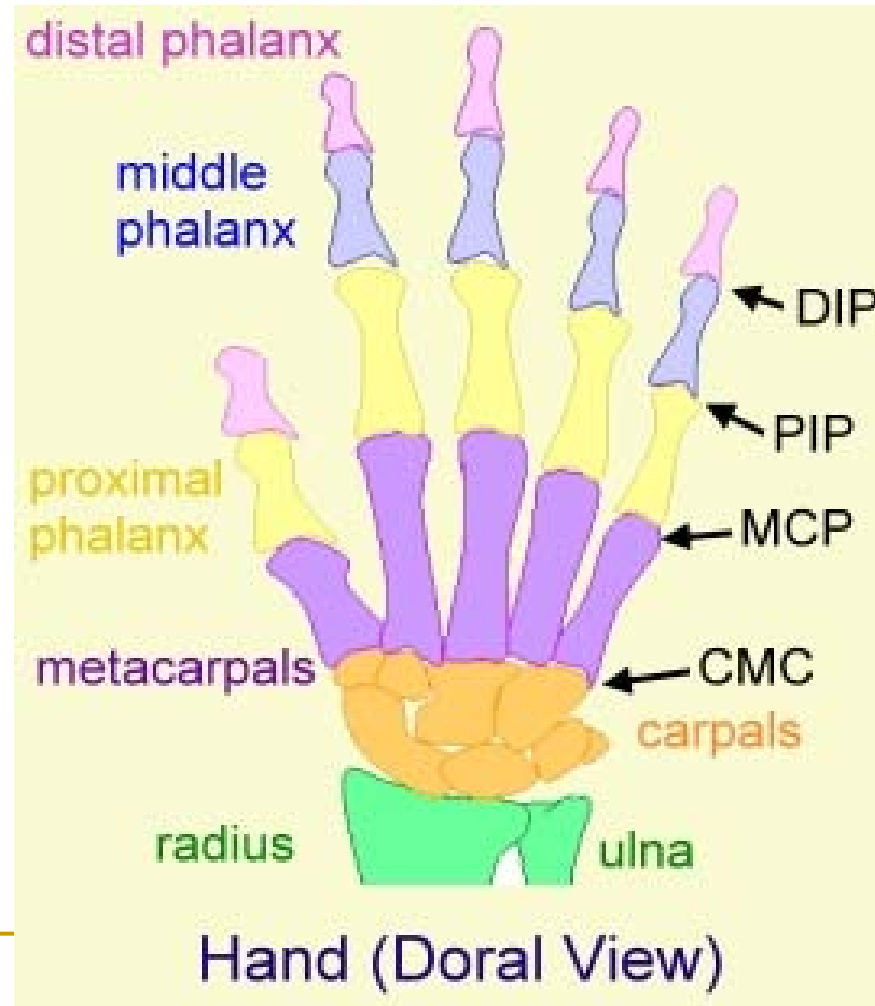


6-100 DISTRIBUTION OF CUTANEOUS NERVES TO PALM AND DORSUM OF THE HAND



6-101 VARIATIONS IN PATTERN OF CUTANEOUS NERVES IN THE DORSUM OF THE HAND

Joints of hand



Thank you





